



# Clemas & Co Ltd

Industrial Cleaning Equipment  
Sales - Hire - Service

## S9 SWEEPER PARTS MANUAL



**Clemas & Co.** Unit 5 Ashchurch Business Centre, Alexandra Way, Tewkesbury,  
Gloucestershire, GL20 8NB.

**Tel:** 01684 850777

**Fax:** 01684 850707

**Email:** [info@clemas.co.uk](mailto:info@clemas.co.uk)

**Web:** [www.clemas.co.uk](http://www.clemas.co.uk)

## Introduction

This manual is furnished with each new model. It provides necessary operation and maintenance instructions and replacement parts information.



**Read all instructions before using this machine.**

## Intended Use

This battery powered push sweeper is intended for commercial use, for example in buildings, warehouses, parking lots and sidewalks. It is designed for indoor and outdoor use and suitable for picking up dry, nonflammable dust and debris on dry hard floor and carpet surfaces. It is not suitable for wet surfaces or for picking up flammable or hazardous materials.

## General Information

This machine will provide excellent service. However, the best results will be obtained at minimum costs if:

- The machine is operated with reasonable care.
- The machine is maintained regularly - per the machine maintenance instructions provided.
- The machine is maintained with manufacturer-supplied or equivalent parts.



## Protect the Environment

Please dispose of packaging materials and used machine components in an environmentally safe way according to local waste disposal regulations.

Always remember to recycle.

## Machine Data

Please fill out at time of installation for future reference.

Model No. - \_\_\_\_\_

Serial No. - \_\_\_\_\_

Installation Date - \_\_\_\_\_

## EC Declaration of Conformity

Machine Type: Sweeper Walk behind

Model: S9



This machine is in conformity with the following EU directives:

- Machinery Directive: 2006/42/EC
- Electro Magnetic Compatibility Directive: 2004/108/EC
- Outdoor Use Noise Emission Directive: 2000/14/CE

**Applied harmonized standards:** EN ISO 14121--1, EN 1037, EN 60335--1, EN 60204--1, EN ISO 13849--1, EN ISO 13849--2, EN 60529, EN ISO 4413, EN 55012, EN 61000--6--2, EN ISO 11201, EN ISO 4871, EN ISO 3744, EN ISO 13059, EN ISO 3450, EN 60335--2--72.

## TENNANT Europe Uden

Industrielaan 6 5405 AB  
P.O. Box 6 5400 AA  
Uden -- The Netherlands  
Uden, 02/04/2012

Mark Morrison  
Director of International Operations

## IMPORTANT SAFETY INSTRUCTIONS (SAVE THESE INSTRUCTIONS)



This symbol warns the operator of hazards and unsafe practices which could result in severe personal injury or death.



**WARNING: To Reduce the Risk of Fire, Explosion, Electric Shock, or Injury:**

- Do not use near flammable liquids, vapors or combustible dusts.

The machine is not equipped with explosion proof motors. The electric motors will spark upon start up and during operation which could cause a flash fire or explosion if machine is used in an area where flammable vapors/liquids or combustible dusts are present.

- Do Not Pick Up Flammable or Toxic Materials and Burning Debris.
- Batteries Emit Hydrogen gas. Keep Sparks and Open Flame Away When Charging Batteries.
- Charge batteries in a well ventilated area.
- Disconnect Battery Cable and Charger Cord Before Servicing.
- Do Not Charge Batteries with Damaged Cord. Do Not Modify Plug.
- Do Not Use On Wet Surfaces. Store Indoors.

The following safety precautions signal potentially dangerous conditions to the operator or equipment.

## FOR SAFETY:

### 1. Do not operate machine:

- Unless trained and authorized.
- Unless operator manual is read and understood.
- Unless mentally and physically capable of following machine instructions.
- In areas that are too dark to safely see the controls or operate the machine.
- If not in proper operating condition.
- Without hopper and/or filter in place.

### 2. Before operating machine:

- Make sure all safety devices are in place and operate properly.

### 3. When operating machine:

- Use only as described in manual.
- Do not pick up objects such as cords, strings, wires that may entangle brush.
- Report machine damage or faulty operation immediately.
- Do not leave unattended or on an unlevel surface.
- Do not allow children to play on or around machine.
- Keep children and unauthorized persons away from machine when in use.
- Go slow on slippery surfaces.
- Do not operate on inclines that exceed 2 %.
- Do not use machine to transport people or objects.
- Wear a dust mask, protective glasses and gloves in dusty environments.

## TENNANT N.V.

Industrielaan 6 5405 AB  
P.O. Box 6 5400 AA, Uden-The Netherlands  
Europe@tenantco.com www.tenantco.com  
Original Instructions. Copyright © 2012 TENNANT Company.  
All rights reserved. Printed in Germany.  
Specifications and parts are subject to change without notice.

- Keep hands away from spinning brush.
  - Use caution when lifting full hopper to avoid back strain.
  - Wear heavy gloves when removing sharp objects from hopper.
  - Turn machine power off if brush becomes obstructed or machine malfunctions.
4. Before leaving or servicing machine:
- Stop on level surface.
  - Turn machine power off and remove key.
5. When servicing machine:
- Turn machine power off and remove key.
  - Disconnect battery cable and charger cord before working on machine.
  - Wear protective gloves and glasses when handling batteries or battery cables.
  - Avoid contact with battery acid.
  - Use manufacturer supplied or approved replacement parts.
  - All repairs must be performed by a qualified service person.
  - Avoid moving parts. Do not wear loose clothing or jewelry and secure long hair.
  - Do not power spray or hose off machine near electrical components.
  - Do not modify the machine from its original design.
  - Drive wheels off ground during test after drive belt adjustment.
  - All work must be done having enough visibility and/or appropriate lighting.
  - Wear personal protective equipment as needed.
6. When transporting machine:
- Turn machine power off and remove key.
  - Get assistance when lifting machine.
  - Use a loading ramp that will support the weight of the machine.
  - Do not wheel up or down stairs.
  - Use tie-down straps to secure machine when transporting by vehicle.

### Onboard Battery Charger Information

The onboard battery charger's charging profile is specifically configured for a 12V sealed GEL battery. When installing a replacement battery it is important to use the same battery type or damage to the battery and/or charger may result.

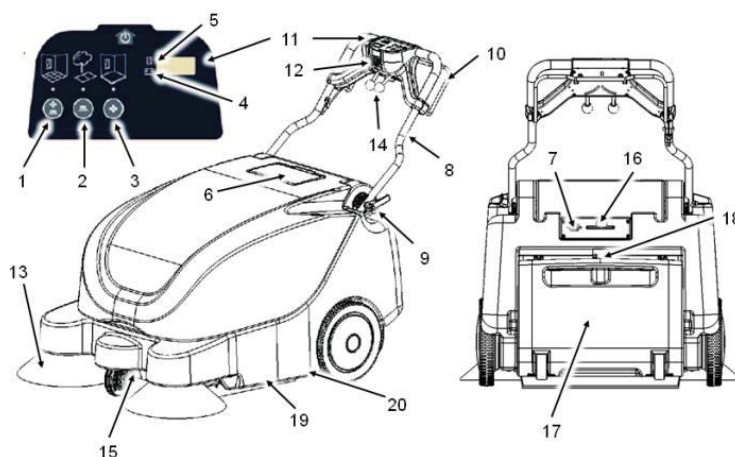
For battery charger operating instructions, refer to the battery charger manual supplied with the machine.

### Technical Specifications

Model	S9
Length	1085 mm / 43 in
Width	799 mm / 31 in
Height	658 mm / 26 in
Weight	137 kg / 300 lb
Sweeping Path Width	900 mm / 35 in
Main Brush Width	500 mm / 20 in
Side Brush Diameter	354 mm / 14 in
Hopper Capacity	60 L / 15.9 Gal
Battery Capacity	12 V, 105 Ah (C5), 120Ah (C20)
Total Power Consumption	12 VDC, 590 W, 34.3 A
Battery Charger	100-240VAC 10A
Run Time (Max.)	3 Hr.
Productivity Rate (Net)	3150 m <sup>2</sup> /hr / 23620 ft <sup>2</sup> /hr
Slope Maximum	2%
Machine Vibration at Hand-arm *	<2.5m/s <sup>2</sup>
Machine Vibration Uncertainty K *	0.8 m/s <sup>2</sup>
Sound Pressure Level L <sub>pA</sub> *	62 dBA
Sound Uncertainty K <sub>pA</sub> *	3 dBA
Sound Power Level L <sub>WA</sub> + Uncertainty K <sub>WA</sub> *	81 dB(A)
Protection Grade	IPX3
Operation Temperature	min. -15°C, max. 40°C

\* Values determined as per EN 60335-2-72

### Machine Components



1. Vacuum, Side Brush, Main Brush Start Button
2. Side Brush, Main Brush Start Button
3. Vacuum, Main Brush Start Button
4. Battery Discharge Indicator
5. Hour Meter
6. Battery Charger Cord Storage Compartment
7. Battery Charger Outlet
8. Adjustable Control Handle
9. Adjustable Control Handle Lever
10. Drive Lever
11. Control Panel
12. Main Power Key Switch
13. Side Brush
14. Side Brush Lever
15. Internal Access Knob
16. Filter Shaker
17. Debris Hopper
18. Debris Hopper Release Lever
19. Dual Main Brushes
20. Anti-static Chain

Fig. 1 – Wheel and Caster Assy

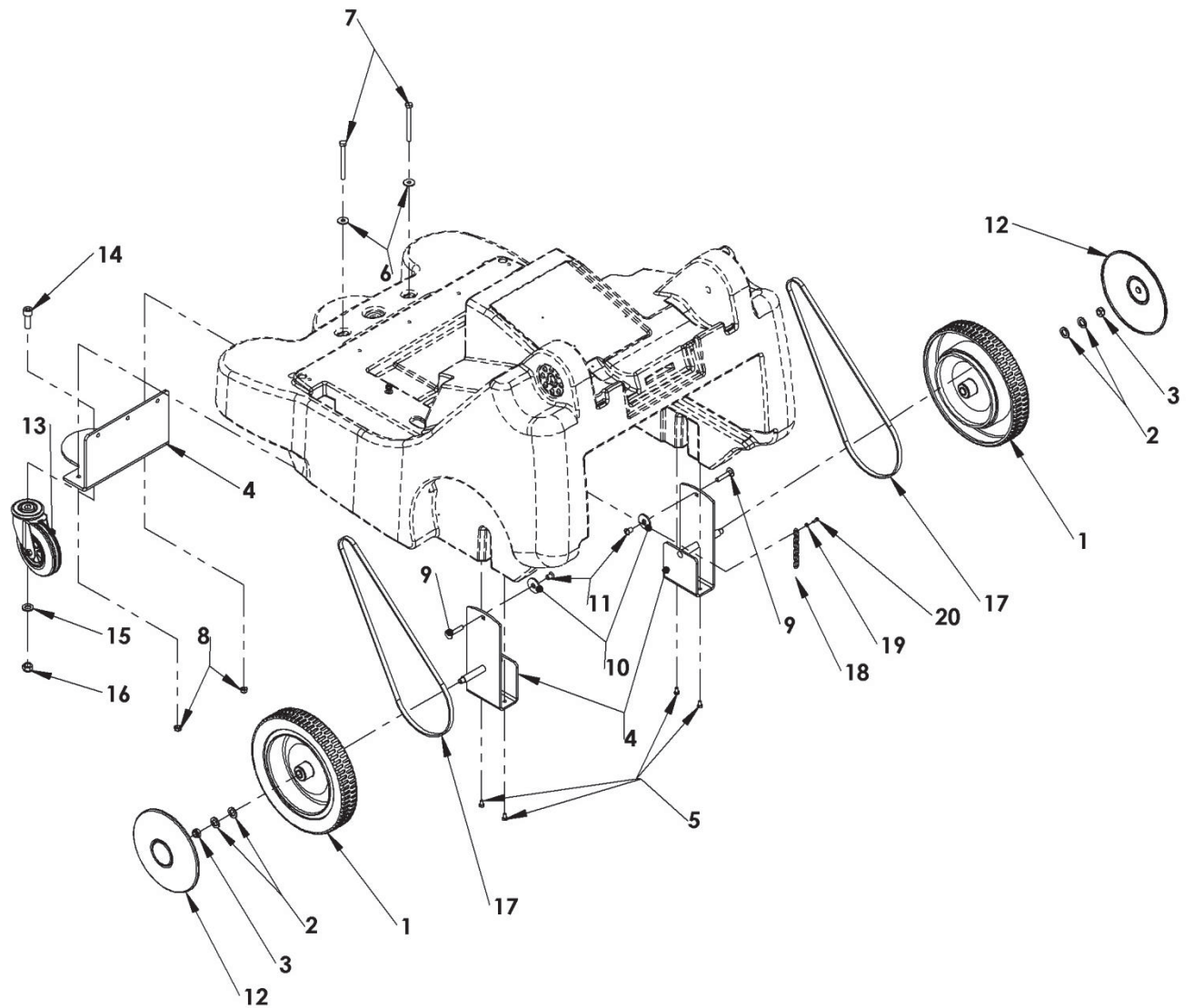


Fig. 1 – Wheel and Caster Assy

Ref.	Part No.	Description	Qty.
▽	1	9010055 ● Wheel Kit (Includes Wheel Qty 1, Bearings Qty 2 & Mounting Hardware	2
▲	2	N/A Washer, Flat, M14	4
▲	3	N/A Nut, Hex, Lock, M10	2
▽	4	9010080 Wheel MTG Kit (Includes Wheel bracket Qty 2, Caster Bracket Qty1 & Mounting Hardware)	1
▲	5	N/A Screw, Soc, M6x1x10	4
▲	6	N/A Washer, Flat, M8x20	2
▲	7	N/A Screw, Hex, M8x1.25x90	2
▲	8	N/A Nut, Hex, Lock, M8	2
▲	9	N/A Bolt Carriage M8x1.25x40	2
▲	10	N/A Washer, Flat 8.4x34x2.5	2
▲	11	N/A Sleeve Nut M8	2
	12	9010057 ● Hub Cap Kit Teal (Includes Hub Cap Teal Qty 2)	1
▽	13	9010059 ● Caster Kit (Includes Caster Qty 1 & Mounting Hardware)	1
▲	14	N/A Screw, Soc, M12x1.75x35	1
▲	15	N/A Washer, Flat, M12	1
▲	16	N/A Nut, Hex, Lock, M12	1
	17	9010076 ● Belt Kit Propel (Includes V-Belt Qty1 & Toothed Belt Qty2)	1
▽	18	9009647 ● Strap Kit, Static ( Includes Static Strap & Mounting Hardware)	1
▲	19	N/A Washer, flat M4	1
▲	20	N/A Screw, Pan, 3.9x13 TCUT	1

▽ ASSEMBLY

▲ INCLUDED IN ASSEMBLY

● RECOMMENDED STOCK ITEM

N/A Not Available Separately. Local Purchase.



Fig. 2 – Wheel and Main Brush Drive

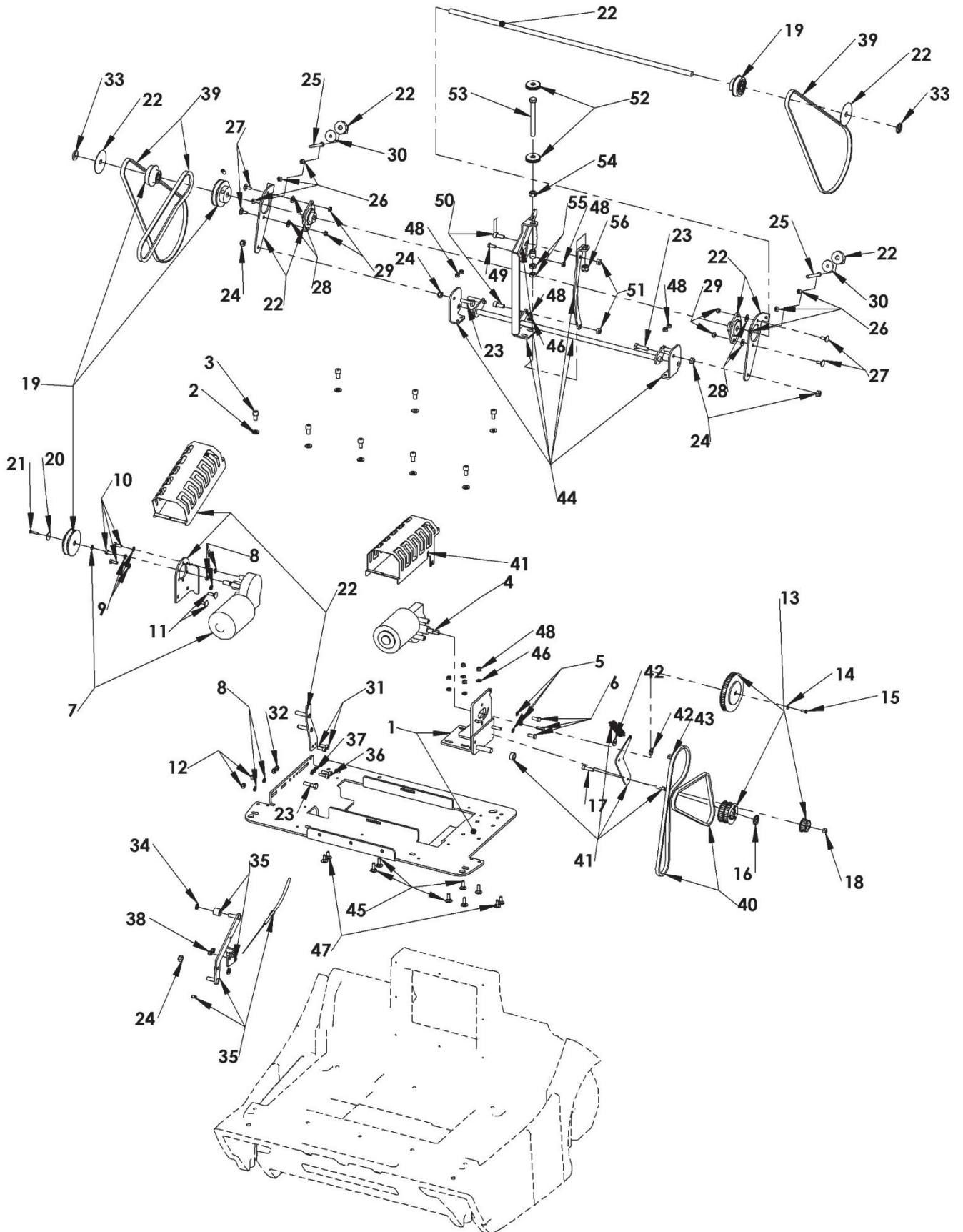


Fig. 2 – Wheel and Main Brush Drive

	Ref.	Part No.	Description	Qty.
▽	1	9010168	Bracket Kit Battery and Fan (Includes Battery Bracket Qty 1, Motor Bracket Qty 1, Fan Bracket Qty 1, Shaker Bracket Qty 1 & Mounting Hardware)	1
▲	2	N/A	Washer, flat, M8x17	8
▲	3	N/A	Screw, Soc, M8x1.25x16	8
▽	4	9010066	● Motor Kit Main Brush ( Includes Main Brush Motor Qty1, Motor Guard Qty1 & Mounting Hardware)	1
▲	5	N/A	Washer, Lock, M6	3
▲	6	N/A	Screw, Lock, M6x1x16	3
▽	7	9010017	● Propel Motor Kit (Includes Propel Motor Qty 1, & Mounting Hardware)	1
▲	8	N/A	Washer, Flat, M6	5
▲	9	N/A	Washer, Lock, M6	3
▲	10	N/A	Screw, Hex, M6x1x16	3
▲	11	N/A	Bolt carriage M6x1x20	2
▲	12	N/A	Nut, Hex, Lock M6	2
▽	13	9010165	Pulley Kit, Main Brush(Includes Pulley Z60 Qty 1, Pulley Z20 Qty1, Double Pulley Z32 Qty1, Pulley Z32 Qty2, Bushing Qty1 & Mounting Hardware)	1
▲	14	N/A	Washer, Flat, M4	1
▲	15	N/A	Screw, Hex, M4x0.7x12	1
▲	16	N/A	Retainment Ring 12	1
▲	17	N/A	Screw, Soc, M6x1x24	1
▲	18	N/A	Nut, Hex, Lock M6	1
▽	19	9010178	Pulley Kit Propel (Includes Motor Pulley Qty1, Pulley Qty1, Pulley Z32 lh Qty1, Pulley Z32 rh Qty1, Washer d60 Qty2 & Mounting Hardware)	1
▲	20	N/A	Washer, Flat, M4x20	1
▲	21	N/A	Screw, Hex, M4x0.7x20	1
▽	22	9010179	Propel Tensioning Kit (Includes Drive Shaft Qty1, Bracket lh Qty1, Bracket rh Qty1, Bearings Qty2, Clutch Lever Qty1, Motor Bracket Qty1, Motor Guard Qty1, Bushing Qty2, Washer D=60 Qty2 & Mounting Hardware)	1
▲	23	N/A	Screw, Hex, M8x1.25x30	3
▲	24	N/A	Nut, Hex, Lock M8	5
▲	25	N/A	Screw, Hex, M6x1x65	2
▲	26	N/A	Nut, Hex, Std M6	6
▲	27	N/A	Bolt carriage M6x1x16	4
▲	28	N/A	Washer, Flat, M8	4
▲	29	N/A	Nut, Hex, Lock M6	4
▲	30	N/A	Washer, Flat, M6x30	2
▲	31	N/A	Screw, Soc, M6x1x16	2
▲	32	N/A	Nut, Hex, Lock M6	2
▲	33	N/A	Retainment Ring 12	2
▲	34	N/A	Retainment Ring 8	1
▽	35	9010175	● Propel Bail and Cable (Includes Bail Qty1, Clutch Cable Qty1, Cable Bracket Qty2 & Mounting Hardware)	1
▲	36	N/A	Screw, Soc, M6x1x20	2
▲	37	N/A	Washer, Flat, M6	2
▲	38	N/A	Nut, Hex, Lock M6	2

▽ ASSEMBLY

▲ INCLUDED IN ASSEMBLY

● RECOMMENDED STOCK ITEM

N/A Not Available Separately. Local Purchase.

**Fig. 2 – Wheel and Main Brush Drive**

Ref.	Part No.	Description	Qty.
39	9010076	● Belt Kit Propel ( Includes V-Belt Qty1, Timing Belt Qty2)	1
40	9010078	● Belt Kit Main Brush (Includes Double Timing Belt Qty 1 & Timing Belt Qty1)	1
▽	41	9010166 Tensioning Arm Kit, Main Brush (Includes Lever Qty 1, Motor Guard Qty1, Spring Qty 1 & Mounting Hardware)	1
▲	42	N/A Washer, Flat, M6x20	2
▲	43	N/A Nut, Hex, Lock M6	1
▽	44	9010167 Adjuster Kit Rear Brush (Includes Axle Qty1, Adjuster Bracket Qty1, Lever Qty1, Pointer Qty1, Fixing Bracket lh Qty1, Fixing Bracket rh Qty1, Flange Bracket Qty2, Lever Qty2 & Mounting Hardware)	1
▲	45	N/A Bolt carriage M6x1x20	6
▲	46	N/A Washer, Flat, M6	6
▲	47	N/A Bolt carriage M6x1x16	4
▲	48	N/A Nut, Hex, Lock, M6	9
▲	49	N/A Screw, Hex, M6x1x16	1
▲	50	N/A Screw, Soc, M8x1.25x20	2
▲	51	N/A Nut, Hex, Lock, M8	2
▽	52	9010011 ● Knob Kit (Includes Black Balls M8 Qty 2, Yellow Balls M8 Qty 1, Knurled Knob M10 Qty 2, Knurled Knob M6 Qty 1 & Mounting Material)	1
▲	53	N/A Screw, Hex, M10x1.5x100	1
▲	54	N/A Nut, Hex, Std, M10	1
▲	55	N/A Nut, Hex Jam, M10	2
▲	56	N/A Nut, Hex , Lock, M10	1

▽ ASSEMBLY

▲ INCLUDED IN ASSEMBLY

● RECOMMENDED STOCK ITEM

N/A Not Available Separately. Local Purchase.





Fig. 3 – Main Brush Assy

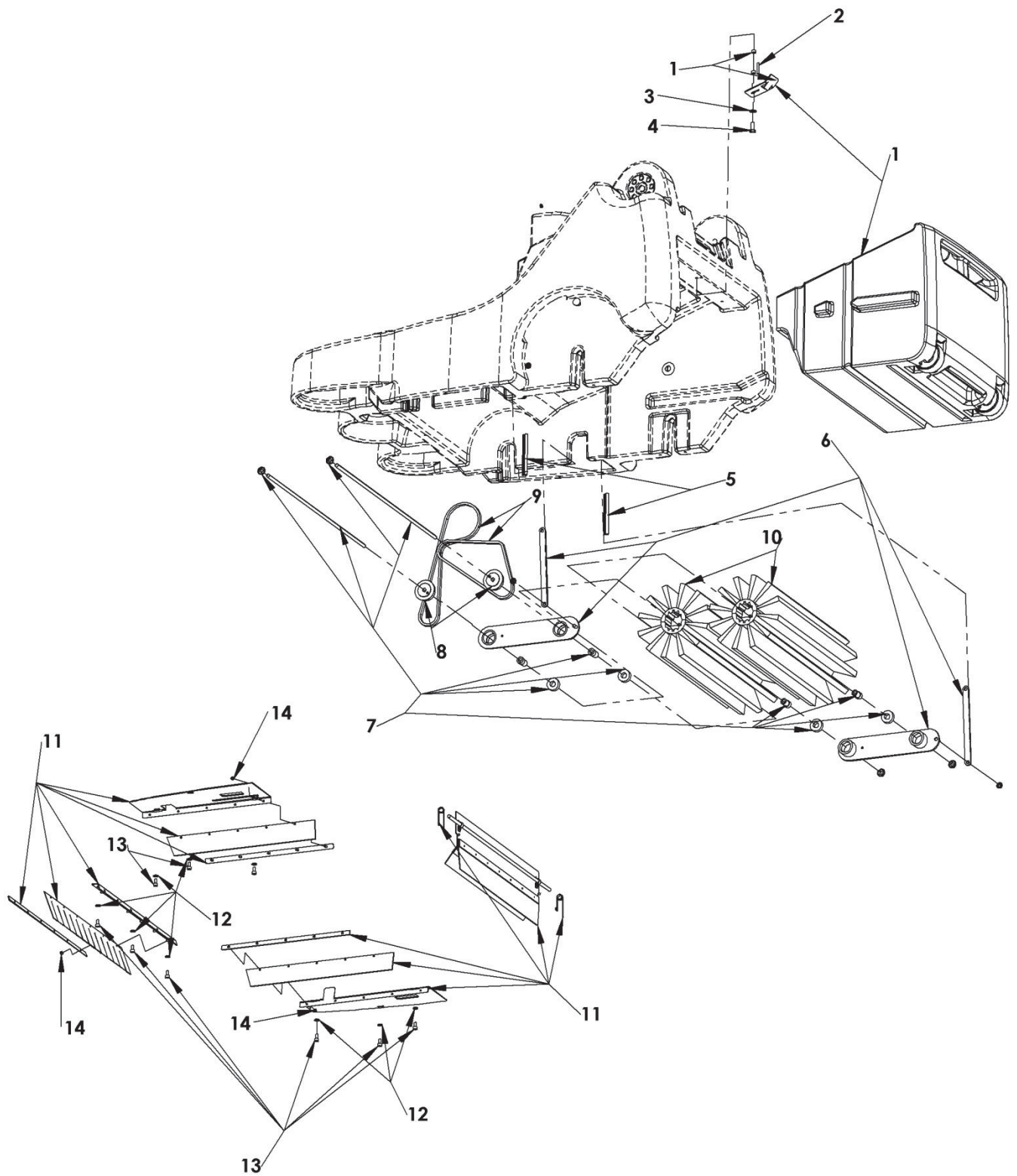


Fig. 3 – Main Brush Assy

Ref.	Part No.	Description	Qty.
▽	1	9010031 Hopper Kit (Includes Hopper Qty1, Wheels Qty2, Closing Bracket Qty1, Bushings Qty2 & Mounting Hardware)	1
▲	2	N/A Spiral Pin 8x30	1
▲	3	N/A Washer, Flat, M8	1
▲	4	N/A Screw, Hex, M8x1.25x20	1
▲	5	9010043 ● Hopper Seal Kit (Includes Hopper Seal Qty2)	1
	6	9010167 Adjuster Kit Rear Brush (Includes Axle Qty1, Adjuster Bracket Qty1, Lever Qty1, Pointer Qty1, Fixing Bracket lh Qty1, Fixing Bracket rh Qty1, Flange Bracket Qty2, Lever Qty2 & Mounting Hardware)	1
	7	9010176 Main Broom Axle Kit (Includes Axle Qty2, Bearing Qty4, Bearing Support Qty4 & Retainment Rings Qty4)	1
	8	9010165 Pulley Kit, Main Brush (Includes Pulley Z60 Qty 1, Pulley Z20 Qty1, Double Pulley Z32 Qty1, Pulley Z32 Qty2, Bushing Qty1 & Mounting Hardware)	1
	9	9010078 ● Belt Kit Main Brush (Includes Double Timing Belt Qty 1 & Timing Belt Qty1)	1
	10	9010036 ● Brush Kit (Includes Main Brush Halves Qty 2 & Mounting Hardware)	2
▽	11	9010038 ● Brush Flap Kit ( Includes Flaps Side Qty2, Front and Rear Qty2, Brackets Qty9, Axle Qty1, Spring Qty2, Clamp Qty2 & Mounting Hardware)	1
▲	12	N/A Washer, Flat, M6	9
▲	13	N/A Screw, Soc, M6x1x12	9
▲	14	N/A Nut, Hex, Lock, M4	16

▽ ASSEMBLY

▲ INCLUDED IN ASSEMBLY

● RECOMMENDED STOCK ITEM

N/A Not Available Separately. Local Purchase.

**Fig. 4 – Side Brush Assy**

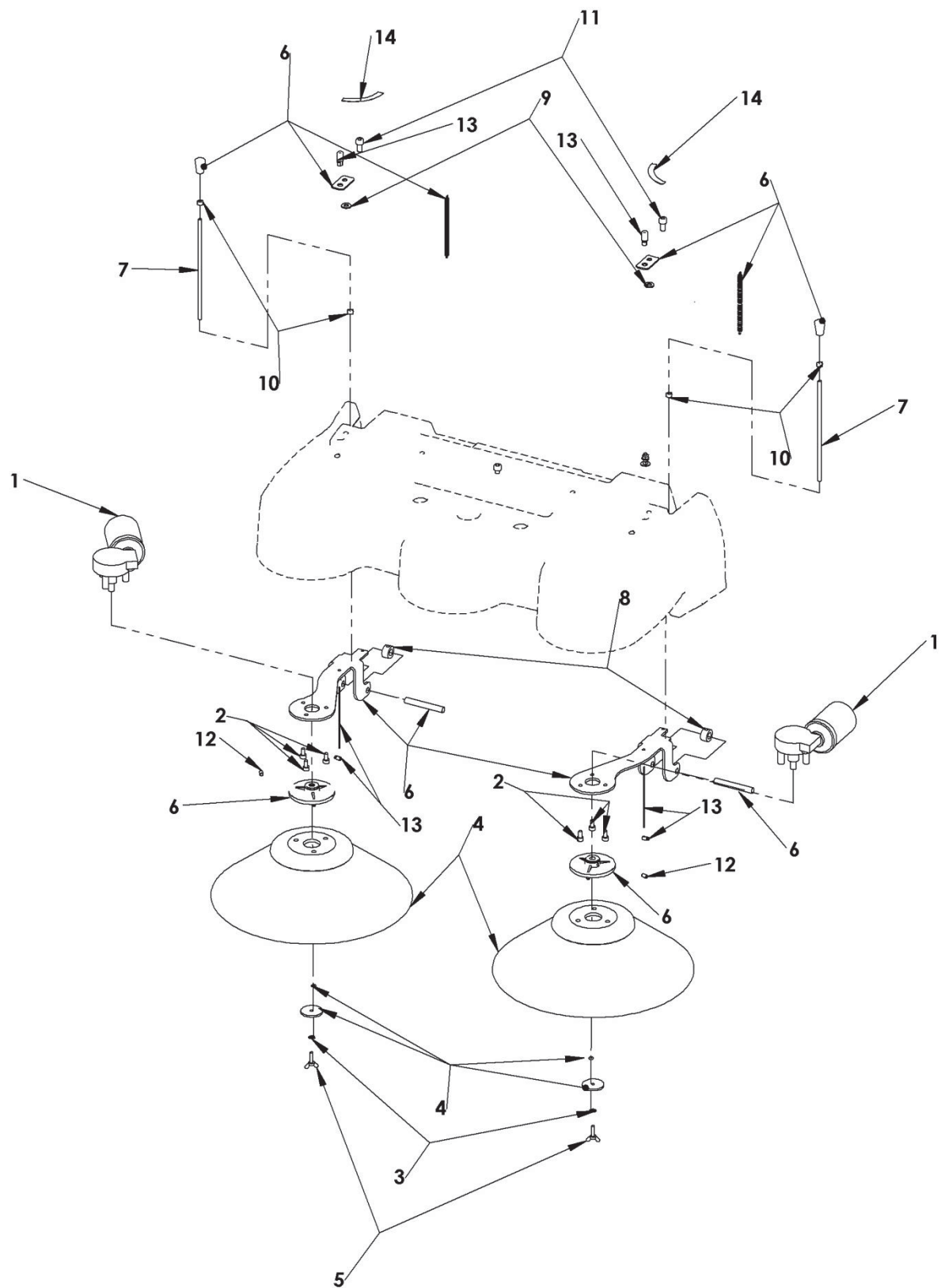


Fig. 4 – Side Brush Assy

Ref.	Part No.	Description	Qty.
▽	1	9010067 ● Motor Kit Side Brush (Includes Gear Motor Qty 1, & Mounting Hardware)	2
▲	2	N/A Screw, Soc, M6x1x12	6
▲	3	N/A Washer, Lock, M4	2
▽	4	9010040 ● Side Brush Kit (Includes Side Brush Qty1 & Mounting Hardware)	2
▲	5	N/A Wing Screw, M5x0.8x20	2
▽	6	9010169 Bracket Kit, Side Brush (Includes Side Brush Bracket lh Qty1, Side Brush Bracket rh Qty1, Side Brush Flange Qty2, Cable Bracket Qty2, Spring Qty2, Knob Qty2 & Mounting Hardware)	1
▲	7	N/A Screw, Stud, M8x1.25x200	2
▲	8	N/A Adjusting Ring D=12	2
▲	9	N/A Washer, Flat, M6	2
▲	10	N/A Nut, Hex, Std, M6	4
▲	11	N/A Screw, Soc, M8x1,.25x16	2
▲	12	N/A Screw, Headless, M6x1x10	2
	13	9010053 ● Side Brush Lift Cable Kit (Includes Side Brush Cables Qty2 & Cable Fitting Qty2 )	1
	14	9010103 ● Label Kit (Includes Tennant Logo Qty1, Label S9 Qty2, Label Warning NA Qty1, Label Warning EU Qty1, Label Side Brush Qty1, Label Main Brush Qty1, Label Shaker Qty1)	1

▽ ASSEMBLY

▲ INCLUDED IN ASSEMBLY

● RECOMMENDED STOCK ITEM

N/A Not Available Separately. Local Purchase.



Fig. 5 – Filter and Shaker Assy

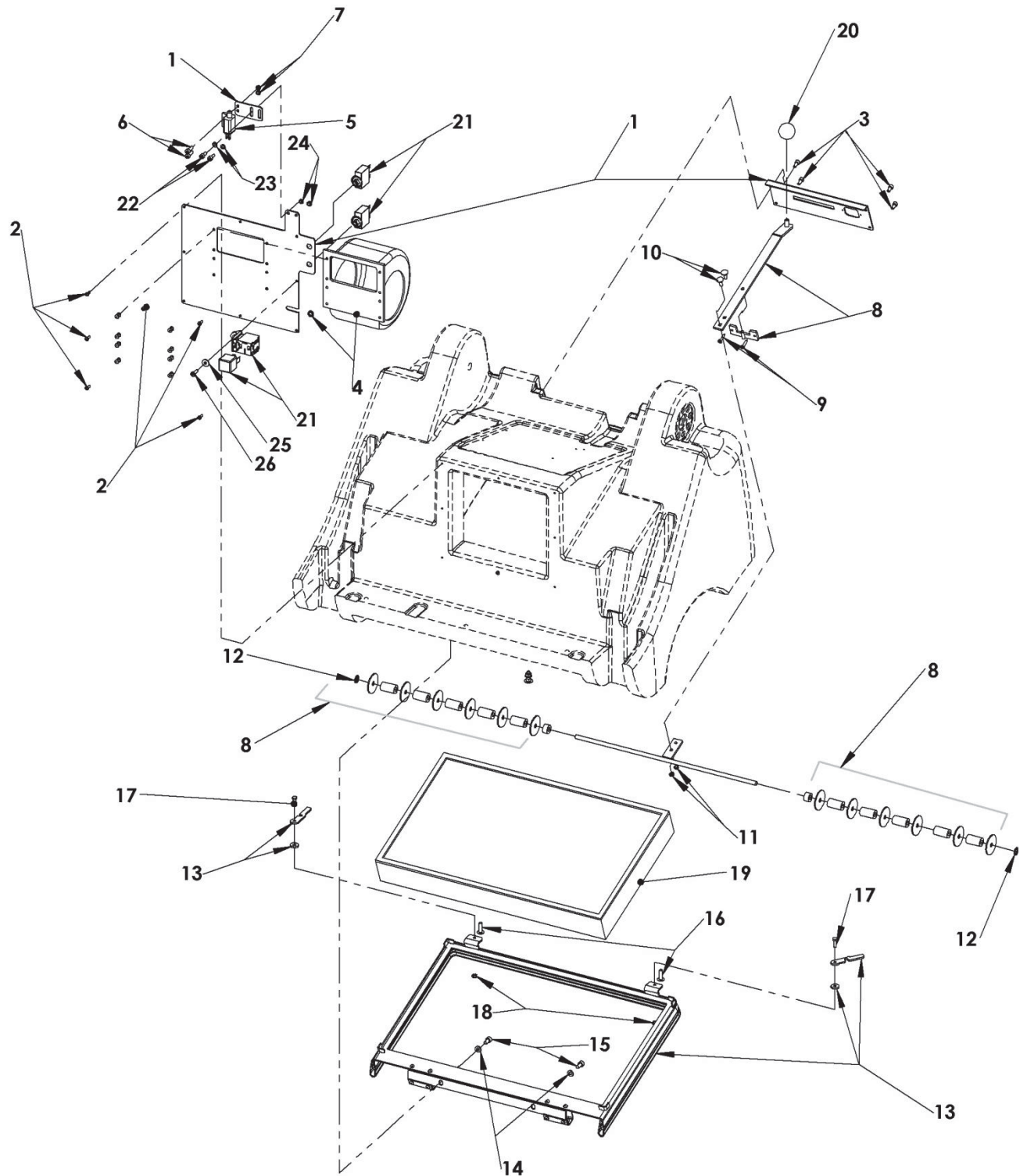


Fig. 5 – Filter and Shaker Assy

Ref.	Part No.	Description	Qty.
▽	1	9010168 Bracket Kit, Fan, Batt (Includes Fan Bracket Qty1, Shaker Bracket Qty1, Switch Holder Qty1, & Mounting Hardware)	1
▲	2	N/A Screw, Pan, 3.5x16 TCUT	7
▲	3	N/A Screw, Soc, M5x0.8x10	4
	4	9010065 ● Fan Blower Kit (Includes Fan Qty1 & Mounting Hardware)	1
▽	5	9010046 ● Switch Kit ( Includes Switch & Mounting Hardware)	1
▲	6	N/A Screw, Soc, M5x0.8x16	2
▲	7	N/A Nut, Hex, Lock, M5	2
▽	8	9010062 Shaker Kit (Includes Bracket Qty1, Lever Qty1, Axle Qty1, Bushing Qt2, Bushing Qty10, Rubber Disc Qty12 & Mounting Hardware)	1
▲	9	N/A Screw, Pan, 4x20 TCUT	2
▲	10	N/A Bolt Carriage, M5x0.8x16	2
▲	11	N/A Nut, Hex, Lock, M5	2
▲	12	N/A Retainment Ring D=8	2
▽	13	9010193 Filter Holder Kit (Includes Filter Bracket Qty1, Hinge Bracket Qty1, Hinge Bracket Qty2, Hinge Qty4, Sealing Qty1, Locking Handle Qty2 & Mounting Hardware)	1
▲	14	N/A Washer, Flat M6	2
▲	15	N/A Screw, Soc, M6x1x12	2
▲	16	N/A Screw, Rnd M6x1x20	2
▲	17	N/A Screw, Hex, M5x0.8x16	2
▲	18	N/A Nut, Hex, Lock, M5	2
	19	9010042 ● Filter Kit (Includes FilterQty1)	1
	20	9010011 ● Knob Kit (Includes Black Balls M8 Qty 2, Yellow Balls M8 Qty 1, Knurled Knob M10 Qty 2, Knurled Knob M6 Qty 1 & Mounting Hardware)	1
▽	21	9010418 ● Circuit Breaker and Relay Kit (Includes Circuit Breaker 20A Qty1, Circuit Breaker 25A Qty1, Relay Holder Qty1, Relay Qty1 & Mounting Hardware)	1
▲	22	N/A Screw, Hex, M5x0.8x12	2
▲	23	N/A Washer, Flat M5	2
▲	24	N/A Nut, Hex, Lock, M5	2
▲	25	N/A Washer, flat M5 D=15	1
▲	26	N/A Screw, Pan, 4.8x16 TCUT	1

▽ ASSEMBLY

▲ INCLUDED IN ASSEMBLY

● RECOMMENDED STOCK ITEM

N/A Not Available Separately. Local Purchase.

Fig. 6 – Cover and Electrical Assy

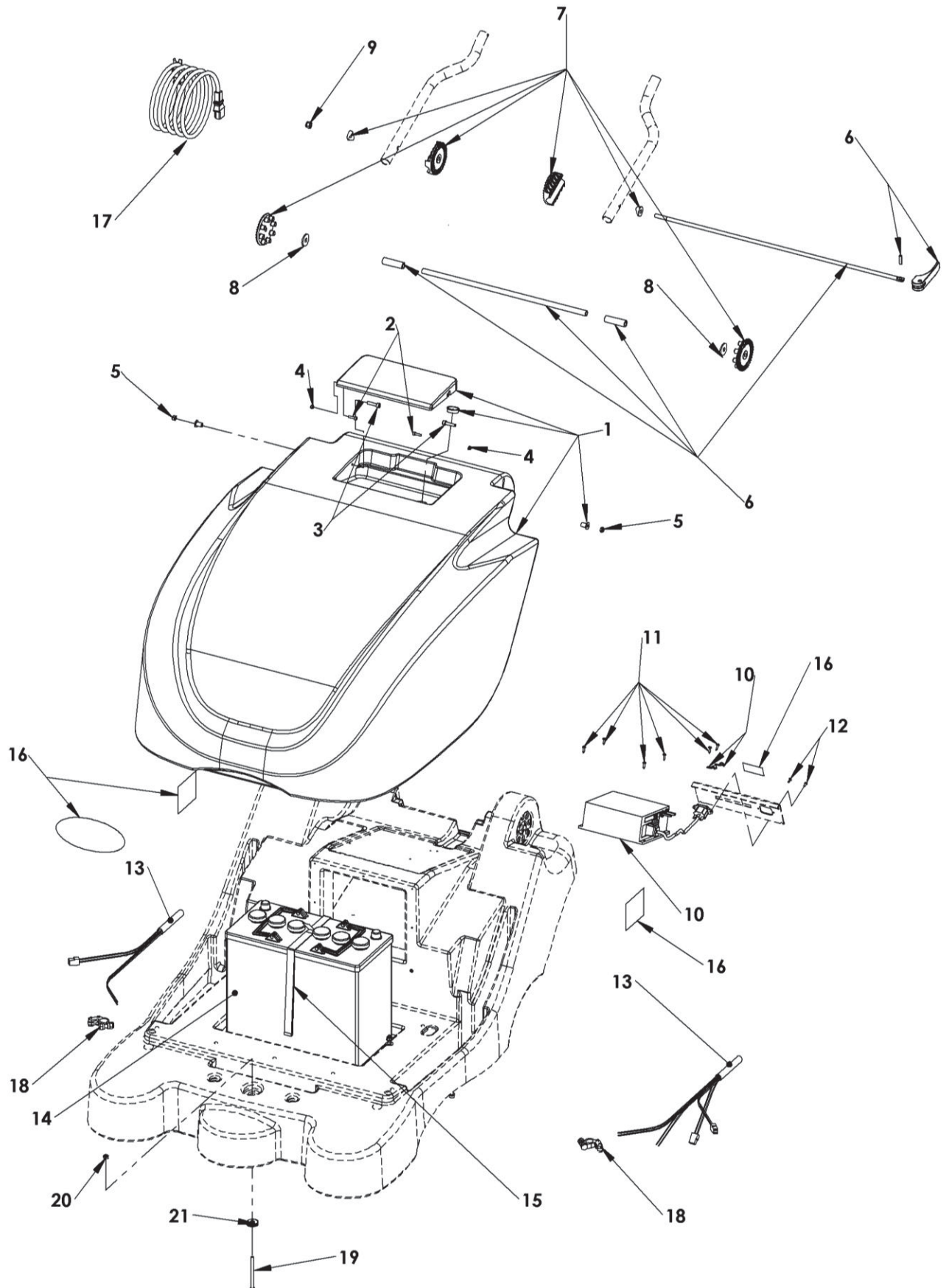


Fig. 6 – Cover and Electrical Assy

Ref.	Part No.	Description	Qty.
▽	1	9010137 Front Cover Kit (Includes Frontcover Qty1, Flap Qty1, Plug Qty 1, Sleeve Qty 2, Knurled Knob Qty 1 & Mounting Hardware)	1
▲	2	N/A Screw, Soc, M4x0.7x16	2
▲	3	N/A Screw, Soc, M6x0.8x25	2
▲	4	N/A Nut, Hex, Lock, M4	2
▲	5	N/A Nut, Hex, Lock, M6	2
	6	9010180 Handle Rod & Lever Kit (Includes Lever Qty1, Pipe Long Qty1, Pipe Short Qty2, Rod Qty1 & Spring 6x22)	1
▽	7	9010034 ● Handle Pivot Disc Kit (Includes Hinge Outside Qty2, Hinge Inside Qty2, Plastic Disc Qty2, & Mounting Hardware)	1
▲	8	N/A Washer, Flat, M8x28	2
▲	9	N/A Nut, Hex, Lock, M8	1
▽	10	9010048 ● Charger Kit (Includes Charger Qty1, Clamp Qty2 & Mounting Hardware)	
▲	11	N/A Screw, Pan, 3.5x13 TCUT	6
▲	12	N/A Screw, Hex, M3x0.5x8	2
	13	9010052 Wire Harness Kit	1
	14	1071125 ● Battery NA	1
	14	994201 ● Battery EU	1
	15	9010168 Bracket Kit Battery and Fan (Includes Strap Qty1)	1
	16	9010103 ● Label Kit (Includes Tennant Logo Qty1, Label S9 Qty2, Label Warning NA Qty1, Label Warning EU Qty1, Label Side Brush Qty1, Label Main Brush Qty1, Label Shaker Qty1)	1
	17	1044067 ● Cord, Power, 16/3 BLK [2,5meter, US/JP]	1
		1044069 ● Cord, Power, BLK [2,5meter, BRZL/UK]	
		1044068 ● Cord, Power, BLK [2,5meter, KOR/CE]	
		1026325 ● Cord, Power, 1.0mm2/3 BLK [2,5meter, AUS]	
		1026330 ● Cord, Power, 1,000mm2 BLK [2,5meter, CHINA]	
	18	9010474 ● Terminal Clamp Kit, Battery (Includes "+" Terminal Qty1, "-" Terminal Qty1)	1
	19	N/A Screw, Hex, M6x1x90 (Included with item 1)	1
	20	N/A Nut, Hex, Lock, M6 (Included with item 1)	1
	21	N/A Knob, Knurled, M6 (Included with Item 1)	1

Note: Knob also included with Knob Kit 9010011

▽ ASSEMBLY

▲ INCLUDED IN ASSEMBLY

● RECOMMENDED STOCK ITEM

N/A Not Available Separately. Local Purchase.



Fig. 7 – Handle Assy

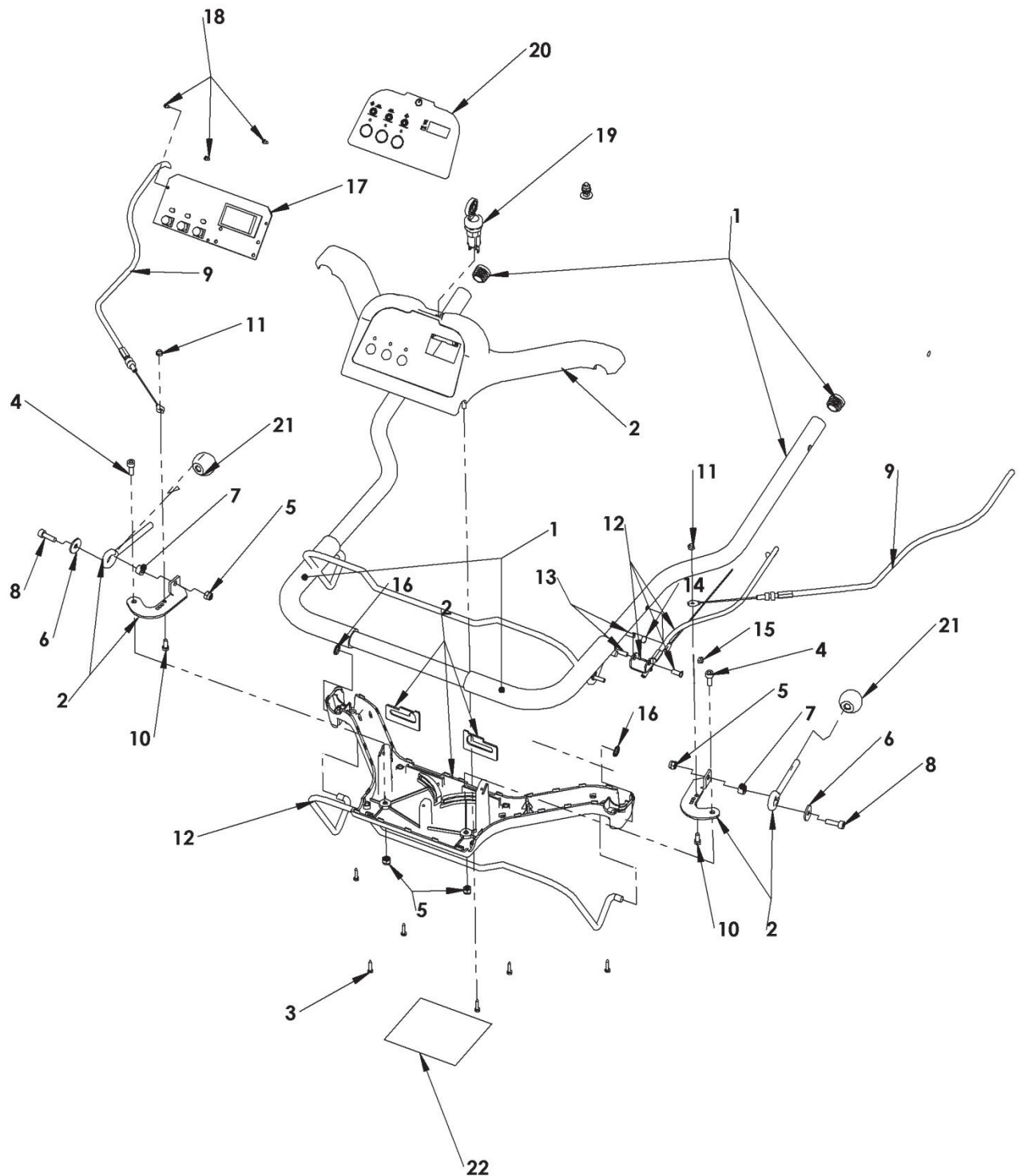




Fig. 7 – Handle Assy

Ref.	Part No.	Description	Qty.
▽	1 9010033	Handle Kit (Includes Handle Qty 1, Softgripp Qty2, Plugs Qty2)	1
▽	2 9010044	Inst Panel Kit (Includes Panel Top Qty1, Panel Bottom Qty1, Slotted Bracket Qty2, Adjuster Bracket lh Qty1, Adjuster Bracket rh Qty1, Eye Bolt Qty2 & Mounting Hardware)	1
▲	3 N/A	Screw, Pan 3.5x20 TCUT	6
▲	4 N/A	Screw, Soc M6x1x12	2
▲	5 N/A	Nut, Hex, Lock, M6	4
▲	6 N/A	Washer, Flat M6x22	2
▲	7 N/A	Sleeve M6	2
▲	8 N/A	Screw, Soc M6x1x20	2
▽	9 9010053 ●	Side Brush Lift Cable Kit ( Includes Side Cables Qty2, Side Cable Qty1 & Mounting Hardware)	1
▲	10 N/A	Screw, Hex M5x0.8x20	2
▲	11 N/A	Nut, Hex, Lock, M5	2
▽	12 9010175 ●	Bail and Cable Kit Propel (Includes Bail Qty1, Clutch Cable Qty1, Bracket Qty1, Sleeve Nut Qty1 & Mounting Hardware)	1
▲	13 N/A	Screw, Soc M5x0.8x20	2
▲	14 N/A	Nut, Hex, Std, M5	1
▲	15 N/A	Nut, Hex, Lock, M5	1
▲	16 N/A	Retainment Ring 8	2
▽	17 9010050 ●	Controller Kit ( Includes Controller Qty1 & Mounting Hardware)	1
▲	18 N/A	Screw, Pan 2.9x13 TCUT	3
	19 9010045 ●	Key Switch	1
	20 1071274 ●	Inst Panel Label	1
	21 9010011 ●	Knob Kit (Includes Black Balls M8 Qty 2, Yellow Balls M8 Qty 1, Knurled Knob M10 Qty 2, Knurled Knob M6 Qty 1 & Mounting Material)	1
	22 9010103 ●	Label Kit (Includes Tennant Logo Qty1, Label S9 Qty2, Label Warning NA Qty1, Label Warning EU Qty1, Label Side Brush Qty1, Label Main Brush Qty1, Label Shaker Qty1)	1

▽ ASSEMBLY

▲ INCLUDED IN ASSEMBLY

● RECOMMENDED STOCK ITEM

N/A Not Available Separately. Local Purchase.

# Electrical Diagram

