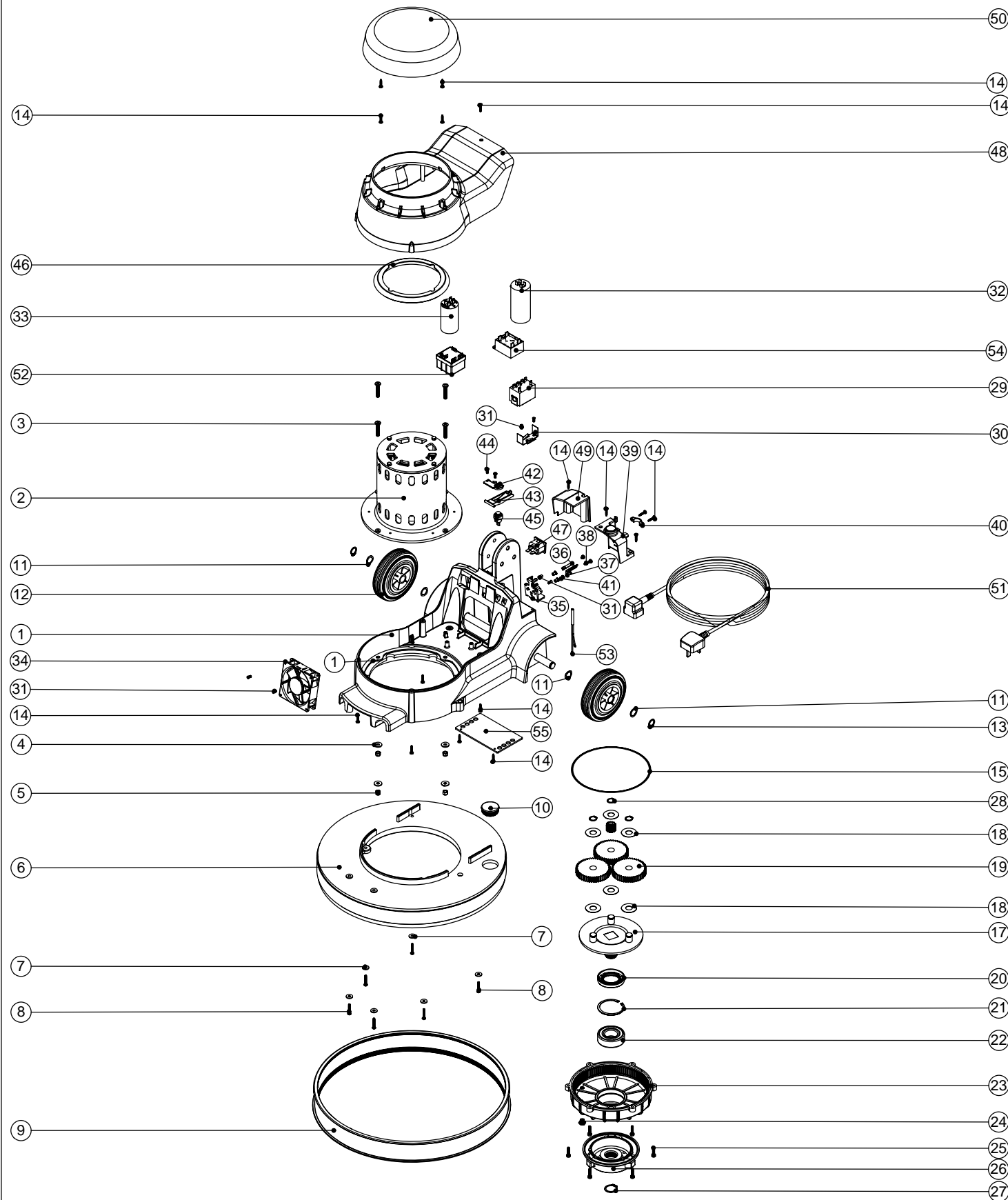


Numatic International Spare Parts
Model No:NR 1500S BASE ASSEMBLY

234486
 DRAWING: EXP-0917 ISS:A06
 26/03/2007

NB: FOR WIRING SEE DRAWING: WD-0345



Numatic International Spare Parts
Model No: NR 1500S BASE ASSEMBLY

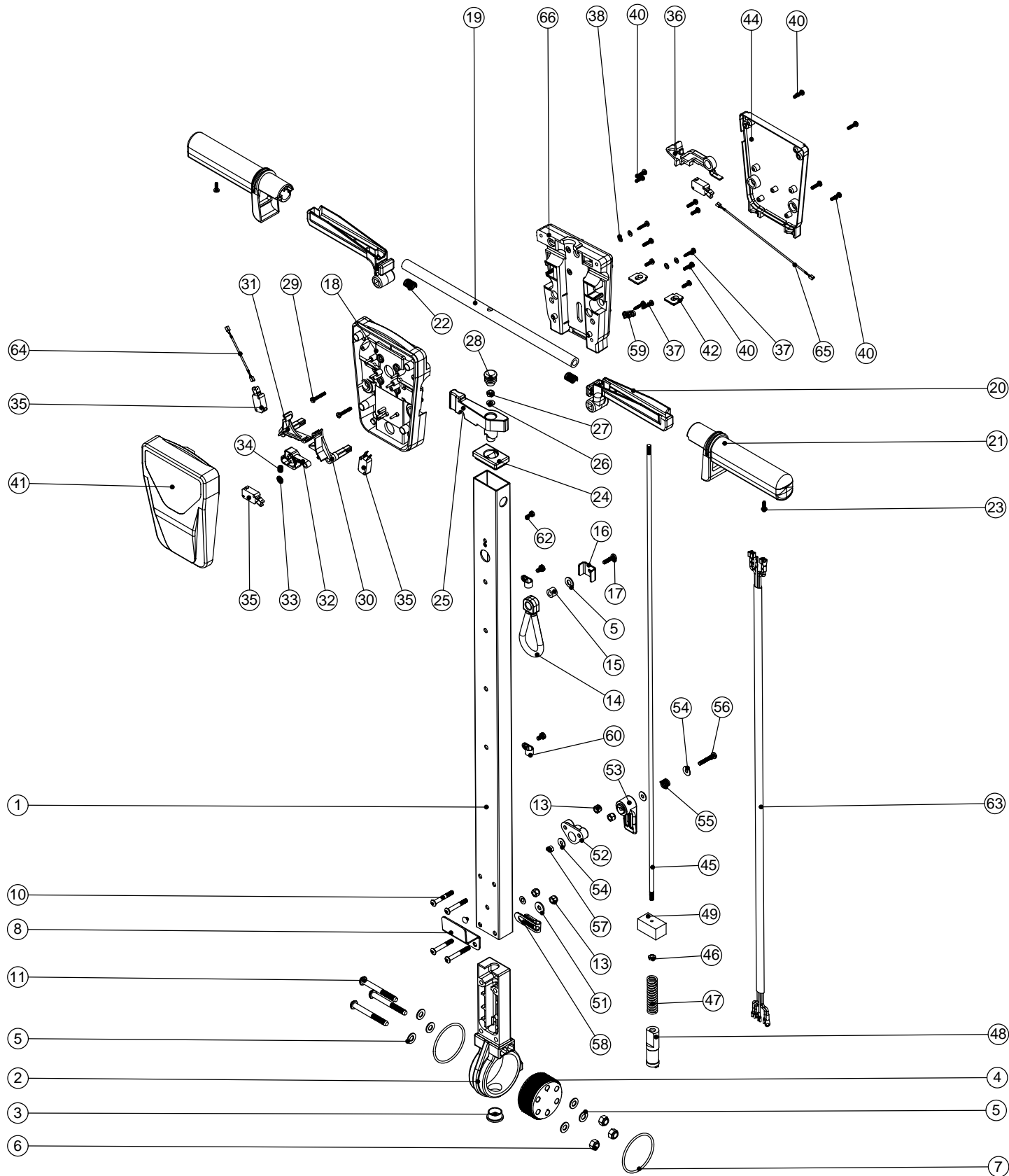
POS:	ITEM NO:	DESCRIPTION:	COMMENTS:
1	338580	PRINTED GRAPHITE BASE MOULDING SUB ASSEMBLY C/W M8 MULTISERT (SPARE PART)	BOTTOM MOTOR GASKET 227557
2	205136	NR 4 POLE MOTOR 230V 50Hz M12 SHAFT	
3	219268	M6 X 35MM LONG POZI PAN SCREW	
4	219008	M6 FORM G WASHER	
5	219088	M6 NYLON INSERT NUT	
6	329110	GREY SANDING DECK	
7	219005	M5 FORM G WASHER	
8	219369	No8 X 1 INCH LONG POZI PAN STAINLESS STEEL PLASTITE SCREW	
9	206475	GREY MEDIUM BUFFER EXTRUSION	
10	229400	BLACK END STOP	
11	219219	21.5MM X 16.3MM WAVE WASHER	
12	229060	WHEEL GREY BLACK HUB	
13	229051	EXTERNAL CIRCLIP	
14	219914	NO6 X 5/8 INCH LONG POZI-PAN PLASTITE STAINLESS STEEL SCREW	
15	230001	V OIL SEAL	
16	230027	12 TOOTH PINION GEAR (STANDARD SPEED)	
17	230291	PLANET CARRIER & PIN ASSEMBLY (50HZ STANDARD SPEED)	
18	230215	35MM X 15 I/D ALUMINIUM WASHER	
19	230013	48 TOOTH SPUR GEAR(STANDARD SPEED 50/60HZ)	
20	230069	10MM DOUBLE LIP OIL SEAL	
21	230200	62MM INTERNAL CIRCLIP	
22	230094	62MM O/D X 30MM I/D X 20MM BEARING (WITH SEALS)	
23	230060	BOTTOM PLATE WITH MACHINED GEAR TEETH	
24	219801	GEAR BOX OIL PLUG	
25	219820	M5 X 20MM LONG SOCKET CAP SCREW	
26	230059	DIE CAST CHUCK	
27	230048	26MM EXTERNAL CIRCLIP	
28	230015	15MM EXTERNAL CIRCLIP	
29	206575	240V / 25A RELAY & BRACKET	
30	206500	RELAY BRACKET	
31	219651	M4 X 10MM LONG POZI PAN THREAD CUTTING SCREW	
32	205079	115 MFD MOTOR START CAPACITOR C/W RESISTOR	
33	220876	20 MFD MOTOR RUN CAPACITOR (450V)	
34	205072	PROCESSED 12V DC BRUSHLESS FAN	
35	216288	TERMINAL BLOCK	
36	206562	CONTACT PIN	
37	206563	EARTH CONTACT PIN	
38	219090	M4 X 8MM LONG POZI PAN SEMS SCREW	
39	206865	16A INPUT COVER C/W WINDOW PLUG	
40	216290	CABLE CLAMP	
41	219009	M4 BRASS TAPPEX INSERT	
42	216293	LEVER PLATE	
43	216292	CUT OUT LEVER	
44	219677	No4 X 10MM LONG POZI PAN PLASTITE SCREW	
45	229454	HANDLE SWITCH	
46	227556	TOP MOTOR GASKET	
47	220964	APPLIANCE OUTPUT SOCKET	
48	229441	FLOOR MACHINE MIDDLE SECTION MOULDING	
49	216291	OUTPUT COVER	
50	328112	NU SPEED TOP SECTION MOULDING PRINTED	
51	236072	MAINS CABLE (15.0 METERS / 1.5MM / 3 CORE CABLE / SOCKET + UK PLUG)	OPTIONAL CABLE
51	236075	MAINS CABLE (15.0 METERS / 1.5MM / 3 CORE CABLE / SOCKET + EURO PLUG)	OPTIONAL CABLE
51	236087	MAINS CABLE (15.0 METERS / 1.5MM / 3 CORE CABLE / SOCKET + AUSTRALIAN PLUG)	OPTIONAL CABLE
51	236078	MAINS CABLE (15.0 METERS / 1.5MM / 3 CORE CABLE / SOCKET + SWISS PLUG)	OPTIONAL CABLE
51	236081	MAINS CABLE (15.0 METERS / 1.5MM / 3 CORE CABLE / SOCKET + SOUTH AFRICAN PLUG)	OPTIONAL CABLE
52	206823	230V SINGLE SPEED VOLTAGE RELAY	
53	321193	AC LED WITH TERMINALS	
54	206753	UNIVERSAL POWER SUPPLY	
55	329228	GAURD PLATE	

Numatic International Spare Parts

Model No: NR HANDLE ASSEMBLY

234514
DRAWING: EXP-0943 ISS:A02
26/03/2007

NB: FOR WIRING SEE DRAWING: WD-0345



Numatic International Spare Parts

Model No: NR HANDLE ASSEMBLY

POS:	ITEM NO:	DESCRIPTION:	COMMENTS:
1	429096	LOLINE HANDLE TUBE PAINTED (830)	
2	229081	HANDLE CASTING MACHINED	
3	229099	25MM DIA HOLE PLUG	
4	229482	DUAL SETTING ADJUSTMENT GEAR	
5	219010	M8 FORM A WASHER	
6	219078	M8 NYLON INSERT NUT	
7	219254	O RING 3MM DIA X 60MM I/D	
8	329000	HANDLE BRACKET	
9	219881	M6 X 45MM SOCKET BUTTON HEAD SCREW	
10	219807	M6 X 40MM LONG SOCKET BUTTON HEAD BOLT	
11	219806	M8 X 70MM LONG SOCKET BUTTON HEAD BOLT	
12	229009	BLANKING PLUG	
13	219088	M6 NYLON INSERT NUT	
14	226008	STRESS RELIEF	
15	226006	SPACER (BLACK)	
16	329231	STRESS RELIEF BRACKET	
17	219054	M5 X 20MM LONG POZI PAN SCREW	
18	227576	FRONT INNER HALF MOULDING	
19	338269	CROSS TUBE	
20	227581	TRIGGER MOULDING	
21	227580	HAND GRIP MOULDING	
22	219803	TRIGGER COMPRESSION SPRING	
23	219270	No8 X 1/2 INCH LONG POZI PAN SELF TAP SCREW	
24	227582	HANDLE PLUG MOULDING	
25	227583	ADJUSTMENT LEVER MOULDING	
26	219493	M6 NYLON WASHER	
27	219642	M6 STAINLESS STEEL NYLON INSERT NUT	
28	20638V	CSP-302 BLACK TUBE END STOP	
29	219811	NO8 X 1 INCH LONG POZI-PAN SELF TAP SCREW	
30	227585	LEFT HAND SWITCH OPERATING LEVER MOULDING	
31	227586	RIGHT HAND SWITCH OPERATING LEVER MOULDING	
32	227587	CENTRE SWITCH OPERATING LEVER MOULDING	
33	219805	4MM SPIREFIX	
34	219804	SWITCH COMPRESSION SPRING	
35	229483	SNAP ACTION SWITCH	
36	227584	INTERLOCK LEVER MOULDING	
37	219107	No6 X 5/8 INCH LONG POZI PAN PLASTITE SCREW	
38	219206	M4 FORM A WASHER	
39	219101	No8 X 1/2 INCH LONG POZI PAN PLASTITE SCREW	
40	219105	No8 X 5/8 INCH LONG POZI PAN PLASTITE SCREW	
41	318959	PRINTED FRONT COVER MOULDING	
42	329539	MODIFIED BLANKING PLATE	
43	227666	BLANKING PLUG	
44	318968	PRINTED REAR COVER MOULDING	
45	229484	840MM HANDLE LOCKING ROD	
46	219099	M6 HALF NUT	
47	229138	SPRING	
48	229073	GEAR LOCKING PIN	
49	229030	ANTI VIBRATION PAD	
50	219007	M6 FORM B WASHER	
51	219008	M6 FORM G WASHER	
52	227806	CABLE RELEASE BASE MOULDING	
53	227807	CABLE RELEASE TOP MOULDING	
54	219644	M5 FORM G STAINLESS STEEL WASHER	
55	206599	SPRING (REF:C5514370)	
56	219720	M5 X 30MM LONG STAINLESS STEEL POZI PAN SCREW	
57	219076	M5 NYLON INSERT NUT	
58	229139	P-CLIP	
59	229669	LOLINE HANDLE CABLE CLAMP	
60	219393	P CLIP	
61	219047	M5 X 10MM LONG POZI PAN SEMS SCREW	
62	219471	M4 X 12MM LONG POZI PAN SEMS SCREW	
63	230134	NR 5 CORE LOOM ASSEMBLY (UK/EURO)	
64	321247	60MM LONG BLUE LINK WIRE	
65	321248	190MM LONG BLUE LINK WIRE	
66	227577	REAR INNER HALF MOULDING	