

GWD 320 / 335 / 350 /375

Model:

D 120
GWD 320 STEEL
GWD 320/ 320 C
GWD 335 STEEL
GWD 335/ 335 C
GWD 350
GWD 350 STEEL
GWD 350-2
GWD 350-2 STEEL
GWD 360 C
GWD 375
GWD 375 STEEL
GWD 375-2
GWD 375-2 STEEL
WD 135 INOX
WD 250
WD 275 INOX



Part List English

12-01-2014

Table of Contents

GWD 320 / 335 / 350 /375

| | |
|--|-----------|
| Motor top GD 320 | 3 |
| Motor top GWD 320, GWD 335 | 5 |
| Motor top GWD 320 Craftsman | 7 |
| Motor top one motor,GWD 350, GWD 375 | 9 |
| Motor top two motor, GWD 350, GWD 375 | 11 |
| Container, GWD 320, GWD 335 | 13 |
| Container, GWD 350, GWD 375 | 15 |
| Trolleys, GD 320, GWD 320, 335, 350, 375 | 17 |
| Front nozzle, GWD 350, GWD 375 (EU-UK-AU/NZ-JP) | 19 |
| Nozzles and hoses. All models | 21 |
| Filter and dustbags. All models | 23 |
| RECOMMENDED SPARE PARTS | 25 |

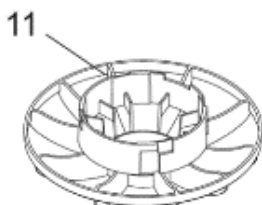
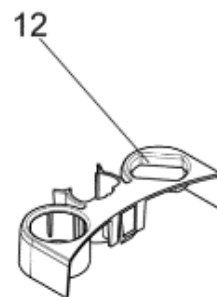
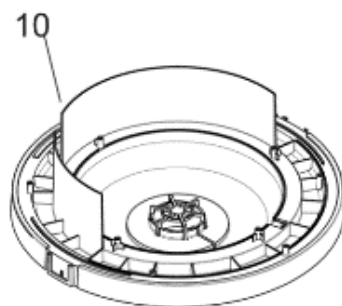
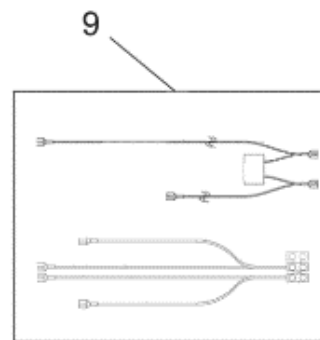
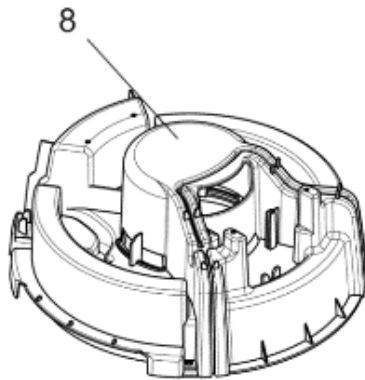
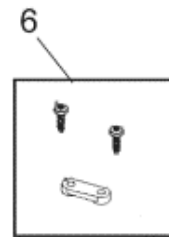
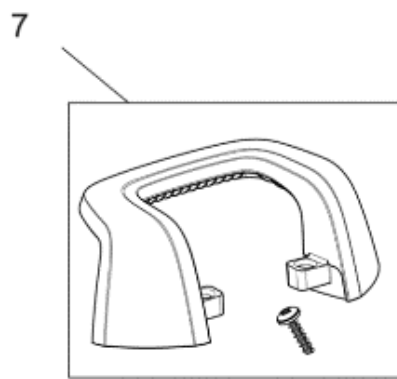
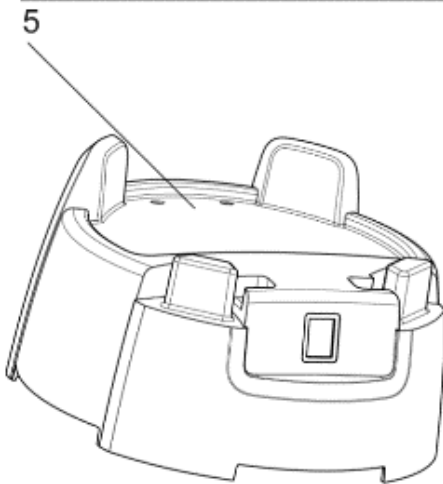
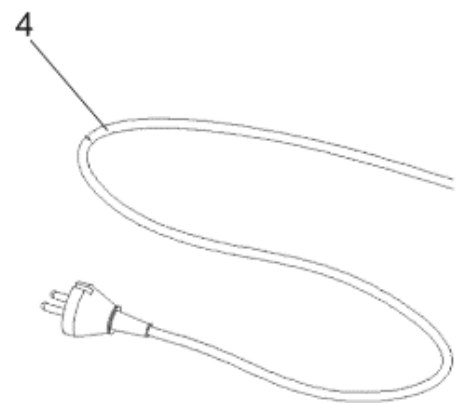
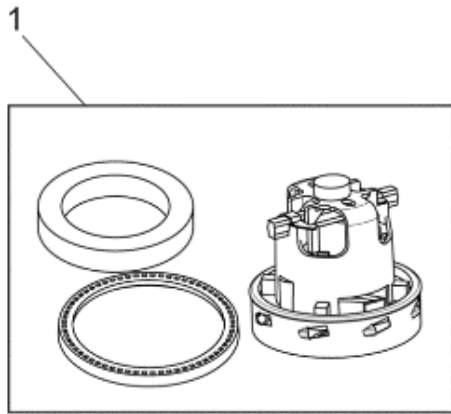
Motor top GD 320

GWD 320 / 335 / 350 / 375

12-01-2014

Part List ID
B5933

3



Motor top GD 320

GWD 320 / 335 / 350 /375

12-01-2014

Part List ID

B5933

4

| Pos | Part no. | Qty | Description | |
|-----|--------------|-----|--|-----------------|
| 0 | 140 9582 010 | 1 | CARTON GWD 320 | |
| 1 | 140 8689 500 | 1 | FAN UNIT BYPASS 220-240V GWD320 GWD335 | |
| 1 | 140 8689 510 | 1 | FAN UNIT BP 1350W 100-120 | |
| 3 | 107404540 | 1 | SWITCH 0-1 DOUBLE POLE SET | |
| 4 | 107401614 | 1 | CORD SET US/TW 3C 15.5M YELLOW | |
| 4 | 12003805 | 1 | CORD SET JP CPL. L 15M | |
| 4 | 12222501 | 1 | CORD SET EU L 10M | |
| 4 | 12222503 | 1 | CORD KIT UK 10M | |
| 4 | 12222506 | 1 | CORD SET AU/NZ L 10M | |
| 5 | 140 8652 500 | 1 | COVER OUTER GD 320+GWD 320/335 | |
| 6 | 140 6560 500 | 1 | ANTI STRAIN CLIP | |
| 7 | 140 8650 500 | 1 | HANDLE GD 320+GWD 320/335 | |
| 8 | 140 8653 500 | 1 | COVER FAN UNIT | |
| 9 | 140 7042 500 | 1 | WIRE, INTERNAL FOR GWD 300 | |
| 10 | 140 8664 500 | 1 | CHASSIS | |
| 11 | 140 8659 500 | 1 | BASKET GD 320 | |
| 12 | 140 8698 510 | 1 | HOLDER ACCESSORIES 32MM B | |
| NI | 107402147 | 1 | LABEL KIT FOR US GWD MACHINES | (US only) |
| NI | 140 9582 000 | 1 | CARTON GWD 320 LINEDRAWING | BOX FOR RE-PACK |

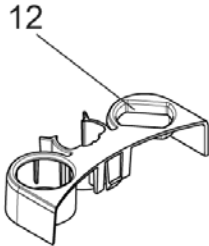
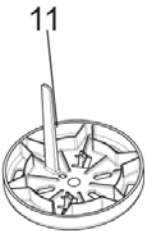
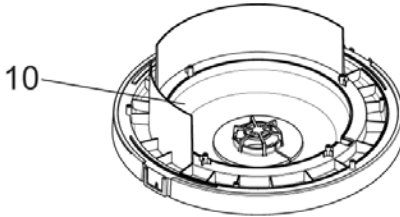
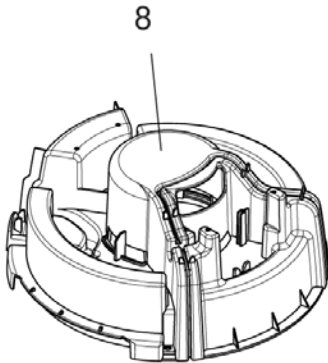
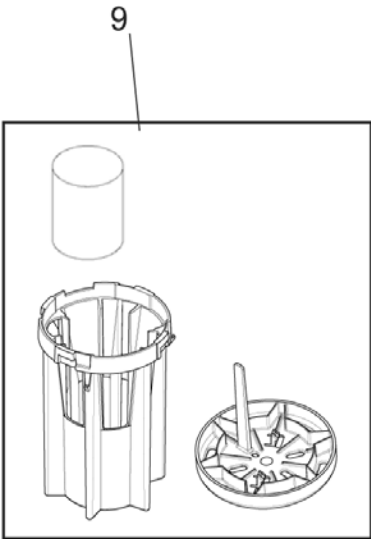
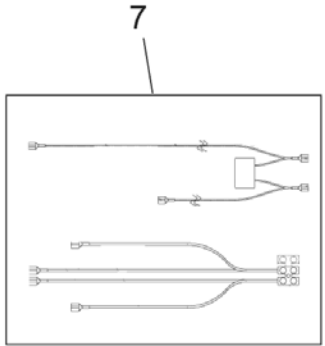
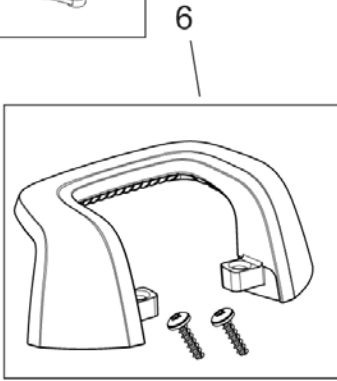
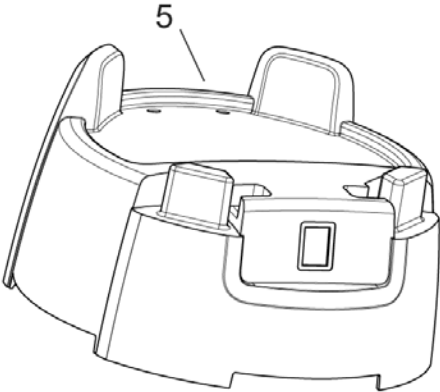
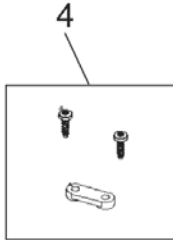
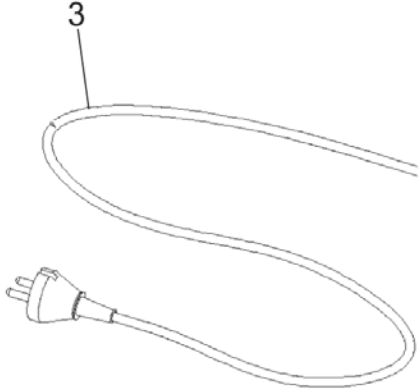
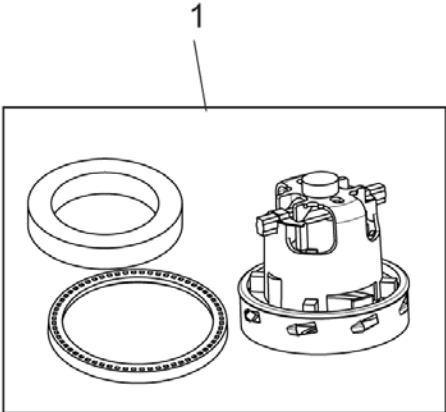
Motor top GWD 320, GWD 335

GWD 320 / 335 / 350 / 375

12-01-2014

Part List ID
B5935

5



Motor top GWD 320, GWD 335

GWD 320 / 335 / 350 /375

12-01-2014

Part List ID

B5935

6

| Pos | Part no. | Qty | Description | |
|-----|--------------|-----|--|-----------------|
| 1 | 140 8689 500 | 1 | FAN UNIT BYPASS 220-240V GWD320 GWD335 | |
| 1 | 140 8689 510 | 1 | FAN UNIT BP 1350W 100-120 | |
| 2 | 107404540 | 1 | SWITCH 0-1 DOUBLE POLE SET | |
| 3 | 12003805 | 1 | CORD SET JP CPL. L 15M | |
| 3 | 12222501 | 1 | CORD SET EU L 10M | |
| 3 | 12222503 | 1 | CORD KIT UK 10M | |
| 3 | 12222506 | 1 | CORD SET AU/NZ L 10M | |
| 3 | 147 1042 010 | 1 | CORD SET CHINA 12.5M | |
| 4 | 140 6560 500 | 1 | ANTI STRAIN CLIP | |
| 5 | 140 8652 500 | 1 | COVER OUTER GD 320+GWD 320/335 | |
| 6 | 140 8650 500 | 1 | HANDLE GD 320+GWD 320/335 | |
| 7 | 140 7042 500 | 1 | WIRE, INTERNAL FOR GWD 300 | |
| 8 | 140 8653 500 | 1 | COVER FAN UNIT | |
| 9 | 140 8680 500 | 1 | FLOAT BASKET GWD 300 SERIES | |
| 10 | 140 8664 500 | 1 | CHASSIS | |
| 11 | 147 1119 500 | 1 | FLOAT BASKET ADAPTER | |
| 12 | 140 8698 510 | 1 | HOLDER ACCESSORIES 32MM B | |
| NI | 107402147 | 1 | LABEL KIT FOR US GWD MACHINES | (US only) |
| NI | 140 9583 000 | 1 | CARTON GWD 335 LINEDRAWING | BOX FOR RE-PACK |

Motor top GWD 320 Craftsman

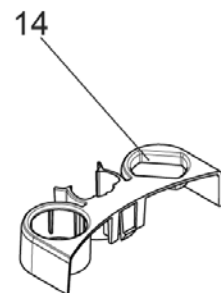
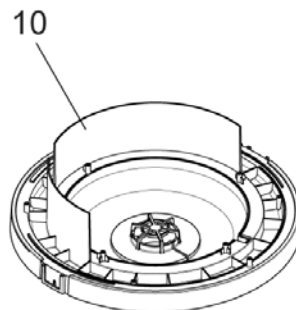
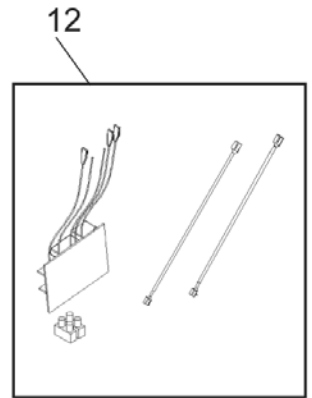
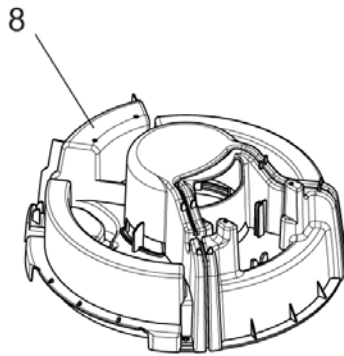
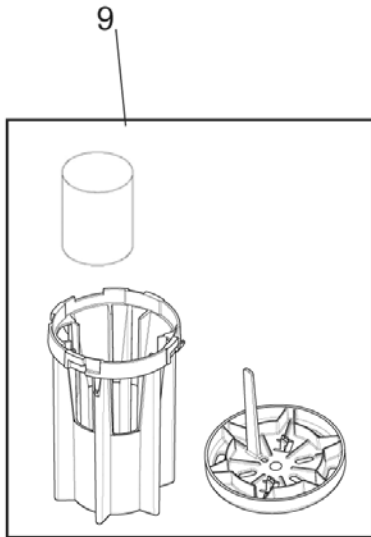
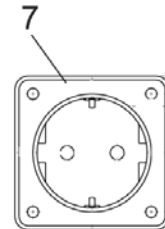
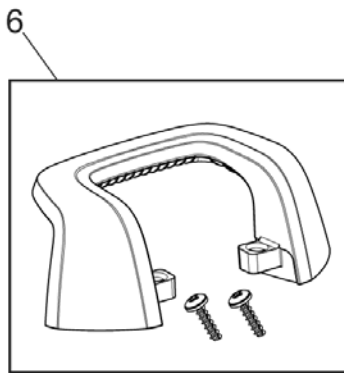
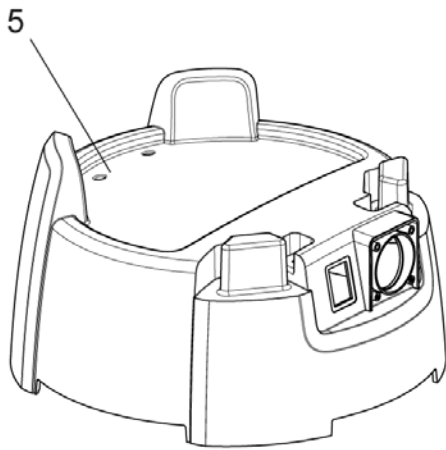
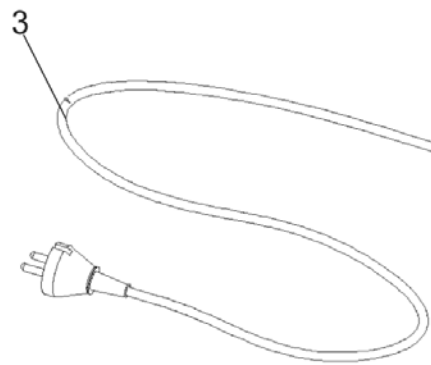
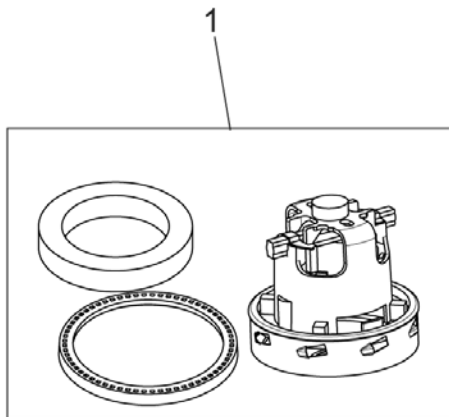
GWD 320 / 335 / 350 / 375

12-01-2014

Part List ID

B5937

7



Motor top GWD 320 Craftsman

GWD 320 / 335 / 350 /375

12-01-2014

Part List ID

B5937

8

| Pos | Part no. | Qty | Description |
|-----|--------------|-----|---|
| 1 | 140 8689 500 | 1 | FAN UNIT BYPASS 220-240V GWD320 GWD335 |
| 1 | 140 8689 510 | 1 | FAN UNIT BP 1350W 100-120 |
| 1 | 140 8689 520 | 1 | FAN UNIT BP 1000W 100-120V |
| 2 | 140 8677 500 | 2 | SWITCH CRAFTSMAN |
| 3 | 140 5669 500 | 1 | CORD SET EU 10.5M |
| 3 | 140 6777 500 | 1 | CORD SET UK 10M |
| 4 | 140 6560 500 | 1 | ANTI STRAIN CLIP |
| 5 | 140 8666 500 | 1 | COVER OUTER CRAFTSMAN GREY |
| 6 | 140 8650 500 | 1 | HANDLE GD 320+GWD 320/335 |
| 7 | 140 8690 500 | 1 | ELECTRICAL OUTLET F/EU-PL UG |
| 7 | 140 8690 510 | 1 | ELECTRIC OUTLET F/UK-PLUG |
| 7 | 140 8690 520 | 1 | ELECTRIC OUTLET F/AU/NZ PLUG |
| 8 | 140 8653 500 | 1 | COVER FAN UNIT |
| 9 | 140 8680 500 | 1 | FLOAT BASKET GWD 300 SERIES |
| 10 | 140 8664 500 | 1 | CHASSIS |
| 12 | 140 8679 500 | 1 | CIRCUIT BOARD machine version outphased 2011 |
| 13 | 147 1119 500 | 1 | FLOAT BASKET ADAPTER |
| 14 | 140 8698 510 | 1 | HOLDER ACCESSORIES 32MM B |
| NI | 107402147 | 1 | LABEL KIT FOR US GWD MACHINES (US only) |
| NI | 140 9583 020 | 1 | CARTON GWD 335 |

Motor top one motor, GWD 350, GWD 375

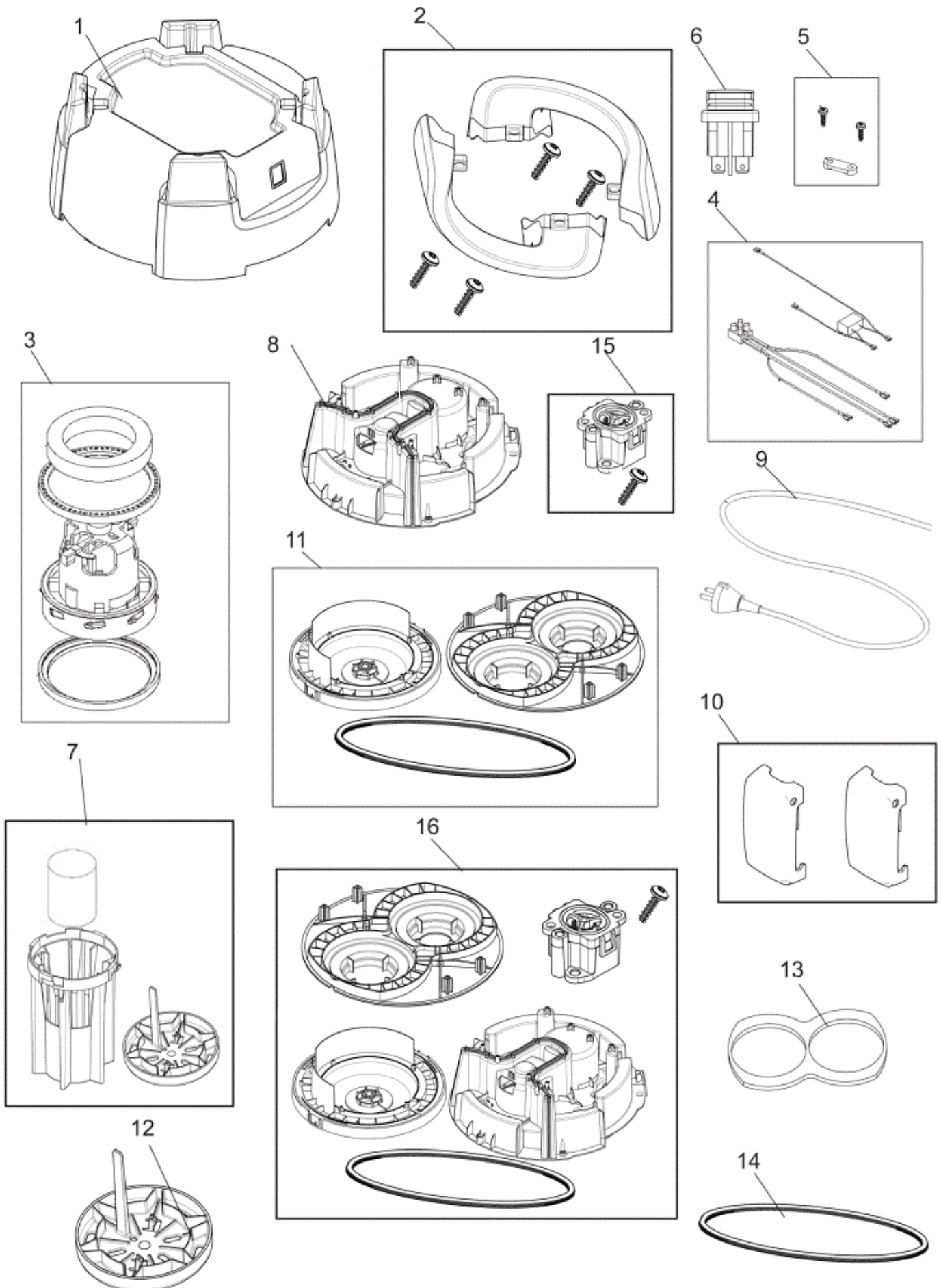
GWD 320 / 335 / 350 / 375

12-01-2014

Part List ID

B5939

9



Motor top one motor, GWD 350, GWD 375

GWD 320 / 335 / 350 / 375

12-01-2014

Part List ID

B5939

10

| Pos | Part no. | Qty | Description | |
|-----|--------------|-----|--|-------------------|
| 1 | 140 9533 500 | 1 | COVER OUTER GWD 350/375 1 FAN UNIT | |
| 2 | 140 9527 500 | 2 | HANDLE GWD 350/375 | |
| 3 | 140 8689 500 | 1 | FAN UNIT BYPASS 220-240V GWD320 GWD335 | |
| 3 | 140 8689 510 | 1 | FAN UNIT BP 1350W 100-120 | |
| 4 | 140 7620 500 | 1 | SUPPRESSOR EU/UK/AU/NZ | |
| 5 | 140 6560 500 | 1 | ANTI STRAIN CLIP | |
| 6 | 107404540 | 1 | SWITCH 0-1 DOUBLE POLE SET | |
| 7 | 140 8680 500 | 1 | FLOAT BASKET GWD 300 SERIES | |
| 8 | 140 9523 500 | 1 | COVER FAN UNIT GWD350/375 2 FAN UNITS | |
| 9 | 12003805 | 1 | CORD SET JP CPL. L 15M | |
| 9 | 12222501 | 1 | CORD SET EU L 10M | |
| 9 | 12222503 | 1 | CORD KIT UK 10M | |
| 9 | 12222506 | 1 | CORD SET AU/NZ L 10M | |
| 10 | 140 8691 500 | 2 | LATCHES DARK GREY 2 PCS GD 320, GWD 320, GWD 335 | |
| 11 | 140 9508 500 | 1 | CHASSIS GWD 350/375 1 FAN UNIT | 1-motor Grey |
| 11 | 140 9508 570 | 1 | CHASSIS GWD 350/375 2-MOTOR | 2-motor |
| 13 | 140 9529 500 | 1 | SOUND ABSORBER | |
| 14 | 140 9509 500 | 1 | GASGET FOR GWD 350/375 | |
| 15 | 147 1225 520 | 1 | VACUUM VALVE CPL | For 1350 Fan unit |
| 16 | 147 1448 500 | 1 | CONVERSION KIT GWD 350/375 | 1 motor grey |
| 16 | 147 1448 520 | 1 | CONVERSION KIT G | 1 motor greyUL |
| NI | 107402147 | 1 | LABEL KIT FOR US GWD MACHINES | (US only) |
| NI | 140 9588 000 | 1 | CARTON GWD 350 LINEDRAWING | BOX FOR RE-PACK |
| NI | 140 9588 010 | 1 | CARTON GWD 350 | BOX FOR RE-PACK |
| NI | 140 9589 000 | 1 | CARTON GWD 375 LINEDRAWING | BOX FOR RE-PACK |
| NI | 140 9589 010 | 1 | CARTON GWD 375 | BOX FOR RE-PACK |

Since the vacuum safety valve (Part number 147 1225 520) was introduced, an old motor cover could no longer be fitted with a new chassis and vice versa. Therefore the conversion kit (Item number 16) Part number 147 1448 5x0 are introduced. The conversion kit contains all the necessary parts to rebuild the motor tops to the new design. After this modification the machine will be according to the new updated specs with safety valve and can be fitted with separately spare parts.

In other words, this modification needs only to be performed once.

Machines that are older than serial no.; 0803 067937 needs this modification to be able to fit a new part

Motor top two motor, GWD 350, GWD 37

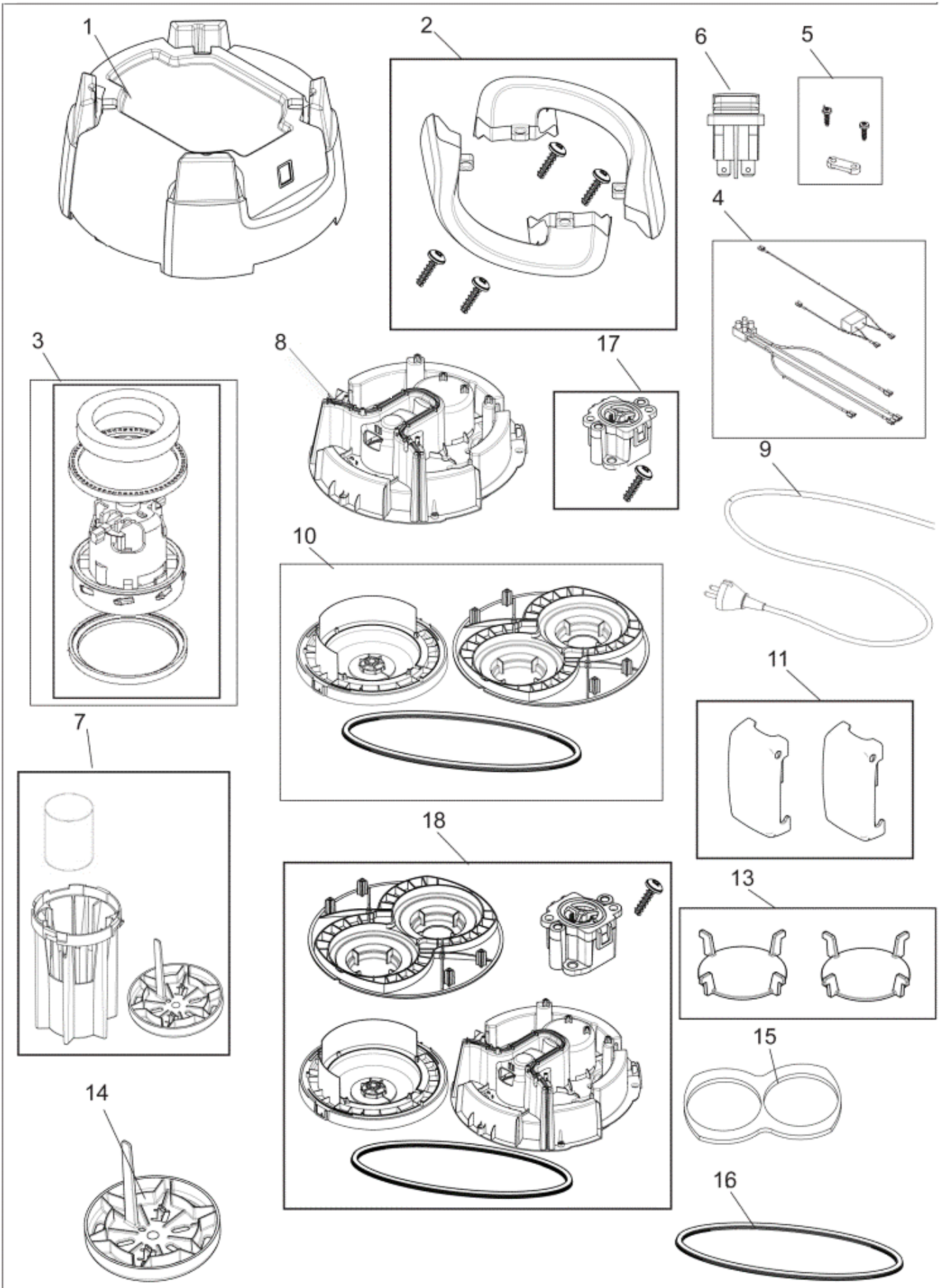
GWD 320 / 335 / 350 / 375

12-01-2014

Part List ID

B59311

11



Motor top two motor, GWD 350, GWD 375

GWD 320 / 335 / 350 /375

12-01-2014

Part List ID

B59311

12

| Pos | Part no. | Qty | Description | |
|-----|--------------|-----|--|--------------------|
| - | 107402147 | 1 | LABEL KIT FOR US GWD MACHINES | (US only) |
| 1 | 140 9531 500 | 1 | COVER OUTER GWD 350/375 2 FAN UNITS | |
| 2 | 140 9527 500 | 2 | HANDLE GWD 350/375 | |
| 3 | 140 8689 500 | 1 | FAN UNIT BYPASS 220-240V GWD320 GWD335 | |
| 3 | 140 8689 510 | 1 | FAN UNIT BP 1350W 100-120 | |
| 4 | 140 7620 530 | 1 | SUPPRESSOR EU/UK/AU/NZ GWD 350-2/375-2 | |
| 5 | 140 6560 500 | 1 | ANTI STRAIN CLIP | |
| 6 | 107404540 | 2 | SWITCH 0-1 DOUBLE POLE SET | |
| 7 | 140 8680 500 | 1 | FLOAT BASKET GWD 300 SERIES | |
| 8 | 140 9523 500 | 1 | COVER FAN UNIT GWD350/375 2 FAN UNITS | |
| 9 | 12003805 | 1 | CORD SET JP CPL. L 15M | |
| 9 | 12222501 | 1 | CORD SET EU L 10M | |
| 9 | 12222503 | 1 | CORD KIT UK 10M | |
| 9 | 12222506 | 1 | CORD SET AU/NZ L 10M | |
| 10 | 140 9508 510 | 1 | CHASSIS GWD 350/375 2 FAN UNITS | 2-motor grey |
| 11 | 140 8691 500 | 2 | LATCHES DARK GREY 2 PCS GD 320, GWD 320, GWD 335 | |
| 13 | 140 9526 500 | 2 | VALVE DISC GWD 350/375 2 FAN UNITS | |
| 14 | 147 1119 500 | 1 | FLOAT BASKET ADAPTER | |
| 15 | 140 9529 500 | 1 | SOUND ABSORBER | |
| 16 | 140 9509 500 | 1 | GASGET FOR GWD 350/375 | |
| 17 | 147 1225 510 | 1 | VACUUM VALVE CPL. | For 1000W Fan unit |
| 17 | 147 1225 520 | 1 | VACUUM VALVE CPL | For 1350W Fan unit |
| 18 | 147 1448 510 | 1 | CONVERSION KIT GWD 350/375 | 2-motor |
| 18 | 147 1448 530 | 1 | CONVERSION KIT GWD 350/375 | 2-motor UL |

Since the vacuum safety valve (Part number 147 1225 520) was introduced, an old motor cover could no longer be fitted with a new chassis and vice versa. Therefore the conversion kit (Item number 18) Part number 147 1448 5x0 are introduced. The conversion kit contains all the necessary parts to rebuild the motor tops to the new design. After this modification the machine will be according to the new updated specs with safety valve and can be fitted with separately spare parts.

In other words, this modification needs only to be performed once.

Machines that are older than serial no.; 0803 067937 needs this modification to be able to fit a new part

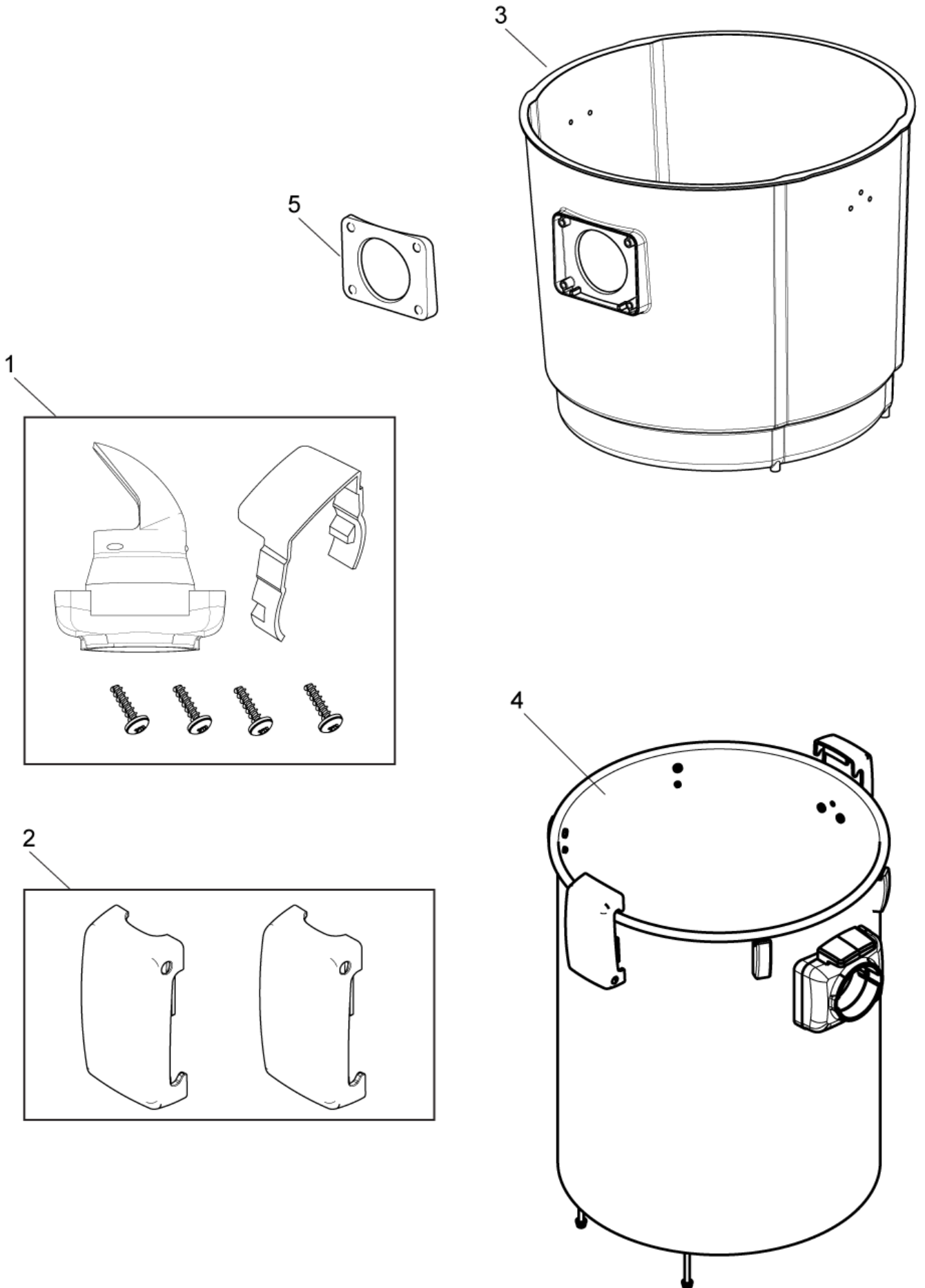
Container, GWD 320, GWD 335

GWD 320 / 335 / 350 / 375

12-01-2014

Part List ID
B59313

13



Container, GWD 320, GWD 335

GWD 320 / 335 / 350 /375

12-01-2014

Part List ID
B59313

14

| Pos | Part no. | Qty | Description |
|-----|--------------|-----|--|
| 1 | 140 7204 500 | 1 | INLET GWD 300-SERIES |
| 2 | 140 8691 500 | 2 | LATCHES DARK GREY 2 PCS GD 320, GWD 320, GWD 335 |
| 3 | 140 8660 500 | 1 | CONTAINER 20L GD 320, GWD 320 |
| 3 | 140 8672 500 | 1 | CONTAINER 35L GWD 335 |
| 4 | 147 1122 500 | 1 | CONTAINER 35L CPL STEEL D GREY |
| 5 | 107402899 | 1 | GASKET INLET KIT |

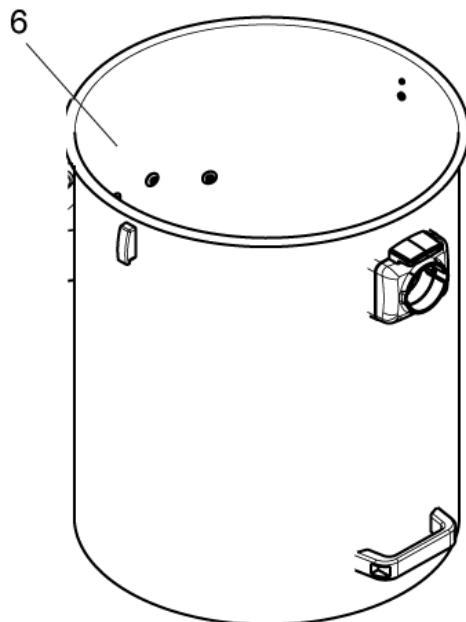
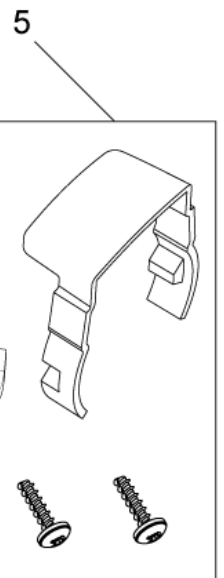
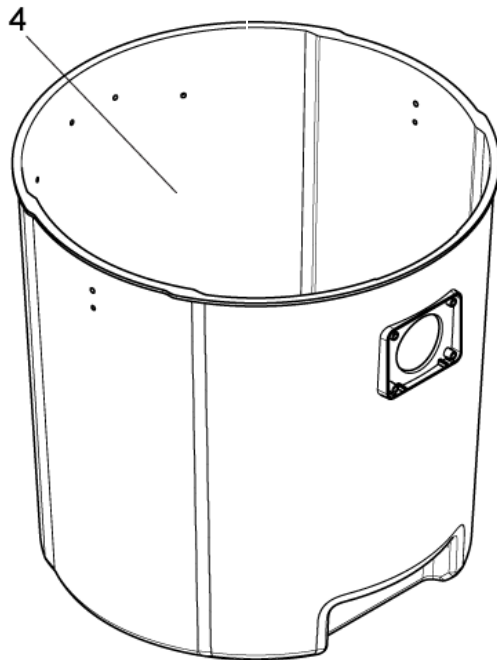
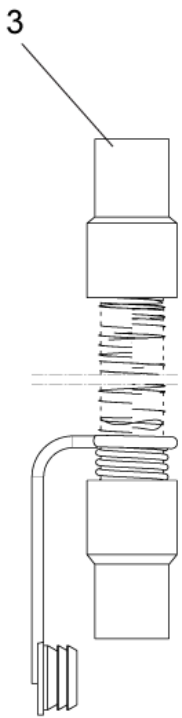
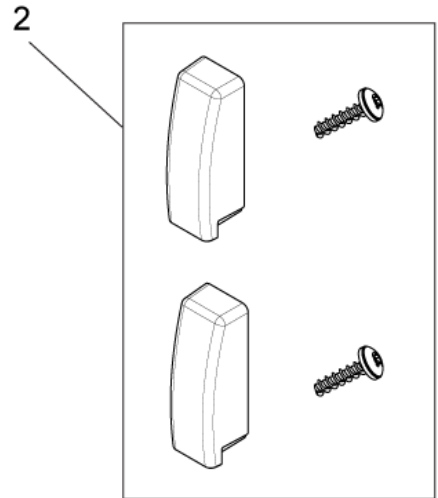
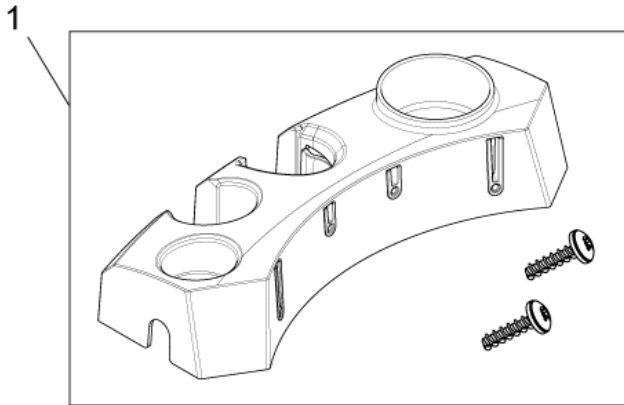
Container, GWD 350, GWD 375

GWD 320 / 335 / 350 / 375

12-01-2014

Part List ID
B59315

15



Container, GWD 350, GWD 375

GWD 320 / 335 / 350 /375

12-01-2014

Part List ID
B59315

16

| Pos | Part no. | Qty | Description |
|-----|--------------|-----|--|
| 1 | 140 9517 500 | 1 | BRACKET CONTAINER |
| 2 | 140 8685 500 | 2 | HOOK CONTAINER |
| 3 | 140 7604 500 | 1 | HOSE 32X530 GWD350/375 FOR DRAINING OUTLET |
| 4 | 140 9514 500 | 1 | CONTAINER 75L GWD 375 WITH DRAINING OUTLET |
| 4 | 140 9515 500 | 1 | CONTAINER 50L GWD 350 |
| 5 | 140 7204 500 | 1 | INLET GWD 300-SERIES |
| 6 | 147 1123 500 | 1 | CONTAINER 75L CPL STEEL D |
| 7 | 107402899 | 1 | GASKET INLET KIT |

Trolleys, GD 320, GWD 320, 335, 350, 375

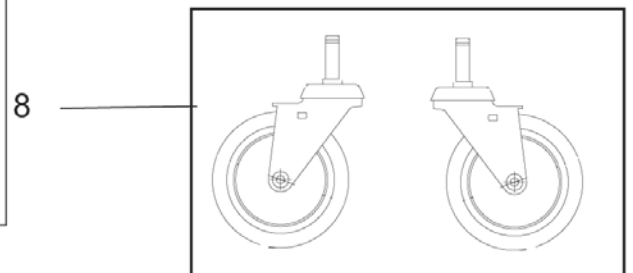
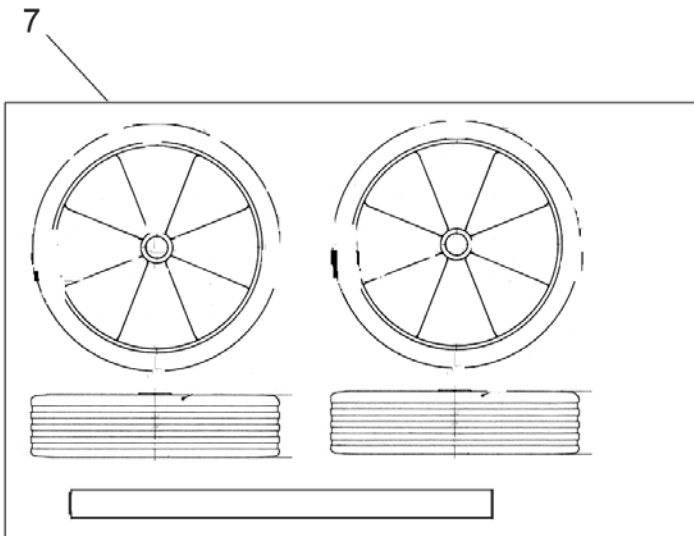
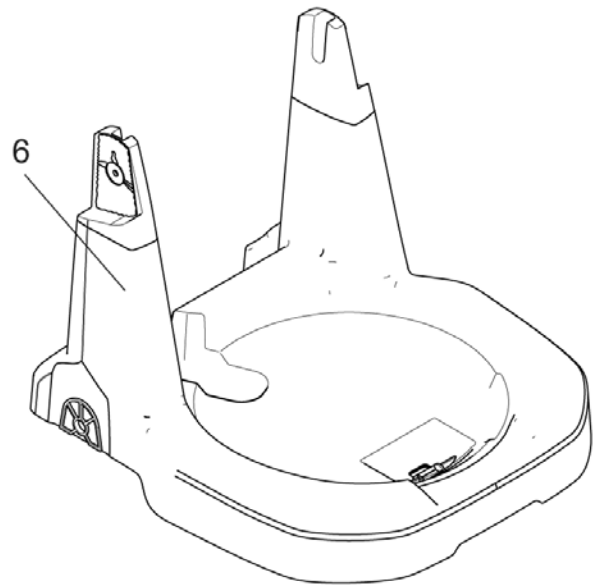
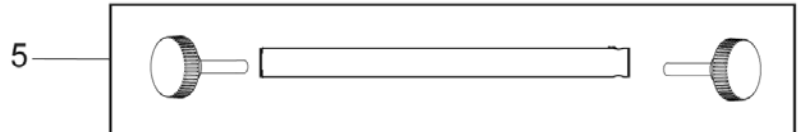
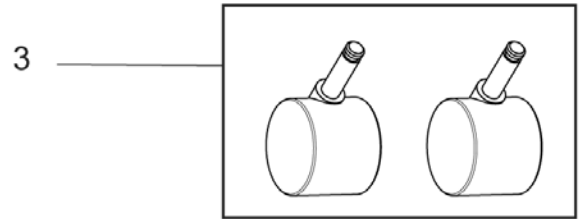
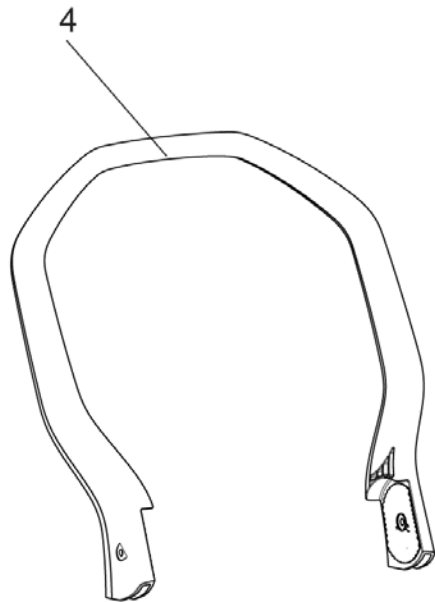
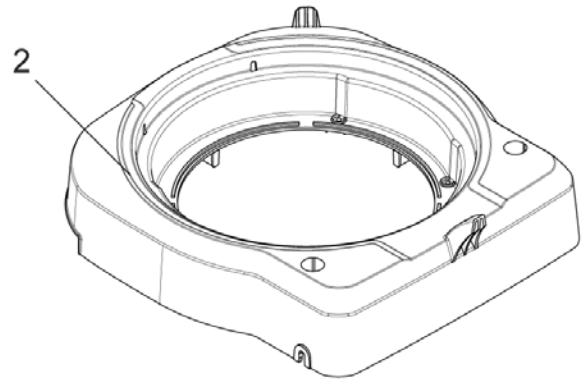
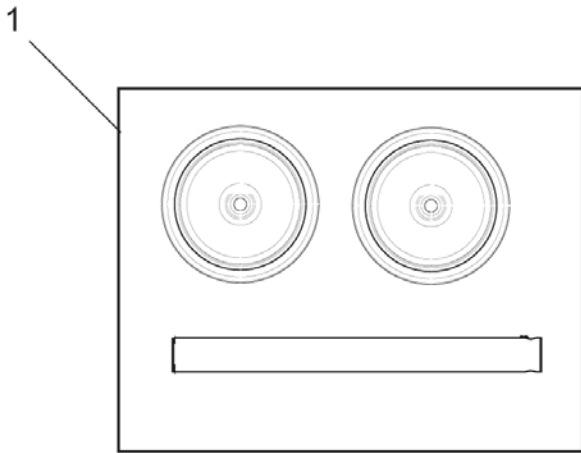
GWD 320 / 335 / 350 / 375

12-01-2014

Part List ID

B59317

17



Trolleys, GD 320, GWD 320, 335, 350, 375

GWD 320 / 335 / 350 /375

12-01-2014

Part List ID

B59317

18

| Pos | Part no. | Qty | Description |
|-----|--------------|-----|--|
| 1 | 140 8446 600 | 2 | WHEEL REAR 2 PCS GD 320, GWD 320, GWD 335 |
| 2 | 140 8662 500 | 1 | FRAME FOR TROLLEY GD 320, GWD 320, GWD 335 |
| 3 | 140 6422 500 | 2 | LINK WHEELS KIT 2 WHEELS |
| 4 | 140 9519 500 | 1 | HANDLE TROLLEY GWD 350 GWD 375 |
| 5 | 140 9544 500 | 1 | SHAFT GWD 350, GWD 375 |
| 6 | 140 9518 500 | 1 | FRAME FOR TROLLEY |
| 7 | 140 8156 500 | 2 | WHEEL TROLLEY 2 PCS GWD 350, GWD 375 |
| 8 | 140 5476 500 | 2 | WHEEL LINK TROLLEY 2-P GWD 350, GWD 375 |

Note:

Item 1 to 3 are related to: 320 GWD 320, GWD 335

Front nozzle, GWD 350, GWD 375 (EU-UK-AU/

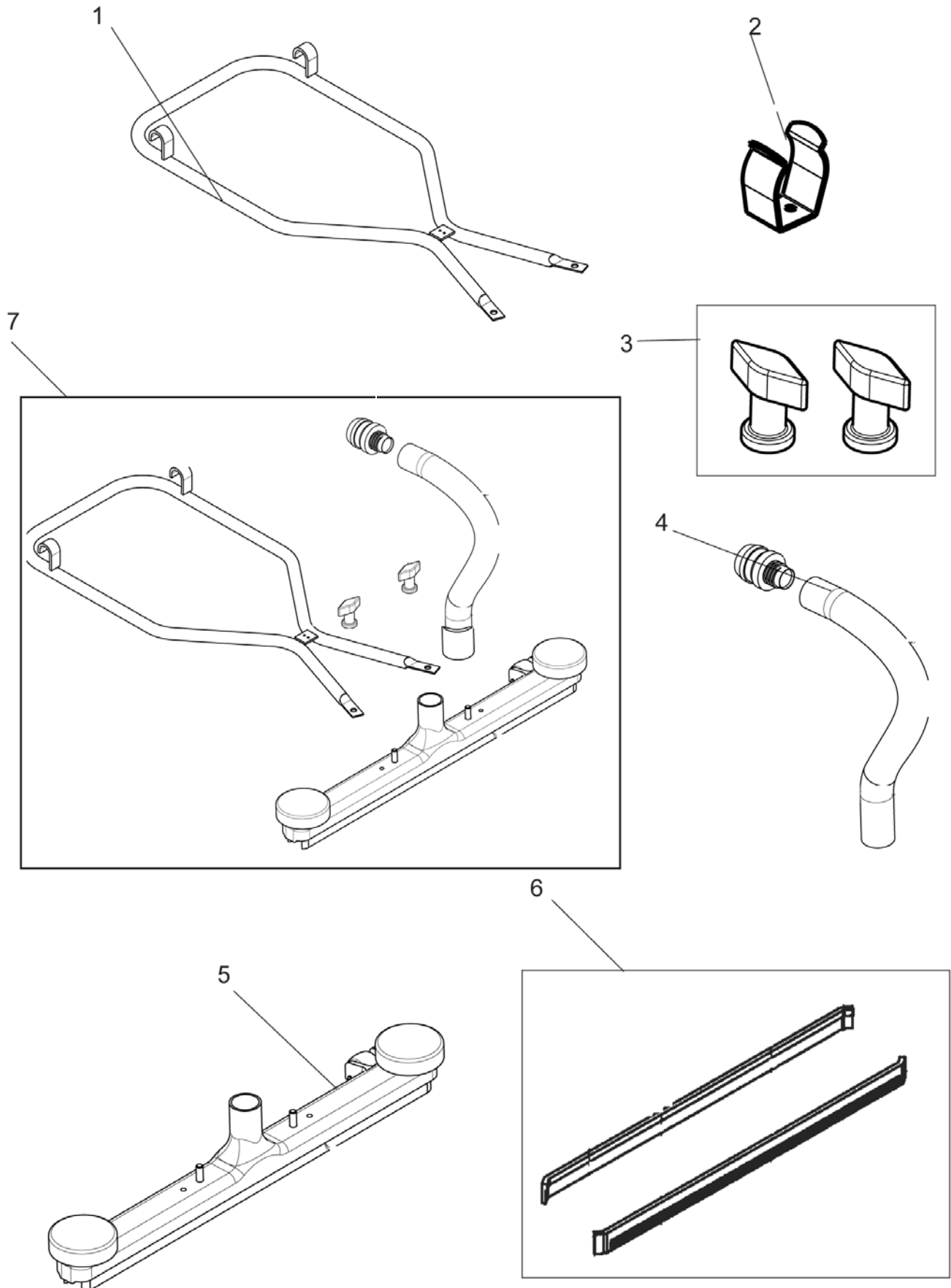
GWD 320 / 335 / 350 / 375

12-01-2014

Part List ID

B59319

19



Front nozzle, GWD 350, GWD 375 (EU-UK-AU/NZ)

GWD 320 / 335 / 350 /375

12-01-2014

Part List ID

B59319

20

| Pos | Part no. | Qty | Description |
|-----|--------------|-----|--|
| 1 | 140 9546 500 | 1 | FRAME F. FRONT NOZZLE GWD 350, GWD 375 |
| 2 | 140 9558 500 | 1 | CLAMP 22MM FRONT NOZZLE GWD 350/375 |
| 3 | 140 7947 500 | 2 | NUT,THUMB 5/16 FRONT NOZZLE GWD 350/375 |
| 4 | 140 2148 500 | 1 | HOSE D38 FOR FRONT NOZZLE L=500MM GWD350,GWD 375 |
| 5 | 56209088 | 1 | FIXED FLOOR NOZZLE GW NO HOSE |
| 6 | 56105533 | 2 | Blade_E00601 |
| 7 | 140 9556 500 | 1 | FRONT NOZZLE COMPL. GWD 350, GWD 375 |

Nozzles and hoses. All models

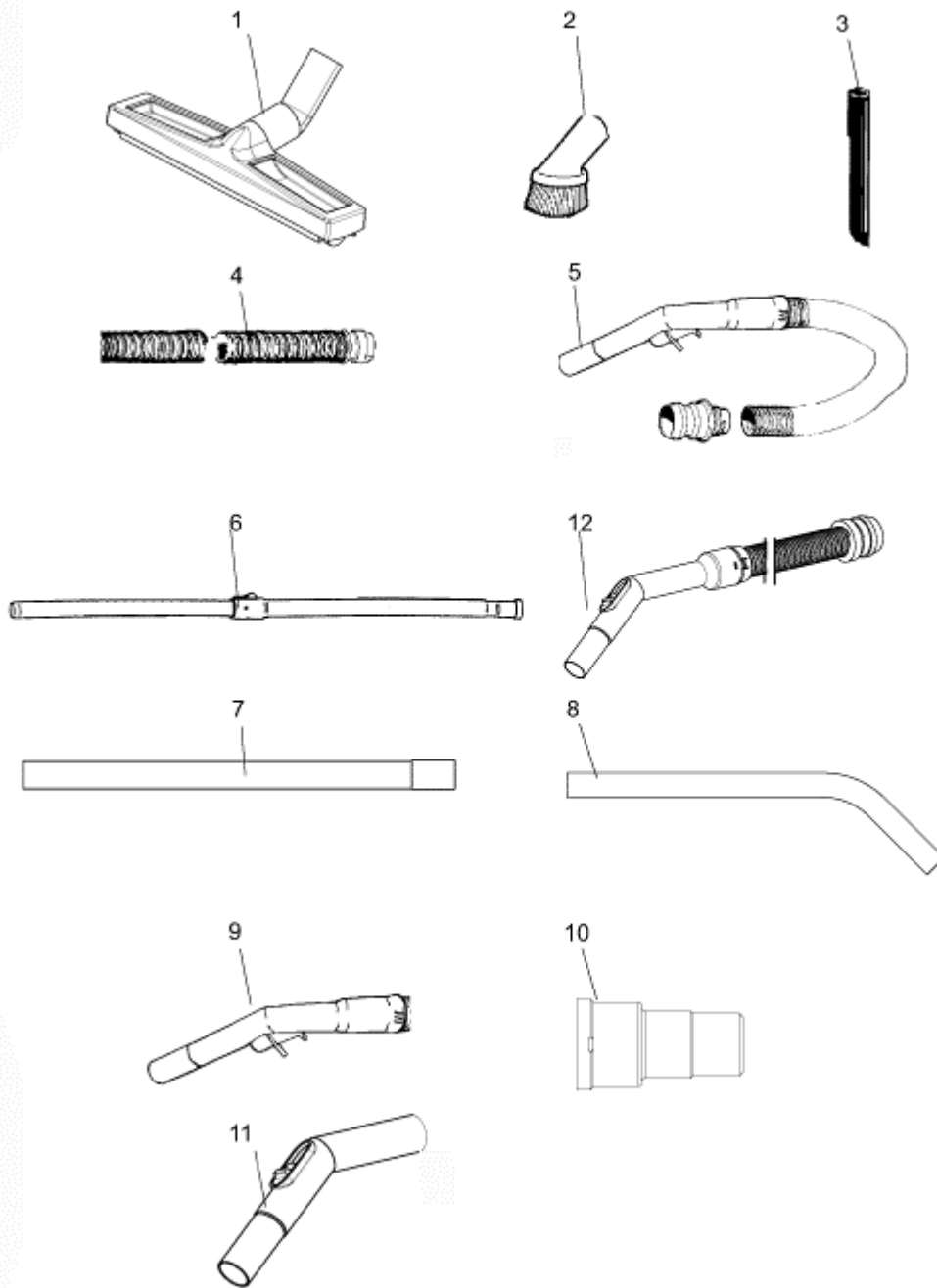
GWD 320 / 335 / 350 / 375

12-01-2014

Part List ID

B59321

21



Nozzles and hoses. All models

GWD 320 / 335 / 350 /375

12-01-2014

Part List ID
B59321

22

| Pos | Part no. | Qty | Description |
|-----|--------------|-----|--|
| 1 | 140 6700 000 | 1 | NOZZLE MULTI SURFACE, RUB BER (Japan) |
| 1 | 140 9598 500 | 1 | NOZZLE WET RUBB.STRIP D32 BLACK |
| 1 | 140 9598 510 | 1 | NOZZLE DRY BRUSH D32 BLACK |
| 1 | 140 9598 520 | 1 | NOZZLE WET D40 RUBBER STRIP BLACK |
| 1 | 140 9598 530 | 1 | NOZZLE DRY BRUSH D40 BLACK |
| 2 | 140 8244 500 | 1 | BRUSH NOZZLE KIT |
| 3 | 140 8012 500 | 1 | CREVICE NOZZLE K |
| 3 | 140 9599 500 | 1 | NOZZLE CREVICE D40 BLACK |
| 4 | 140 9595 500 | 1 | HOSE PLASTIC D40 W/COUPLING |
| 5 | 140 6430 500 | 1 | HOSE PLASTIC, D32 MM L 1 SNAP IN COUPLING, PLASTIC |
| 6 | 81906500 | 1 | TELESCOPIC TUBE 32MM MAX LENGTH 113CM |
| 7 | 140 8246 040 | 1 | STEEL TUBE 32MM X 500MM |
| 7 | 140 9597 500 | 1 | EXTENSION TUBE STEEL D40 BLACK L=500MM |
| 8 | 140 9596 500 | 1 | HOSE HANDLE STEEL D40 HANDLE FOR D40 HOSE |
| 9 | 140 7584 500 | 1 | HANDLE CPL. HOSE HANDLE FOR 32 MM HOS |
| 10 | 60916 | 1 | POWER TOOL ADAPTOR - AERO RANG |
| 11 | 147 1003 500 | 1 | BENT END D32 For Craftsman versions |
| 12 | 147 1002 500 | 1 | HOSE CPL GWD CRAFTSMAN |
| 6a | 81192100 | 1 | Tube ring 32mm plastic fits 11112401 only |
| 6a | 81948300 | 1 | RING F. TELESKOPR?R |

NOTE

Ø32 mm accessories for GD 320, GWD 320 GWD 335.

Ø40 mm accessories for GWD 350 and GWD 375.

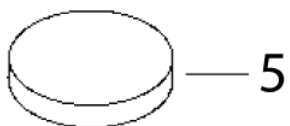
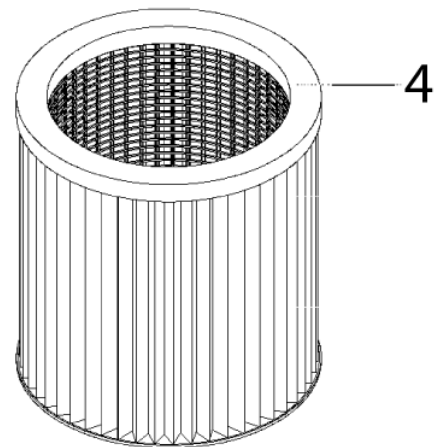
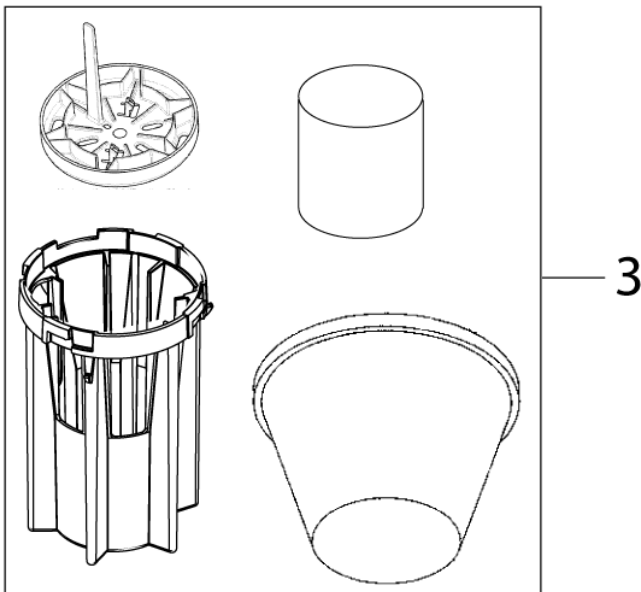
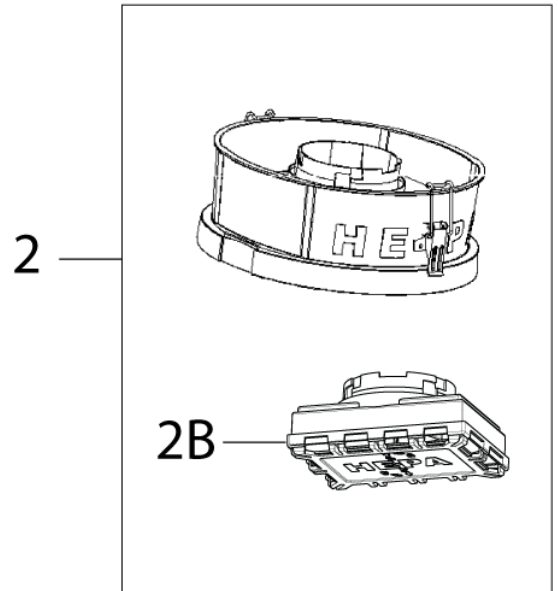
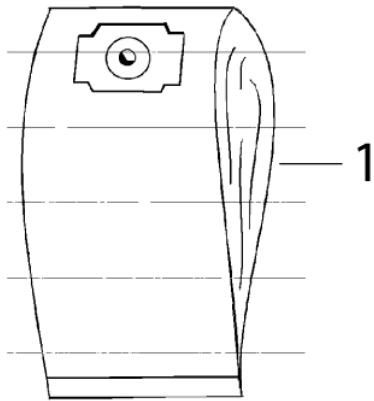
Filter and dustbags. All models

GWD 320 / 335 / 350 / 375

12-01-2014

Part List ID
B59323

23



Filter and dustbags. All models

GWD 320 / 335 / 350 /375

12-01-2014

Part List ID
B59323

24

| Pos | Part no. | Qty | Description | |
|-----|--------------|-----|---|------------------------------------|
| 1 | 147 0745 010 | 3 | DUST BAG SELF CLOSE 3 PCS GWD 320/335 | |
| 1 | 147 0746 010 | 3 | DUST BAG SELF CLOSE 3 PCS GWD 350/350-2/375/375-2 | |
| 2 | 140 8670 500 | 1 | COVER HEPA GWD 320/335 DARK GREY | Not for model 350 and 375 |
| 3 | 140 8658 500 | 1 | FILTER SACK GD 320/GWD300 SERIES | Wet & Dry filter, for GWD 320, 335 |
| 3 | 140 8658 510 | 1 | FILTER SACK GD 320 | Dry filter, for GD 320 |
| 3 | 140 8658 520 | 1 | FILTER SACK NYLON CPL GWD 300 | Nylon filter, for GWD 320, 335 |
| 3 | 140 8658 530 | 1 | FILTER SACK WET GWD MAXXI GWD320 / 335 | Wet filter, for GWD 320, 335 |
| 3 | 140 9512 500 | 1 | FILTER SACK GWD 350/375 | Wet & Dry filter, for GWD 350, 375 |
| 3 | 140 9512 510 | 1 | FILTER SACK WET GWD/MAXXI GWD 350 / 375 | Wet filter, for GWD 350, 375 |
| 4 | 140 8686 500 | 1 | FILTER CARTRIDGE GD 320, GWD 300-SERIES | |
| 5 | 140 8682 500 | 1 | MOTOR FILTER GD 320/GWD 300 SERIES | |
| 2B | 140 8678 500 | 1 | FILTER HEPA CPL. | |

RECOMMENDED SPARE PARTS

GWD 320 / 335 / 350 /375

12-01-2014

Part List ID

B59325

25

No Drawing For Part List

RECOMMENDED SPARE PARTS

GWD 320 / 335 / 350 /375

12-01-2014

Part List ID

B59325

26

| Pos | Part no. | Qty | Description |
|-----|--------------|-----|--|
| 0 | 107401614 | 1 | CORD SET US/TW 3C 15.5M YELLOW |
| 0 | 107402899 | 1 | GASKET INLET KIT |
| 0 | 107404540 | 1 | SWITCH 0-1 DOUBLE POLE SET |
| 0 | 12003805 | 1 | CORD SET JP CPL. L 15M |
| 0 | 12222501 | 1 | CORD SET EU L 10M |
| 0 | 12222503 | 1 | CORD KIT UK 10M |
| 0 | 12222506 | 1 | CORD SET AU/NZ L 10M |
| 0 | 140 5476 500 | 1 | WHEEL LINK TROLLEY 2-P GWD 350, GWD 375 |
| 0 | 140 5669 500 | 1 | CORD SET EU 10.5M |
| 0 | 140 6422 500 | 1 | LINK WHEELS KIT 2 WHEELS |
| 0 | 140 6777 500 | 1 | CORD SET UK 10M |
| 0 | 140 7042 500 | 1 | WIRE, INTERNAL FOR GWD 300 |
| 0 | 140 7204 500 | 1 | INLET GWD 300-SERIES |
| 0 | 140 7947 500 | 1 | NUT, THUMB 5/16 FRONT NOZZLE GWD 350/375 |
| 0 | 140 8156 500 | 1 | WHEEL TROLLEY 2 PCS GWD 350, GWD 375 |
| 0 | 140 8446 600 | 1 | WHEEL REAR 2 PCS GD 320, GWD 320, GWD 335 |
| 0 | 140 8677 500 | 1 | SWITCH CRAFTSMAN |
| 0 | 140 8679 500 | 1 | CIRCUIT BOARD |
| 0 | 140 8680 500 | 1 | FLOAT BASKET GWD 300 SERIES |
| 0 | 140 8685 500 | 1 | HOOK CONTAINER |
| 0 | 140 8689 500 | 1 | FAN UNIT BYPASS 220-240V GWD320 GWD335 |
| 0 | 140 8689 510 | 1 | FAN UNIT BP 1350W 100-120 |
| 0 | 140 8689 520 | 1 | FAN UNIT BP 1000W 100-120V |
| 0 | 140 8690 500 | 1 | ELECTRICAL OUTLET F/EU-PL UG |
| 0 | 140 8690 510 | 1 | ELECTRIC OUTLET F/UK-PLUG |
| 0 | 140 8690 520 | 1 | ELECTRIC OUTLET F/AU/NZ PLUG |
| 0 | 140 8691 500 | 1 | LATCHES DARK GREY 2 PCS GD 320, GWD 320, GWD 335 |
| 0 | 140 9508 510 | 1 | CHASSIS GWD 350/375 2 FAN UNITS |
| 0 | 140 9509 500 | 1 | GASGET FOR GWD 350/375 |
| 0 | 147 1042 010 | 1 | CORD SET CHINA 12.5M |
| 0 | 147 1225 510 | 1 | VACUUM VALVE CPL. |
| 0 | 147 1225 520 | 1 | VACUUM VALVE CPL |
| 0 | 147 1448 500 | 1 | CONVERSION KIT GWD 350/375 |
| 0 | 147 1448 510 | 1 | CONVERSION KIT GWD 350/375 |
| 0 | 147 1448 520 | 1 | CONVERSION KIT G |
| 0 | 147 1448 530 | 1 | CONVERSION KIT GWD 350/375 |