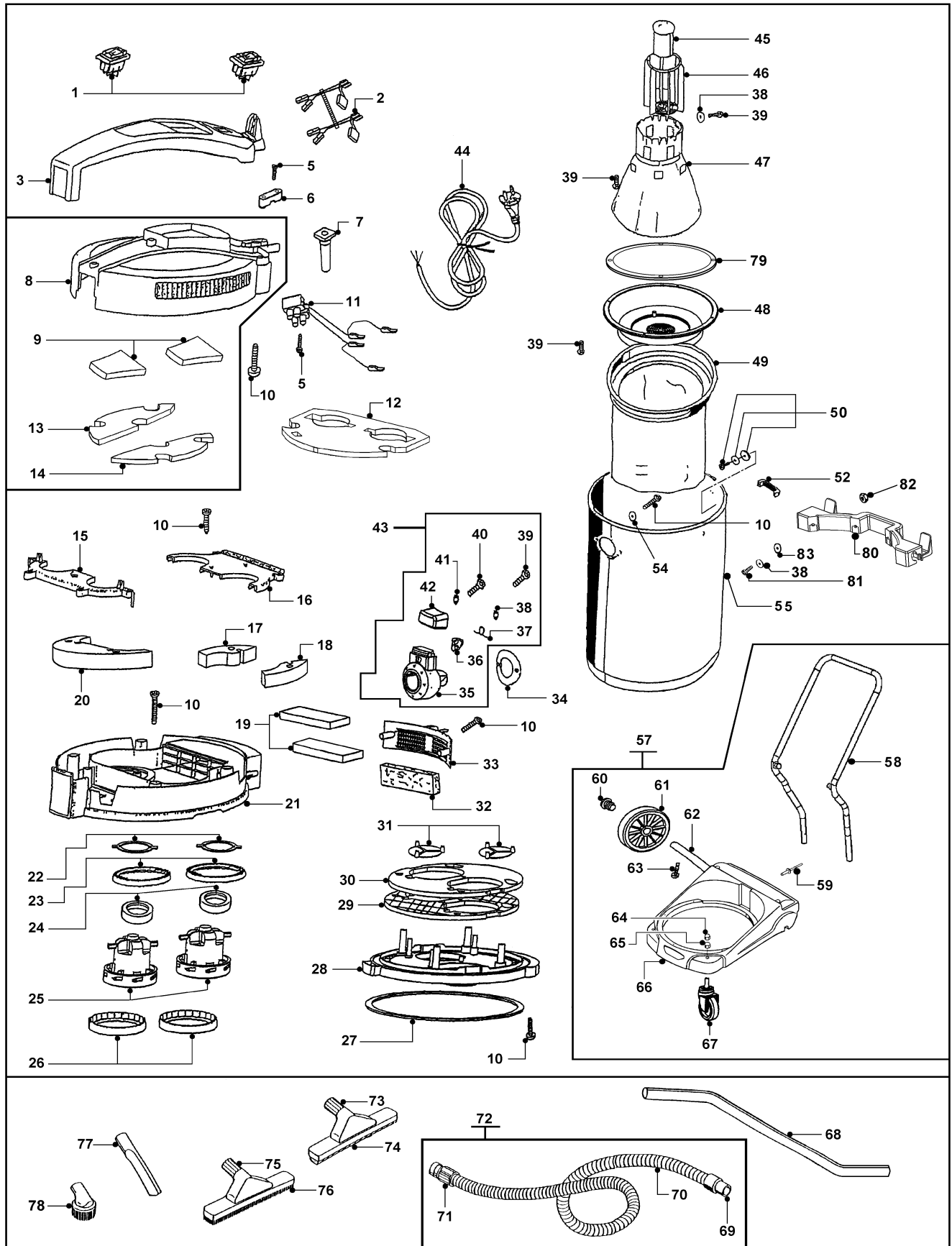


AS 12 CBN P GH EXP GIA/GRI

14834010001



| | |
|-----------------------------------|--------------------|
| AS 12 CBN P GH EXP GIA/GRI | 14834010001 |
|-----------------------------------|--------------------|

| POS. | DESCRIZIONE | Q.tà | COD. | NOTE |
|------|----------------------------------|------|---------|------|
| 1 | INTERRUTTORE B4 MASK ROSSO | 2 | 2506252 | |
| 2 | TRECCIOLA CABL.MOTORE AS 12 | 1 | 3005038 | |
| 3 | MANIGLIA AS 12 GRIGIA | 1 | 2200920 | |
| 5 | VITE TCC 3X20 SP | 3 | 2508500 | |
| 6 | BLOCCACAVO A PONTICELLO | 1 | 2001340 | |
| 7 | PASSACAVO GRIGIO | 1 | 2502000 | |
| 8 | GR.CALOTTA AS 12 GIA+FIREFLEX | 1 | 6480310 | |
| 9 | FIREFLEX ADES.ANT.CALOTTA AS 12 | 2 | 3000110 | |
| 10 | VITE TCC 5X22 CP | 20 | 2508591 | |
| 11 | MORSETTO 2 POLI X ALIM.AS 12 | 1 | 6100259 | |
| 12 | FIREFLEX MOTORE AS 12 | 1 | 3000106 | |
| 13 | FIREFLEX SX ADES.CALOTTA AS 12 | 1 | 3000103 | |
| 14 | FIREFLEX DX ADES.CALOTTA AS 12 | 1 | 3000109 | |
| 15 | COPERCHIO ANT.MOT. AS 12 NERO | 1 | 2200950 | |
| 16 | COPERCHIO POST.MOT.AS 12 NERO | 1 | 2200955 | |
| 17 | FIREFLEX POST.SX SEPARAT. AS 12 | 1 | 3000142 | |
| 18 | FIREFLEX POST.DX SEPARAT. AS 12 | 1 | 3000107 | |
| 19 | FIREFLEX SCARICO MOT.AS 12 BUGN. | 2 | 3000104 | |
| 20 | FIREFLEX SUPER.SEPARATORE AS 12 | 1 | 3000108 | |
| 21 | SEPARATORE AS 12 GRIGIO | 1 | 2200970 | |
| 22 | GUARNIZ.AD.AN. INTERM.TWINVAC | 2 | 3000088 | |
| 23 | GUARNIZIONE SUPER.MOTORE | 2 | 2502511 | |
| 24 | ANELLO POLIURET. MOTORE AS 12 | 2 | 3000012 | |
| 25 | MOTORE W.CUP 1200W 240V AS7/8 | 2 | 2505327 | |
| 26 | GUARNIZ.SUP.MOTORE MONOVAC 6 | 2 | 2502516 | |
| 27 | GUARNIZIONE BASAMENTO BWS2 | 1 | 2502410 | |
| 28 | BASAMENTO MOTORE AS 12 GRIGIO | 1 | 2200930 | |
| 29 | FIREFLEX BAS.MOT. AS 12 BUGNATO | 1 | 3000101 | |
| 30 | FIREFLEX BAS.MOT.AS 12 POLITENE | 1 | 3000102 | |
| 31 | VALVOLA DUOVAC 50 PP | 2 | 2201362 | |
| 32 | FILTRO POST.SCARICO MOT. AS 12 | 1 | 3000105 | |
| 33 | COPERCHIETTO POST.AS 12 GIALLO | 1 | 2200940 | |
| 34 | GUARNIZIONE BOCCHETTONE AS7 | 1 | 2502552 | |
| 35 | BOCCHETTONE ANTER.AS 7 GRIGIO | 1 | 2207784 | |
| 36 | TASTO BOCCHETTONE AS 7 NERO | 1 | 2501174 | |
| 37 | MOLLA PER BOCCHETTONE AS 7 | 1 | 2500929 | |
| 38 | RONDELLA D.6X24X1 ZINCATA | 14 | 2509030 | |
| 39 | VITE TCC 5X16 SP | 9 | 2508570 | |
| 40 | VITE TCC 5X13 SP | 1 | 2508560 | |
| 41 | ROSETTA ELASTICA A VENT. M6 | 1 | 2509025 | |
| 42 | COPERT. SUP.BOCCHETT.AS 9 GRIGIO | 1 | 2207899 | |
| 43 | BOCCHETTONE ANT.AS 9 GRI. CMP. | 1 | 6000203 | |
| 44 | CAVO 2X1,5 GRI.MT.10 EXP | 1 | 2507205 | |
| 45 | GALLEGGIANTE COMPLETO M 7 | 1 | 6101106 | |
| 46 | CESTELLO GALLEGG. AS 27 NERO | 1 | 2000090 | |
| 47 | CONO TENDIFILTRO AS 580 NERO | 1 | 2000095 | |
| 48 | CONVOGLIATORE AS 12 NERO | 1 | 2200960 | |

| |
|--|
| |
|--|

