



# PARTS LIST

## FLOOR MACHINE

### VE 17P-EU



english Spare Part List..... 1-6

Company information:  
[www.vipercleaning.eu](http://www.vipercleaning.eu)  
[info-eu@vipercleaning.com](mailto:info-eu@vipercleaning.com)



**DESCRIPTION****PLAN**

Parts List

2 - 5

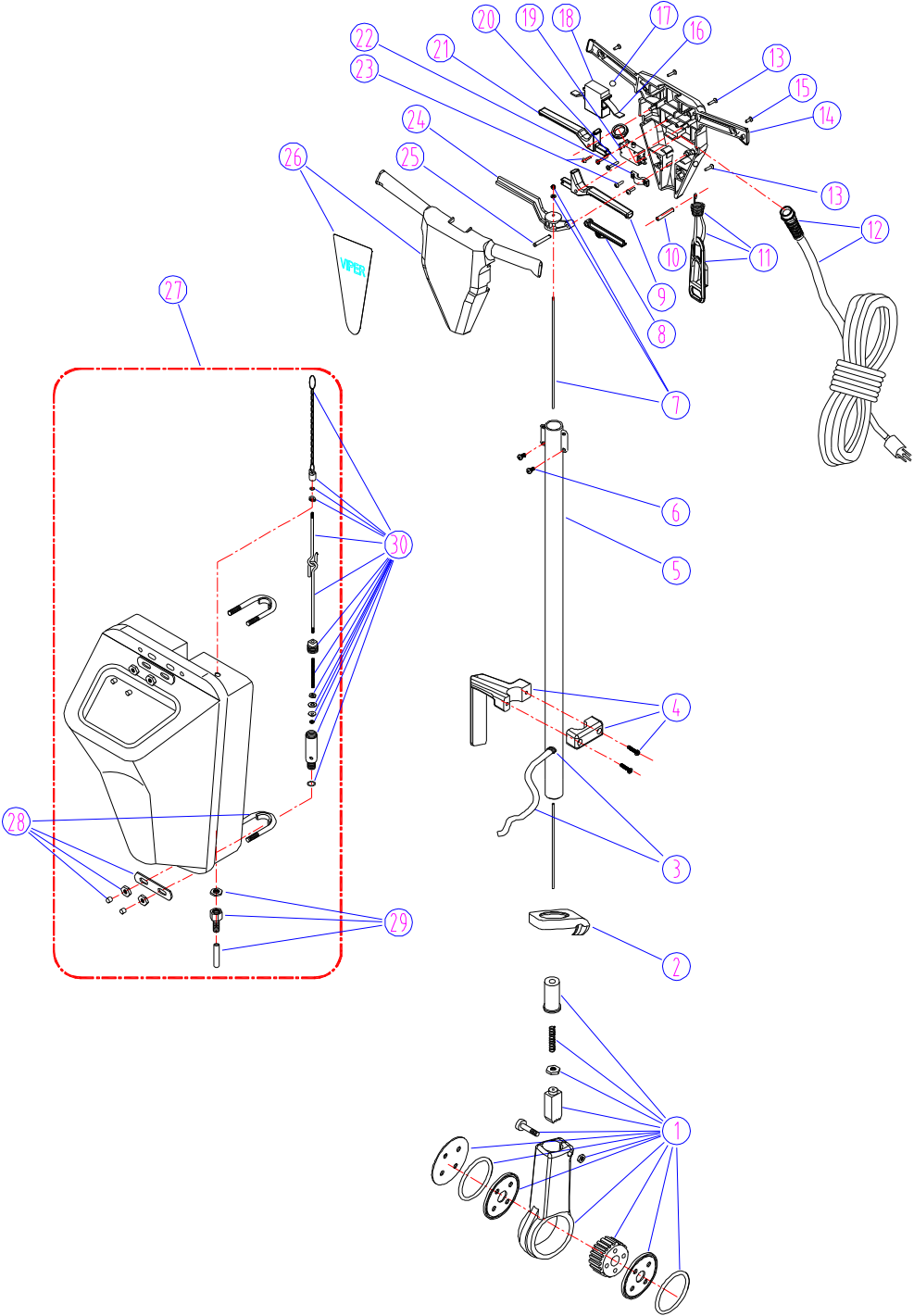
Wear and Tear Parts

6

**WHEN ORDERING PARTS**

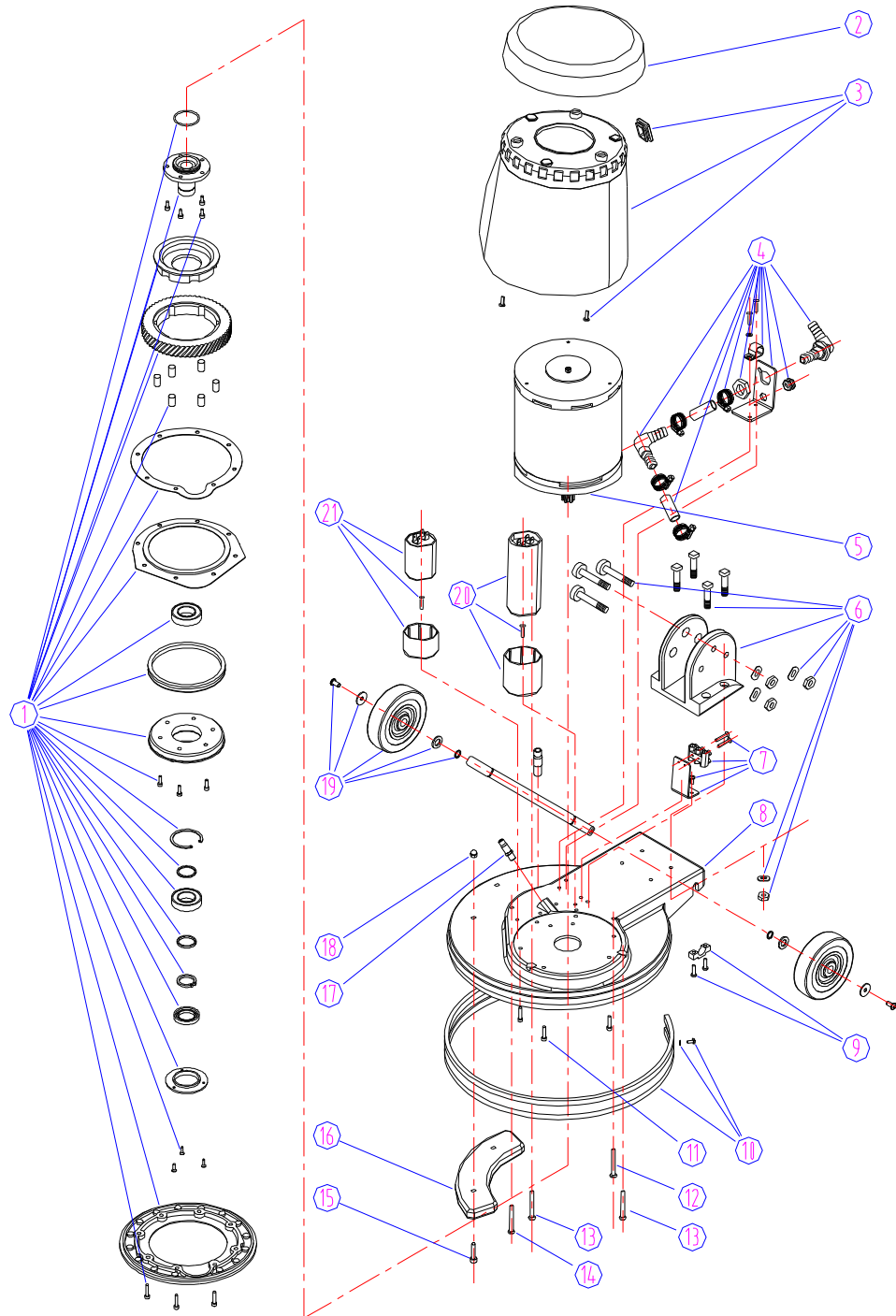
- \* Use the 7, 8 or 9 digit part numbers from the “part number” columns in this parts list.
- \* Specify the model and serial number of the machine.
- \* Use the space below to record the model and the serial Number for future reference.

**Model**\_\_\_\_\_**Serial No.**\_\_\_\_\_



## HANDLE GROUP FOR VE17P-EU

| DIA NO | PART NO   | DESCRIPTION   | NO REQ'D |
|--------|-----------|---|----------|
| 1      | VF40104EU | SEAT KIT EXTREME INCL. COVER & GEAR & O RING & WASHER & INSERT & NUT & SPRING | 1        |
| 2      | GV40241   | SEAL  | 1        |
| 3      | VF72724A  | CORD KIT EXTREME INCL. GROMMET  | 1        |
| 4      | VF50122EU | COVER FOR HOOK KIT EXTREME INCL. HOOK & SCREW                                 | 1        |
| 5      | VF40117   | TUBE STEEL Ø32  | 1        |
| 6      | GT13054   | SCREW PAN HEAD M5X12  | 2        |
| 7      | GV40220EU | ROD LEVELING KIT EXTREME INCL. NUT & WASHER                                   | 1        |
| 8      | GV40213B  | LEVER FOR SOLUTION  | 1        |
| 9      | VF73703   | LEVER LEFT SWITCH   | 1        |
| 10     | GV40223   | PIN Ø3  | 1        |
| 11     | GV40222A  | ELASTIC CORD KIT EXTREME INCL. CORD WARP & SPRING & CLAP                      | 1        |
| 12     | VF45118EU | POWER CORD EU PLUG KIT EXTREME INCL. STRAIN RELIEF                            | 1        |
|        | VF45118UG | POWER CORD UK PLUG KIT EXTREME INCL. STRAIN RELIEF                            | 1        |
| 13     | GT13009   | SCREW FLAT HEAD M5X30   | 6        |
| 14     | VF73701   | REAR COVER  | 1        |
| 15     | GT13008   | SCREW FLAT HEAD M5X20   | 2        |
| 16     | GV40218   | SPRING FOR SAFETY BUTTON  | 1        |
| 17     | VF72723   | STEEL BALL Ø10  | 1        |
| 18     | GV40209   | SAFETY BOTTON   | 1        |
| 19     | VF44203   | SWITCH ASSY   | 1        |
| 20     | GT13011   | SCREW PAN HEAD ST3X25   | 2        |
| 21     | VF73704   | LEVER RIGHT FOR SWITCH  | 1        |
| 22     | VF48309   | CLAMP BLOCK   | 1        |
| 23     | VV13667   | SCREW PAN HEAD M4X8   | 3        |
| 24     | GV40210B  | LEVELING HANDLE   | 1        |
| 25     | VF48306   | PIN Ø6  | 4        |
| 26     | VF73702A  | FRONT COVER KIT EXTREME INCL. LOGO  | 1        |
| 27     | VF001     | SOLUTION TANK ASSY  | 1        |
| 28     | VF40141A  | CLAMP PLATE KIT EXTREME INCL. GASKET & BOLT & NUT & CAP                       | 2        |
| 29     | VF40132A  | BARB FOR HOSE KIT EXTREME INCL. HOSE & NUT                                    | 1        |
| 30     | VF40131EU | VALVE BODY KIT EXTREME INCL. SEAL & SPRING & SEAT CHAIN & PULLING ROD         | 1        |



## BASE GROUP FOR VE17P-EU

| DIA NO | PART NUMBER | DESCRIPTION  | NO REQ'D |
|--------|-------------|--|----------|
| 1      | VF46107EU   | CLUTCH PLATE KIT EXTREME INCL. SCREW & ALU COVER & BEARING & SPACER & GEAR & SHAFT | 1        |
| 2      | VF72122     | TOP COVER  | 1        |
| 3      | VF72121E    | COVER KIT EXTREME INCL. BLOCK & SCREW  | 1        |
| 4      | VF72126EU   | BRACKET KIT EXTREME INCL. ELBOW & CLAMP & GROMMET & TUBE & SCREW                   | 1        |
| 5      | YCQ16000N   | MOTOR 220-240V 50-60HZ 1HP   | 1        |
| 6      | GV40240E    | MOUNTING BASE KIT EXTREME INCL. WASHER & NUT & TERNIMAL BLOCK                      | 1        |
| 7      | VF72125EU   | BRACKET KIT EXTREME INCL. TERNIMAL BLOCK & SCREW                                   | 1        |
| 8      | VF72201NE   | FRAME 17 INCH  | 1        |
| 9      | VF46120EU   | AXLE KIT EXTREME INCL. CLAMP BLOCK & SELF-TAPPING SCREW                            | 1        |
| 10     | VF46118EU   | BUMPER KIT EXTREME INCL. SCREW & WASHER  | 1        |
| 11     | GT13053     | HEX SCREW M6 X 25  | 6        |
| 12     | GT13027     | SCREW PAN HEAD M5X45   | 1        |
| 13     | VF14112     | SCREW PAN HEAD M5X38   | 2        |
| 14     | VF14305     | SCREW PAN HEAD M5X60   | 1        |
| 15     | VF14067     | SCREW SOCKET RECESS HEAD M8X25   | 2        |
| 16     | VF46131     | IRON BAR   | 1        |
| 17     | VF40152     | BARB HOSE  | 2        |
| 18     | VA13490     | CROWN NUT M8   | 2        |
| 19     | VF99004EU   | WHEEL KIT EXTREME INCL. RETAINING RING & WAVING WASHER                             | 1        |
| 20     | VF72124A    | HOLDER KIT EXTREME INCL. SCREW & START-UP CAPACITOR 100UF/300V                     | 1        |
| 21     | VF72123A    | HOLDER KIT EXTREME INCL. SCREW & RUNNING CAPACITOR 10UF/500V                       | 1        |

## WEAR AND TEAR PARTS

| DIA<br>NO | PART<br>NO | DESCRIPTION   | NO<br>REQ'D |
|-----------|------------|---|-------------|
| 1         | VF45118EU  | POWER CORD EU PLUG KIT EXTREME INCL. STRAIN<br>RELIEF                                 | 1           |
| 2         | VF45118UG  | POWER CORD UK PLUG KIT EXTREME INCL. STRAIN<br>RELIEF                                 | 1           |
| 3         | VF44203    | SWITCH ASSY   | 1           |
| 4         | VF99004EU  | WHEEL KIT EXTREME INCL. RETAINING RING &<br>WAVING WASHER                             | 1           |
| 5         | VF72124A   | HOLDER KIT EXTREME INCL. SCREW & START-UP<br>CAPACITOR 100UF/300V                     | 1           |
| 6         | VF72123A   | HOLDER KIT EXTREME INCL. SCREW & RUNNING<br>CAPACITOR 10UF/500V                       | 1           |
| 7         | VF46107EU  | CLUTCH PLATE KIT EXTREME INCL. SCREW & ALU<br>COVER & BEARING & SPACER & GEAR & SHAFT | 1           |
| 8         | YCQ16000N  | MOTOR 220-240V 50-60HZ 1HP  | 1           |
| 9         | VF003      | 17 INCH BRUSH   | 1           |
| 10        | VF021      | 16 INCH PAD DRIVER  | 1           |