

Preisabfragen und Bestellungen der Artikel im Shop unter

www.wapalto-shop.de

(einfach Artikelnummer in die Suchmaske eingeben)

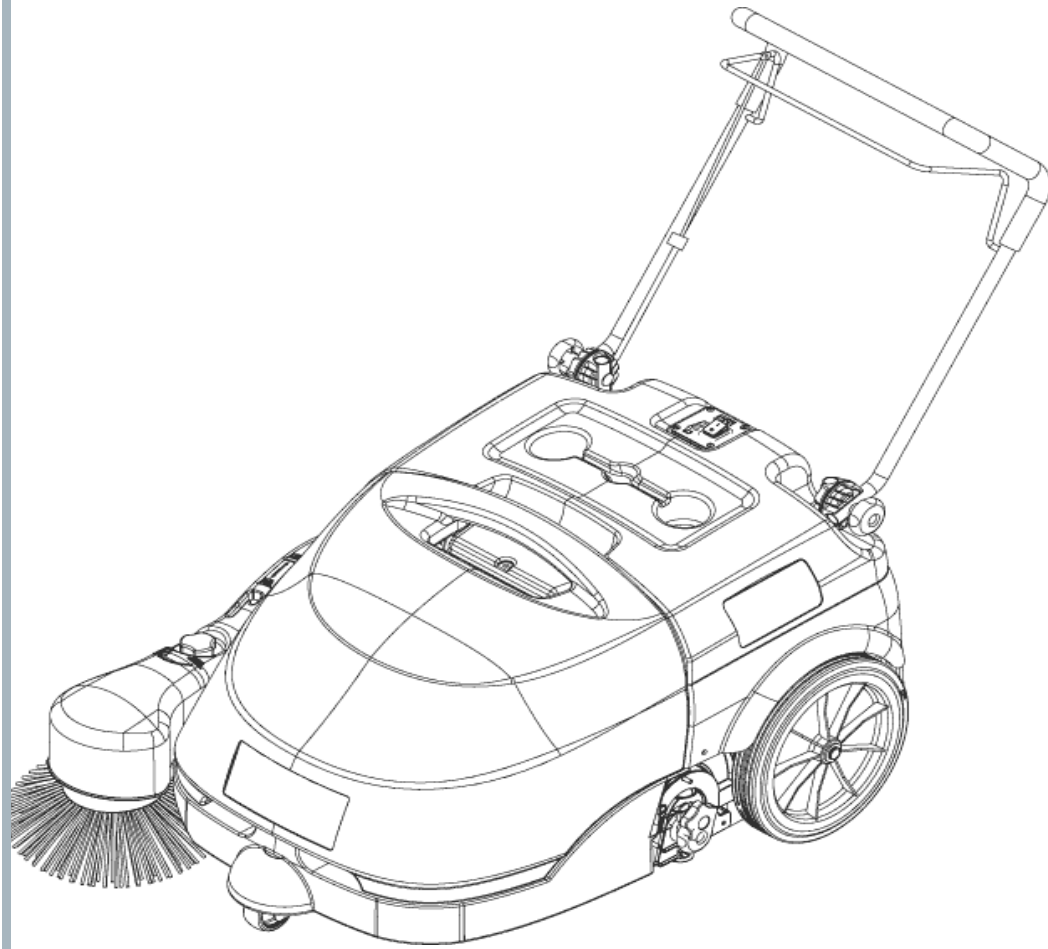
oder per Fax unter 0049 (0)7351 – 575801

Heine Vertriebs-GmbH WAP-ALTO Reinigungssysteme
Mettenbergerstr. 4
D-88400 Biberach/Riss

Sitz: D-88400 Mettenberg, Mettenbergerstr. 4
Amtsgericht Biberach/Riß HRB 641174 Landgericht Ravensburg,
Geschäftsführer: Jürgen Heine Dipl.-Ing (FH)
Steuernummer: 54 003 31698 FA Biberach

FLOORTEC 350

Model:
FLOORTEC 350



Part List US-English

21-10-2009

Table of Contents

FLOORTEC 350

General view	3
Chassis system	5
Side broom assembly	7
Hopper system	9
Transmission	11
Right and left hatch assemblies	13
Belt tensioner assemblies	15
Dust control system	17
Vacuum system and filter assembly	19
Control panel system	21
Wiring diagram	23
Recommended spare parts and accessories	25

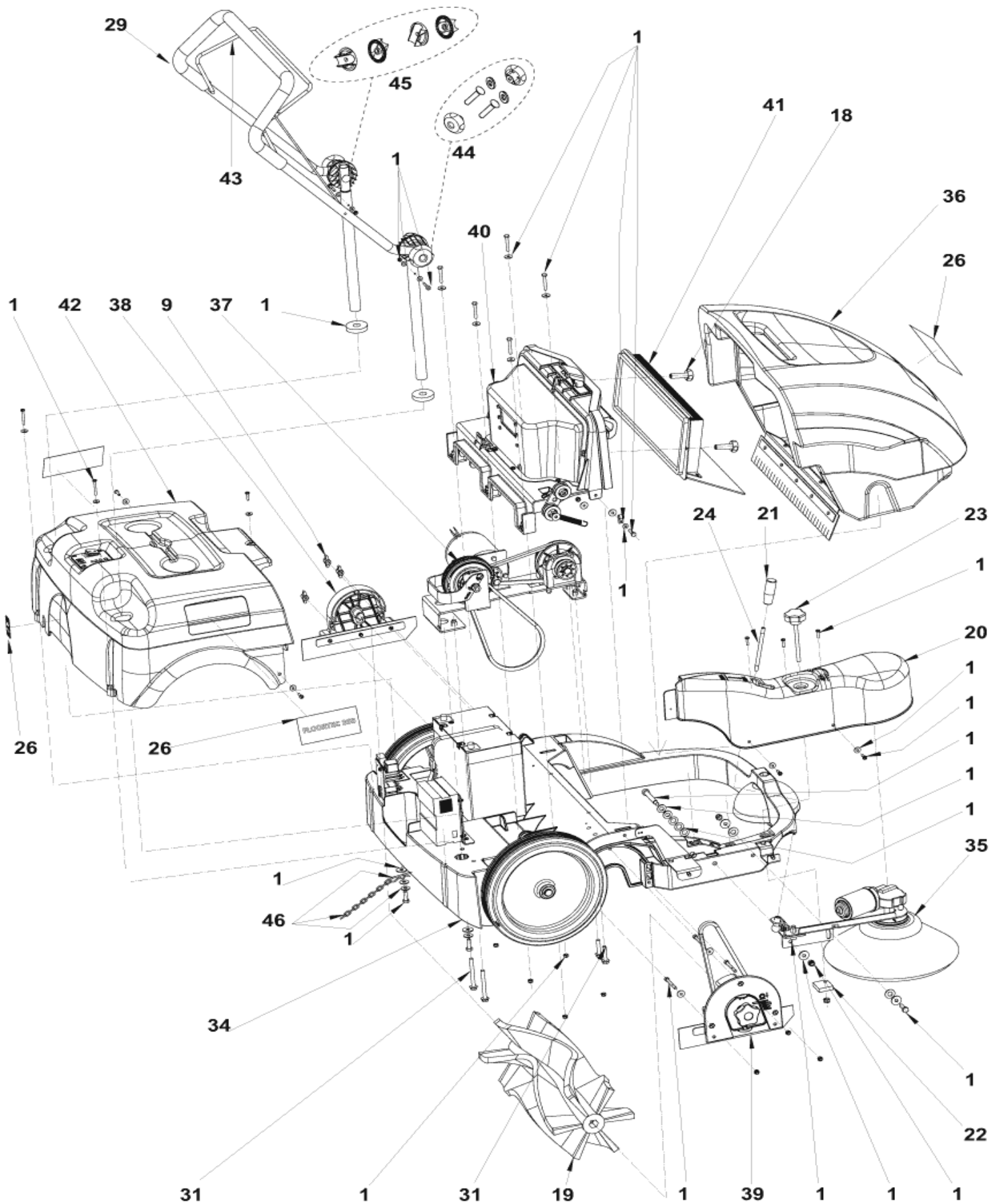
General view

FLOORTEC 350

21-10-2009

Part List ID
FLOORTEC35002

3



General view

FLOORTEC 350

21-10-2009

Part List ID
FLOORTEC35002

4

Pos	Part no.	Qty	Description		EAN
0	1463171000	1	CARPET KIT	ACCESSORY	5715492037
1	1463858000	1	GENERAL HARDWARE KIT		7319519674
9	145 0461 000	3	NUT WING M6		5711140012
18	146 2991 000	2	HANDWHEEL D.30 M6		5711140047
19	146 3015 000	1	BROOM MAIN 200X500 PPL0.3	ACCESSORY	5715492038
19	146 3016 000	1	BROOM MAIN 180X500 CARPET	ACCESSORY	5715492038
19	1463174000	1	BROOM MAIN 200X500 PPL0.7PPL		5715492038
20	146 3034 000	1	CRANKCASE.SIDE BROOM		5711140047
21	146 3037 000	1	HANDLE LEVER		5711140047
22	146 3038 000	1	ADJUSTER BLOCK F. BROOM		5711140047
23	146 3039 000	1	KNOB M8X110		5711140047
24	146 3040 000	1	LEVER SIDE BROOM		5711140047
26	1463935000	1	DECALS FLOORTEC 350 ALTO KIT	ALTO Brand	7319519675
26	1463937000	1	DECALS KIT FLOORTEC 350	Niifisk-ALTO Brand	5711140137
29	146 3067 000	1	HANDLE BAR WITH LEVER		5711140047
31	1463868000	1	HARDWARE TRANSMISSION SYST KIT		7319519674
34		1	USE LINK	CHASSIS SYSTEM	
35		1	USE LINK	SIDE BROOM ASSEMBLY	
36		1	USE LINK	HOPPER SYSTEM	
37		1	USE LINK	TRANSMISSION SYSTEM	
38		1	USE LINK	LEFT HATCH ASSEMBLY	
39		1	USE LINK	RIGHT HATCH ASSEMBLY	
40		1	USE LINK	DUST CONTROL SYSTEM	
41		1	USE LINK	FILTER ASSEMBLY	
42		1	USE LINK	CONTROL PANEL ASSEMBLY	
43	146 3119 000	1	CABLE		5711140048
44	1463859000	1	HANDLE FIXING KIT		7319519674
45	909 5099 000	1	RATCHET HANDLE ADJUST.KIT		5711140120
46	1463260000	1	CHAIN KIT	ACCESSORY	7319519675

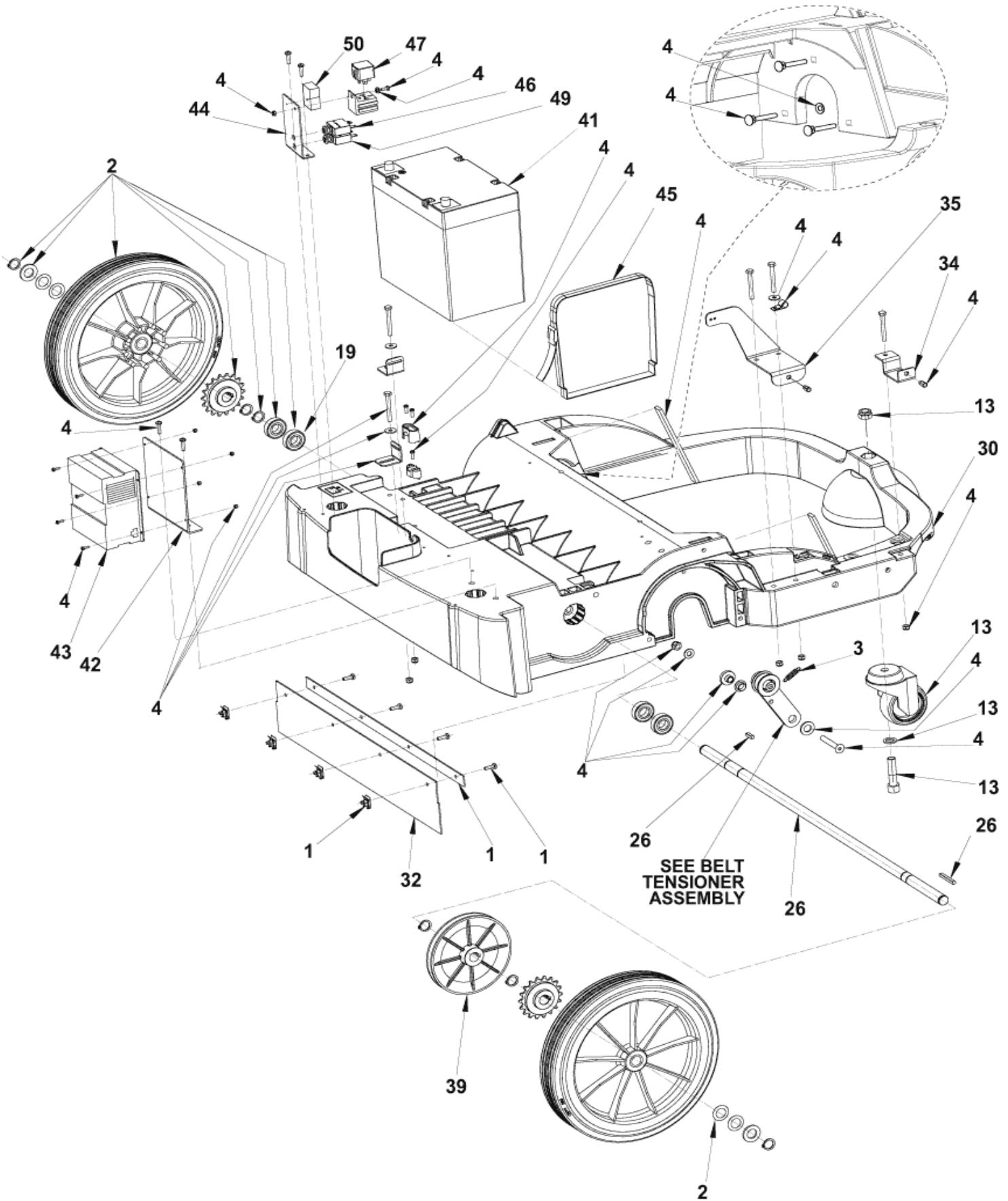
Chassis system

FLOORTEC 350

21-10-2009

Part List ID
FLOORTEC35004

5



Chassis system

FLOORTEC 350

21-10-2009

Part List ID
FLOORTEC35004

6

Pos	Part no.	Qty	Description	EAN
0	145 9788 000	1	FUSE 7.5A	5711140009
0	146 3052 000	1	HARNES MACHINE	5711140047
0	1463167000	1	SKIRTS NO MARKING KIT	5711140048
			ACCESSORY	
0	1463201000	1	BATTERY CLAMPS POS.-NEG.KIT	5711140048
0	1463255000	1	SKIRT NEOP.SIDE BROOM KIT	5711140049
			STARTING FROM SERIAL NO.072014268	
0	909 5633 000	1	CABLE EXTENSION	5711140123
0	909 5676 000	1	CABLE EXTENSION UK PLUG	5711140123
0	9096914000	1	CABLE EXTENSION	5711140131
1	146 3124 000	1	PLATES SKIRTS FIXING KIT	5711140048
2	1463976000	2	WHEEL BLUE KIT	7319519674
3	145 8925 000	1	SPRING	5711140004
4	1463861000	1	HARDWARE CHASSIS SYSTEM KIT	7319519674
13	1463862000	1	WHEEL CASTOR KIT	7319519674
19	145 8415 000	4	BALL BEARING 6003 2RS	5711140002
26	1463863000	1	SHAFT WHEELS KIT	7319519674
30	146 2978 000	1	CHASSIS	5711140047
32	1463166000	1	SKIRTS KIT	5711140048
34	146 2983 000	1	BRACKET CARTER FIXING	5711140047
35	146 2984 000	1	BRACKET CARTER FIXING	5711140047
39	146 2998 000	1	PULLEY D.140	5711140047
41	146 3049 000	1	BATTERY 12V 46 AH GEL	5715492038
41	1463254000	1	BATTERY 12V 80AH	5711140049
			ACCESSORY	
42	146 3050 000	1	BRACKET BAT.CHARGER FIX	5711140047
43	146 3051 000	1	CHARGER BATTERY 12V 6A	5711140047
44	146 3053 000	1	SUPPORT ELECTRONIC COMP.	5711140047
45	146 3054 000	1	BELT BATTERY FIXING	5711140047
46	146 3090 000	1	CIRCUIT BREAKER 5A	5711140048
47	146 3113 000	1	RELAIS 12V 70 A TYCO	5711140048
49	909 5706 000	1	BREAKER CIRCUIT 30A	5711140123
50	909 6341 000	1	HOLDER FUSE	5711140127

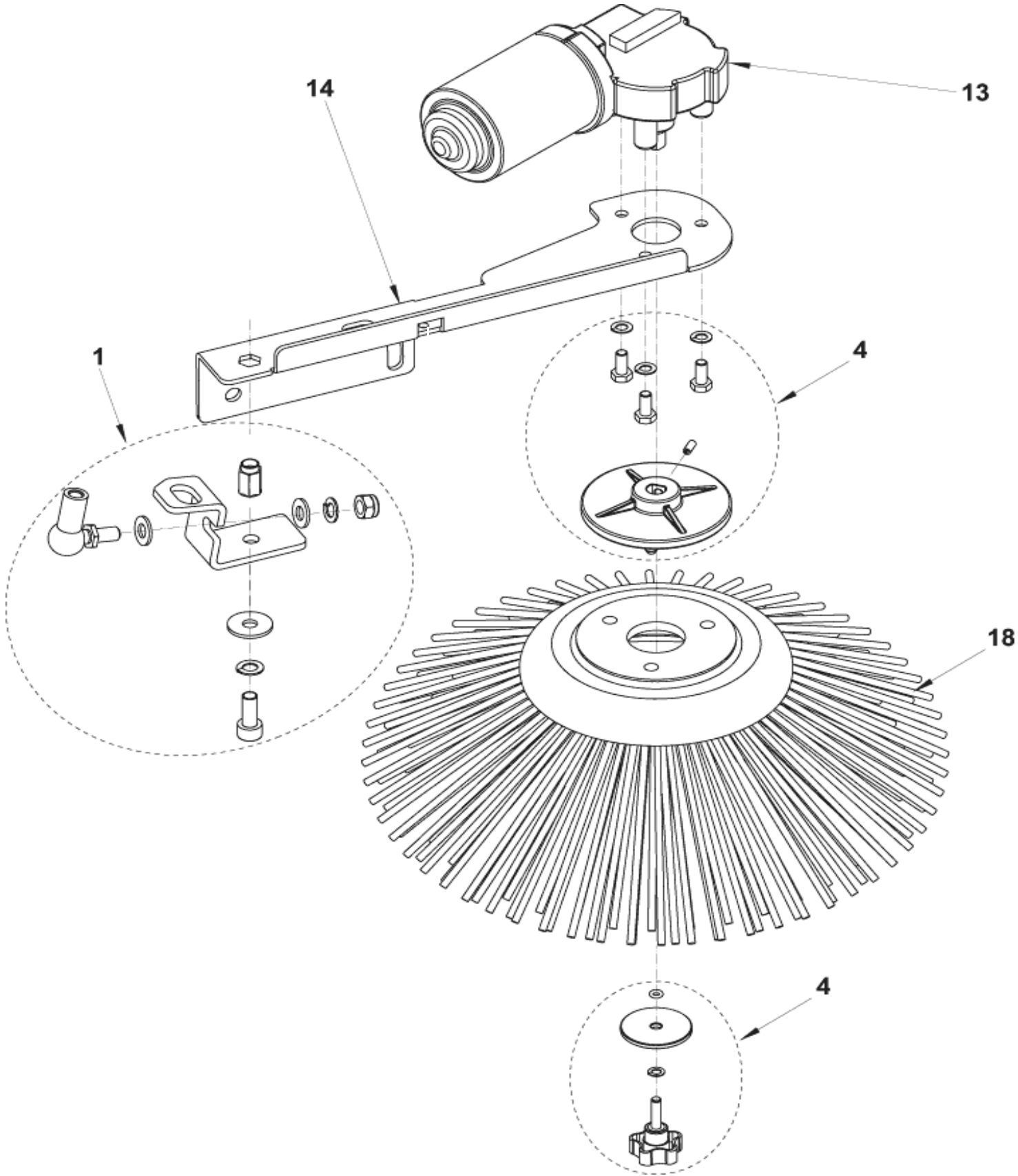
Side broom assembly

FLOORTEC 350

21-10-2009

Part List ID
FLOORTEC35006

7



Side broom assembly

FLOORTEC 350

21-10-2009

Part List ID
FLOORTEC35006

8

Pos	Part no.	Qty	Description	EAN
1	1463864000	1	HARDWARE SIDE BROOM KIT	7319519674
4	1463865000	1	HUB SIDE BROOM FIZING	7319519674
13	146 3028 000	1	REDUCTION GEARMOTOR 40W 12V	5711140047
14	146 3029 000	1	SUPPORT SIDE BROOM	5711140047
18	146 3035 000	1	BROOM SIDE 109X315 PPL0.5	5715492038
18	146 3036 000	1	BROOM SIDE 109X315 NYLON CARPE	5715492038
			ACCESSORY	

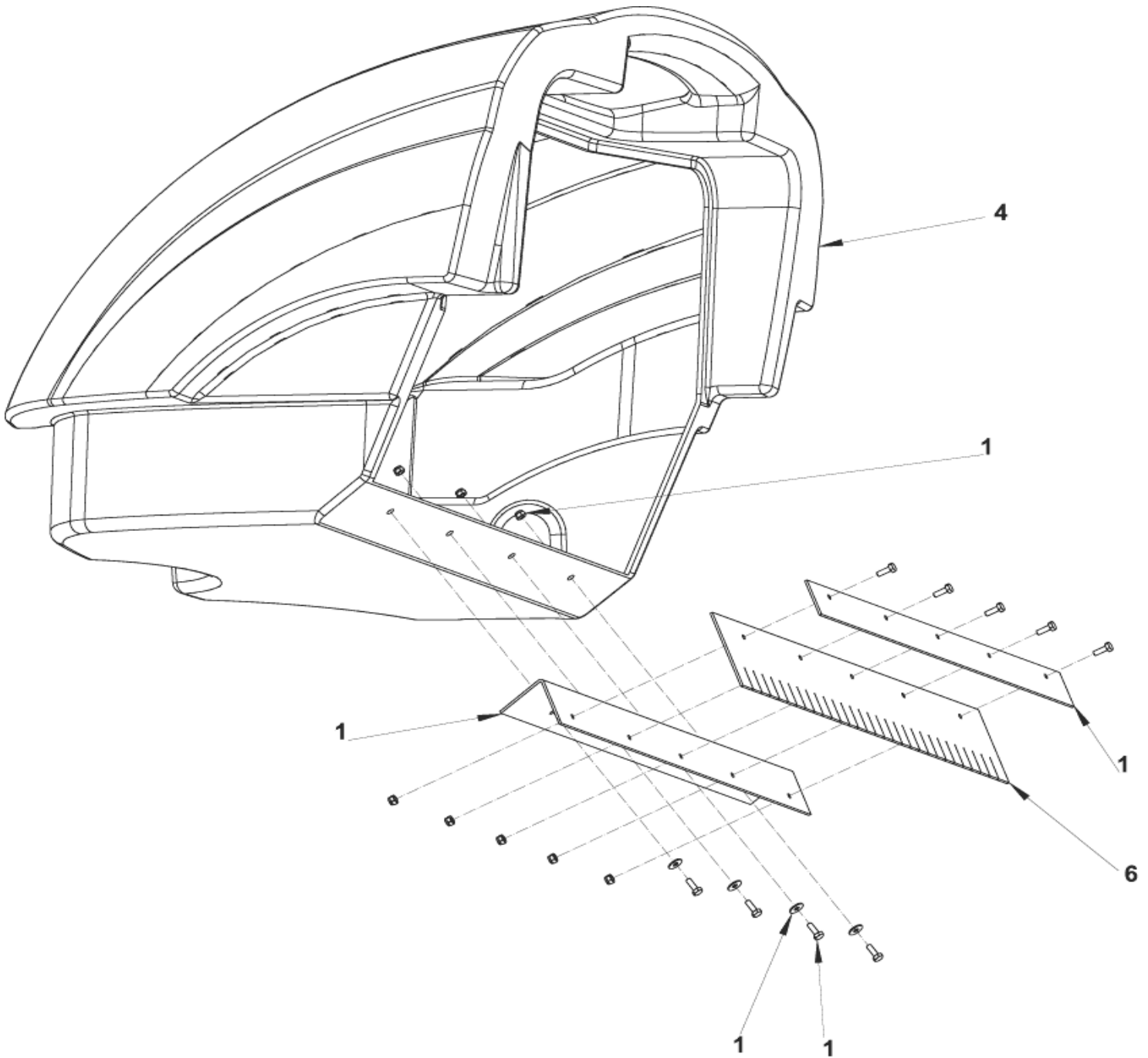
Hopper system

FLOORTEC 350

21-10-2009

Part List ID
FLOORTEC35008

9



Hopper system

FLOORTEC 350

21-10-2009

Part List ID
FLOORTEC35008

10

Pos	Part no.	Qty	Description	EAN
1	146 3124 000	1	PLATES SKIRTS FIXING KIT	5711140048
4	146 3043 000	1	CONTAINER DIRT.ROTOMOLDED	5711140047
6	146 3047 000	1	SKIRT NON MARK.DIRT CONT.	5715492038
6	1463166000	1	SKIRTS KIT	5711140048

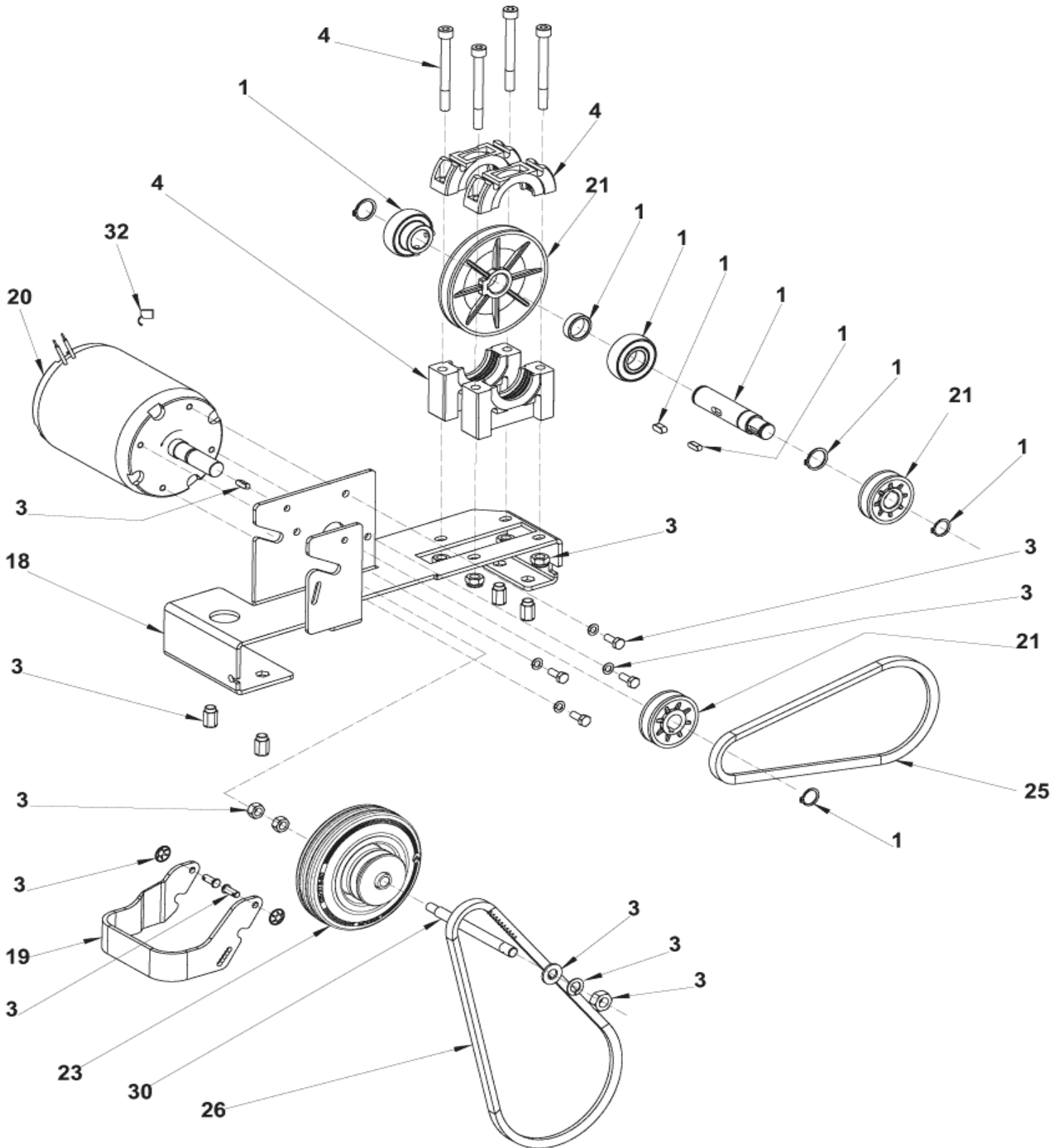
Transmission

FLOORTEC 350

21-10-2009

Part List ID
FLOORTEC35010

11



Transmission

FLOORTEC 350

21-10-2009

Part List ID
FLOORTEC35010

12

Pos	Part no.	Qty	Description	EAN
1	1463867000	1	SHAFT PULLEYS KIT	7319519674
3	1463868000	1	HARDWARE TRANSMISSION SYST KIT	7319519674
4	1463866000	1	BEARING SUPPORTS KIT	7319519674
18	146 3000 000	1	PLATE MOTOR SUPPORT	5711140047
19	146 3002 000	1	BRACKET CLUTCH WHEEL	5711140047
20	146 3003 000	1	MOTOR ELECTRIC 200W 12V	5711140047
21	1463869000	1	PULLEY S KIT	7319519674
23	146 3006 000	1	WHEEL DRIVE CLUTCH	5711140047
25	1463305000	1	BELT	5711140049
26	146 3009 000	1	BELT	5711140047
30	146 3013 000	1	SHAFT DRIVE CLUTCH WHEEL	5711140047
32	909 6893 000	1	BRUSH CARBON KIT 4PCS	5711140131

Right and left hatch assemblies

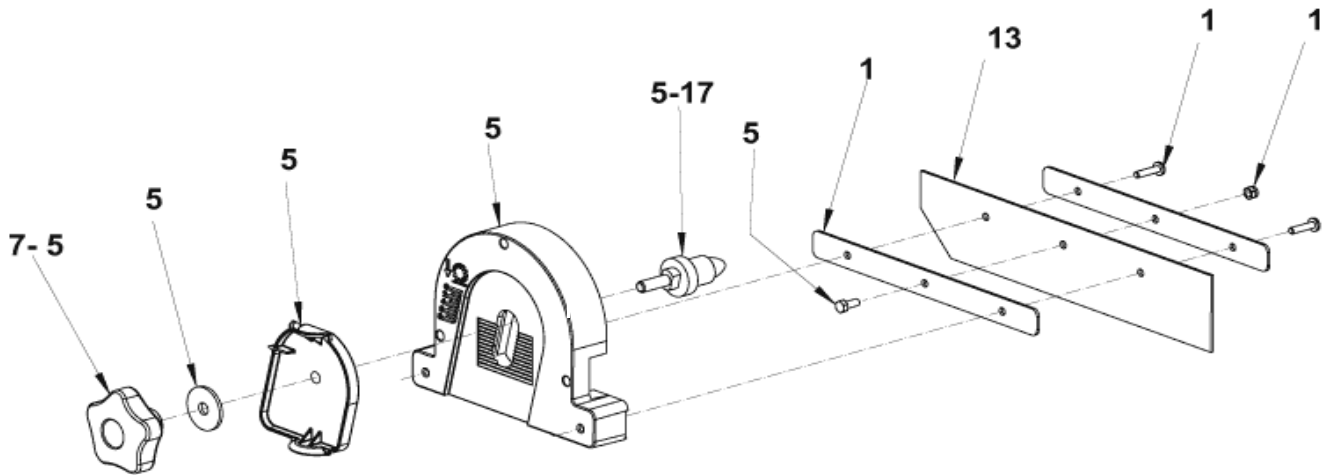
FLOORTEC 350

21-10-2009

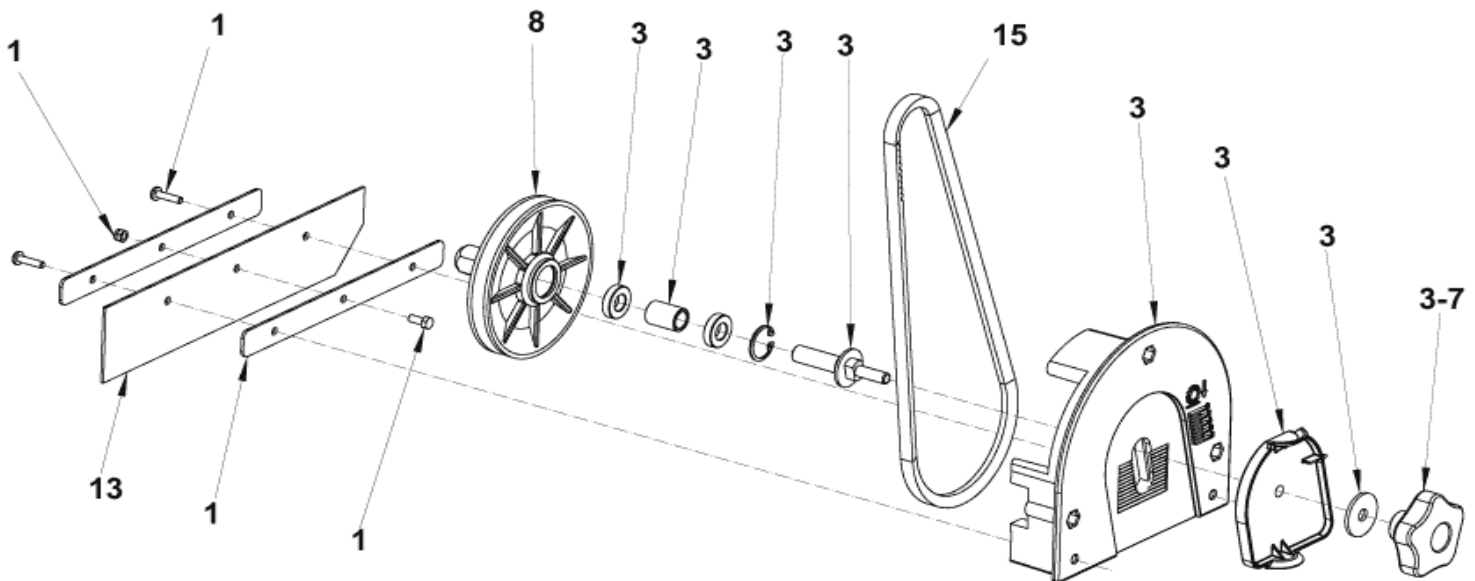
Part List ID
FLOORTEC35012

13

ASSIEME PORTELLO SINISTRO - LEFT HATCH ASSEMBLY



ASSIEME PORTELLO DESTRO - RIGHT HATCH ASSEMBLY



Right and left hatch assemblies

FLOORTEC 350

21-10-2009

Part List ID
FLOORTEC35012

14

Pos	Part no.	Qty	Description	EAN
1	146 3124 000	1	PLATES SKIRTS FIXING KIT	5711140048
3	1463870000	1	HATCH RIGHT FIXING KIT	7319519674
5	1463871000	1	HATCH LEFT FIXING KIT	7319519674
7	146 1852 000	2	KNOB M8	5711140041
8	146 3014 000	1	PULLEY D. 112	5711140047
13	1463166000	1	SKIRTS KIT	5711140048
15	146 3027 000	1	BELT	5711140047
17	146 3020 000	1	PIN MAIN BROOM	5711140047

Belt tensioner assemblies

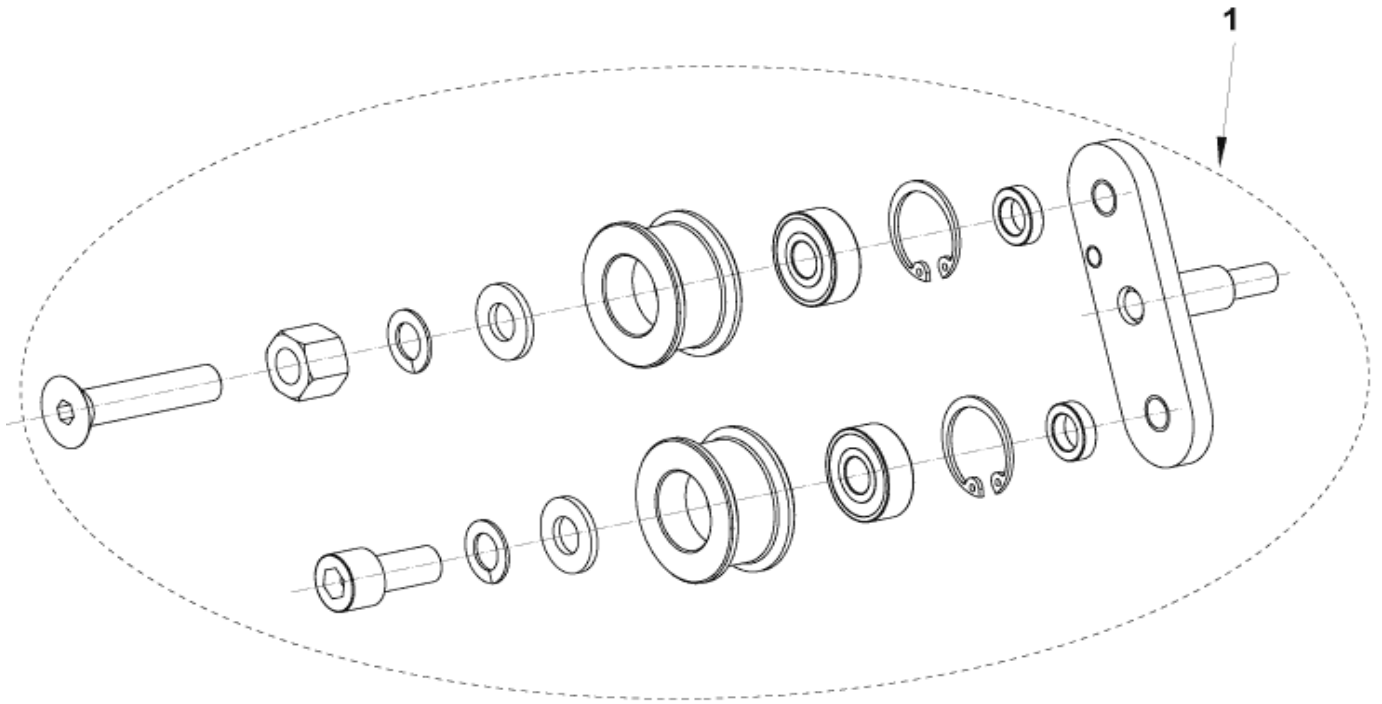
FLOORTEC 350

21-10-2009

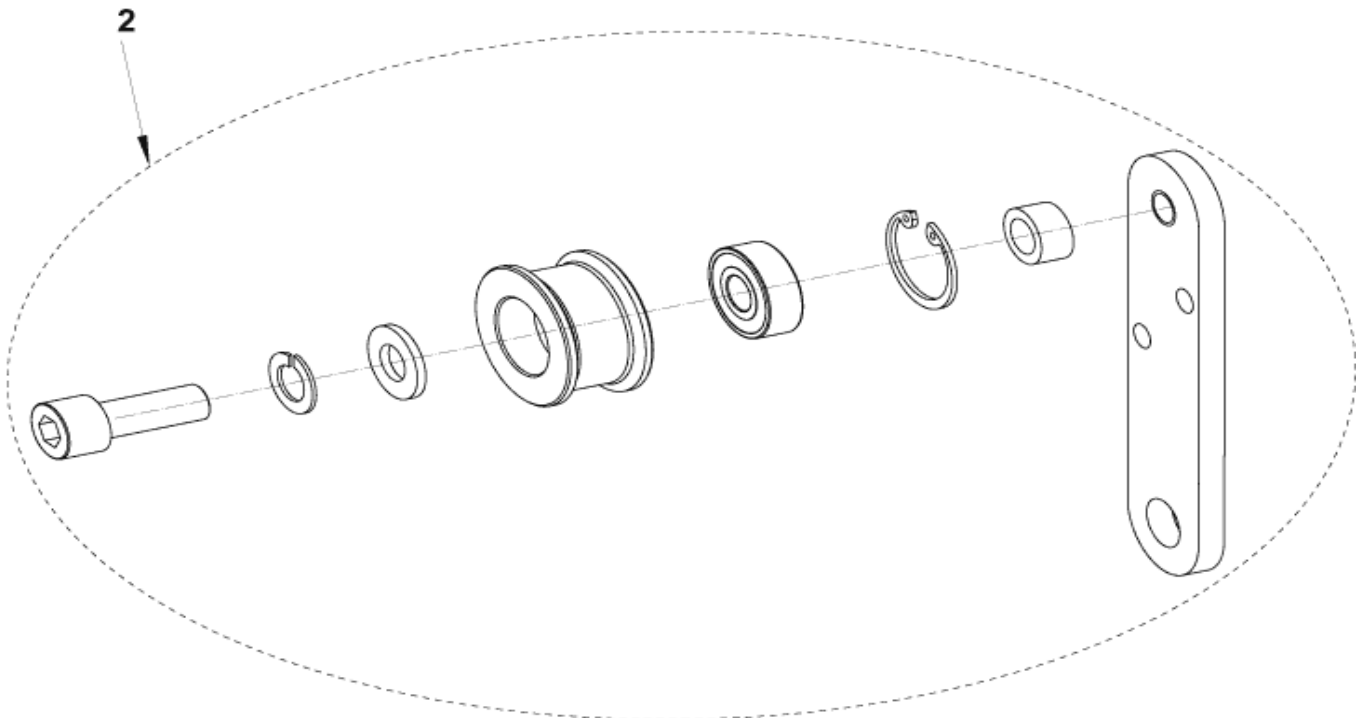
Part List ID
FLOORTEC35014

15

GRUPPO TENDICINGHIA DOPPIO - DOUBLE BELT TENSIONER ASSEMBLY



GRUPPO TENDICINGHIA - BELT TENSIONER ASSEMBLY



Belt tensioner assemblies

FLOORTEC 350

21-10-2009

Part List ID
FLOORTEC35014

16

Pos	Part no.	Qty	Description	EAN
1	1463872000	1	BELT TENSIONER DOUBLE KIT	7319519674
2	1463873000	1	BELT TENSIONER KIT	7319519674

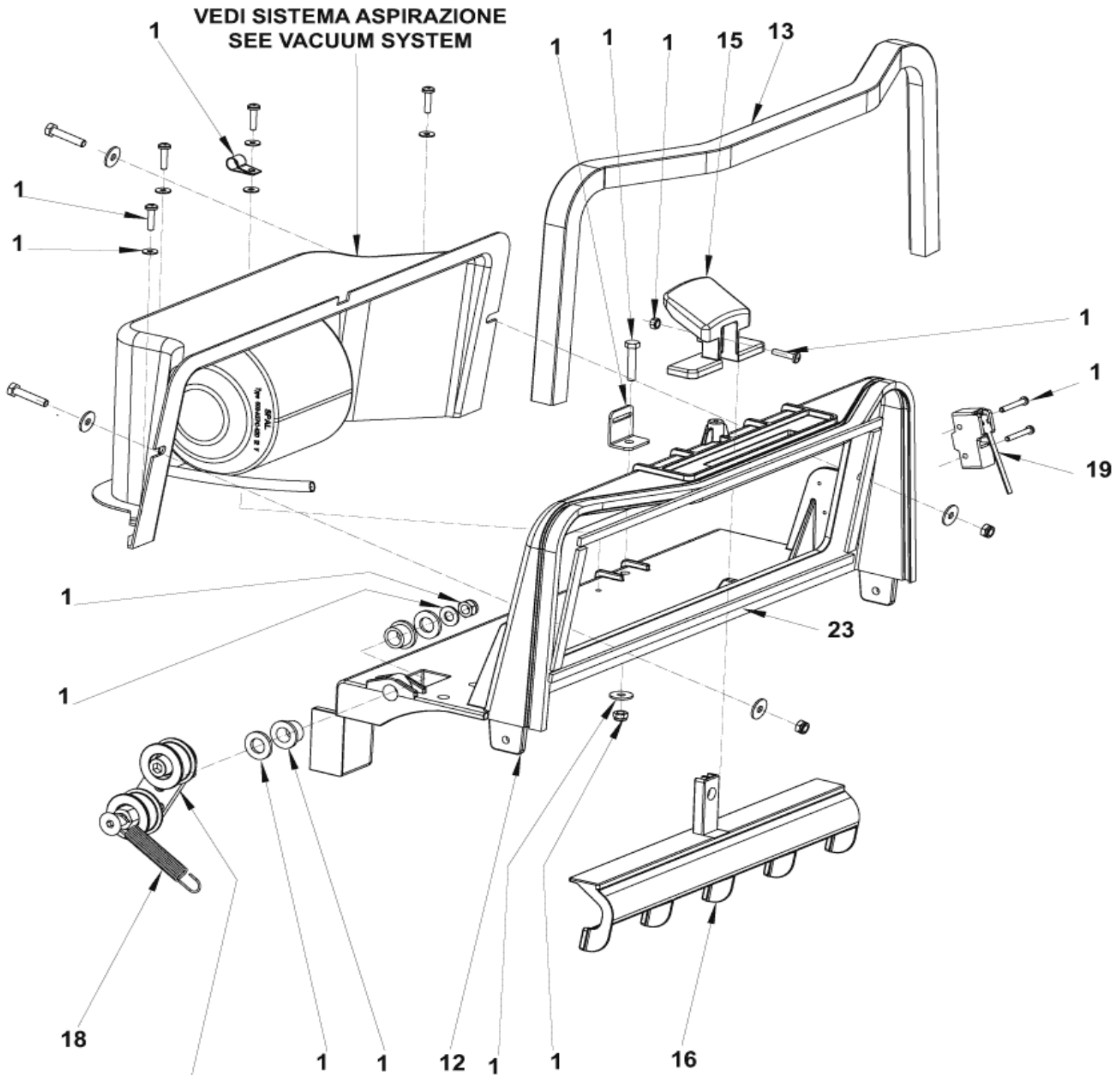
Dust control system

FLOORTEC 350

21-10-2009

Part List ID
FLOORTEC35016

17



Dust control system

FLOORTEC 350

21-10-2009

Part List ID
FLOORTEC35016

18

Pos	Part no.	Qty	Description	EAN
1	1463874000	1	HARDWARE DUST CONTROL SYST.KIT	7319519674
12	146 2988 000	1	SUPPORT FILTER	5711140047
13	1463747000	1	GASKET EXTRUDED L 845MM	5711140050
15	146 2992 000	1	HANDLE FILTER SHAKER	5711140047
16	146 2993 000	1	FILTER SHAKER	5711140047
18	145 0274 000	1	SPRING	5711140004
19	145 9679 000	1	MICROSWITCH 16A 250V	5711140008
23	1463176000	1	GASKETS FILTER KIT	5711140048

Vacuum system and filter assembly

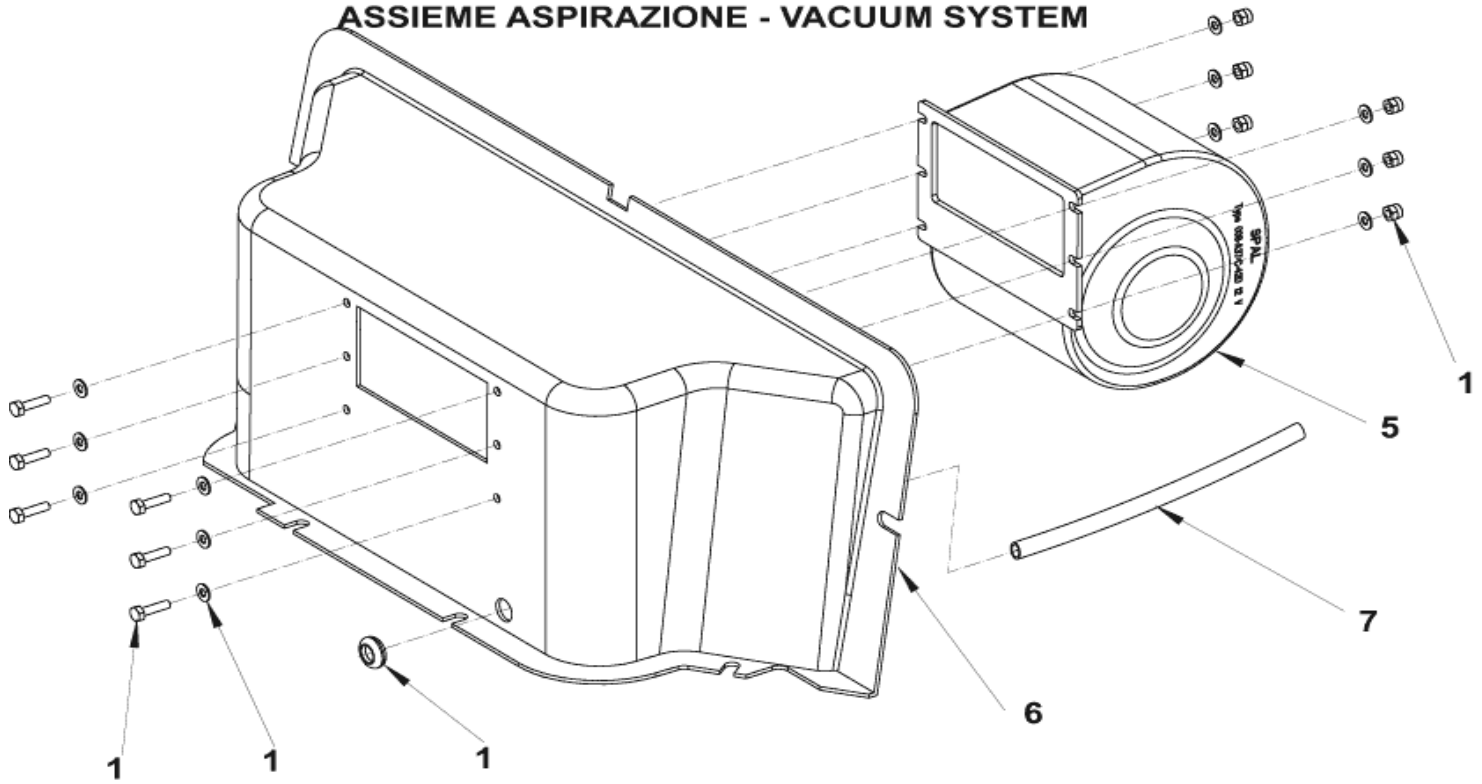
FLOORTEC 350

21-10-2009

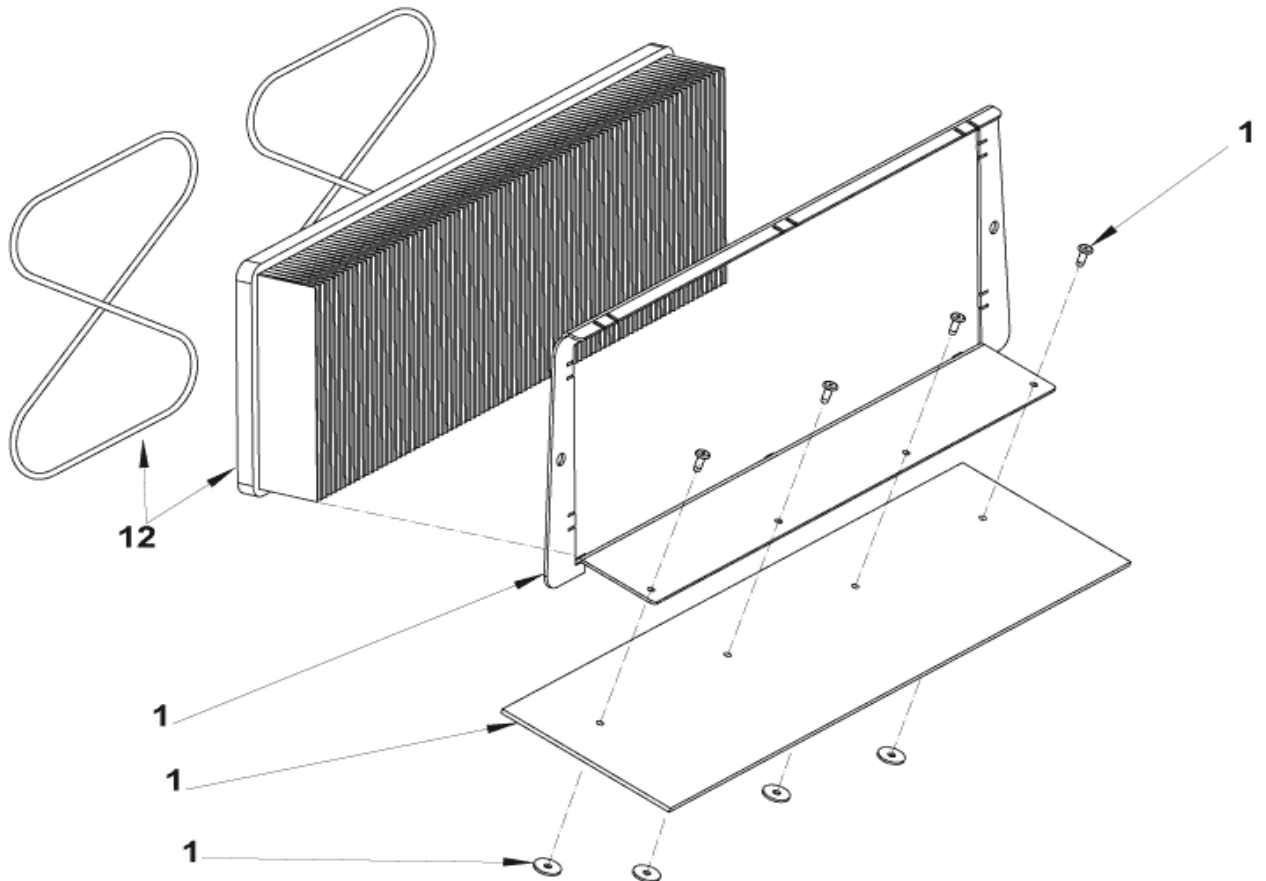
Part List ID
FLOORTEC35018

19

ASSIEME ASPIRAZIONE - VACUUM SYSTEM



GRUPPO FILTRO - FILTER ASSEMBLY



Vacuum system and filter assembly

FLOORTEC 350

21-10-2009

Part List ID
FLOORTEC35018

20

Pos	Part no.	Qty	Description	EAN
1	1463875000	1	HARDWARE FILTER FIXING KIT	7319519674
5	146 1804 000	1	FAN	5711140041
6	146 3055 000	1	CONVEYOR	5711140047
7	146 3125 000	1	SHEATH D.6XD.7 L 200	5711140048
12	1463161000	1	FILTER POLY ESTER KIT	5715492037

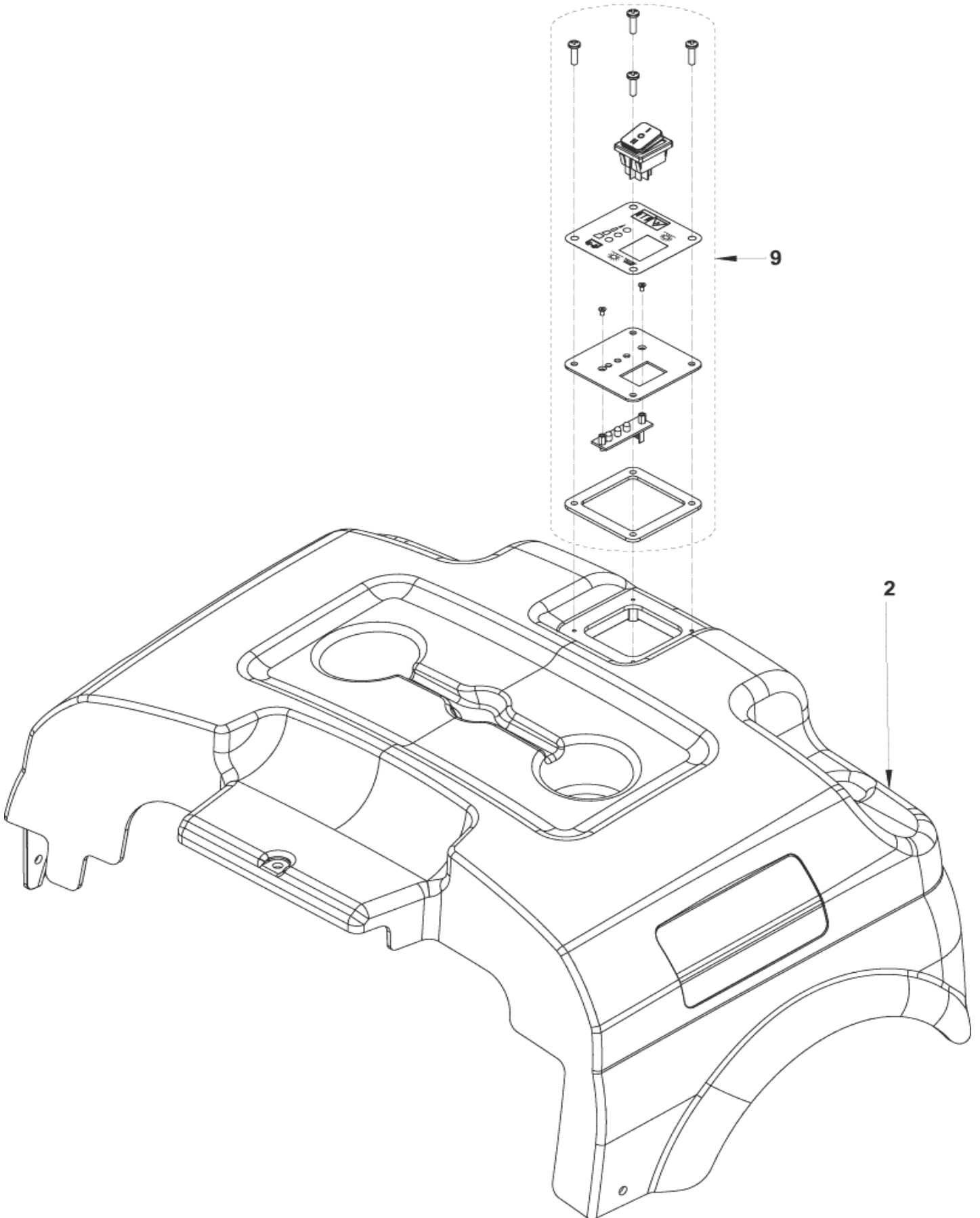
Control panel system

FLOORTEC 350

21-10-2009

Part List ID
FLOORTEC35020

21



Control panel system

FLOORTEC 350

21-10-2009

Part List ID
FLOORTEC35020

22

Pos	Part no.	Qty	Description	EAN
2	146 3070 000	1	COVER REAR BLACK	5711140047
9	1463183000	1	PANEL CONTROL W/DECAL KIT	5711140048

Wiring diagram

FLOORTEC 350

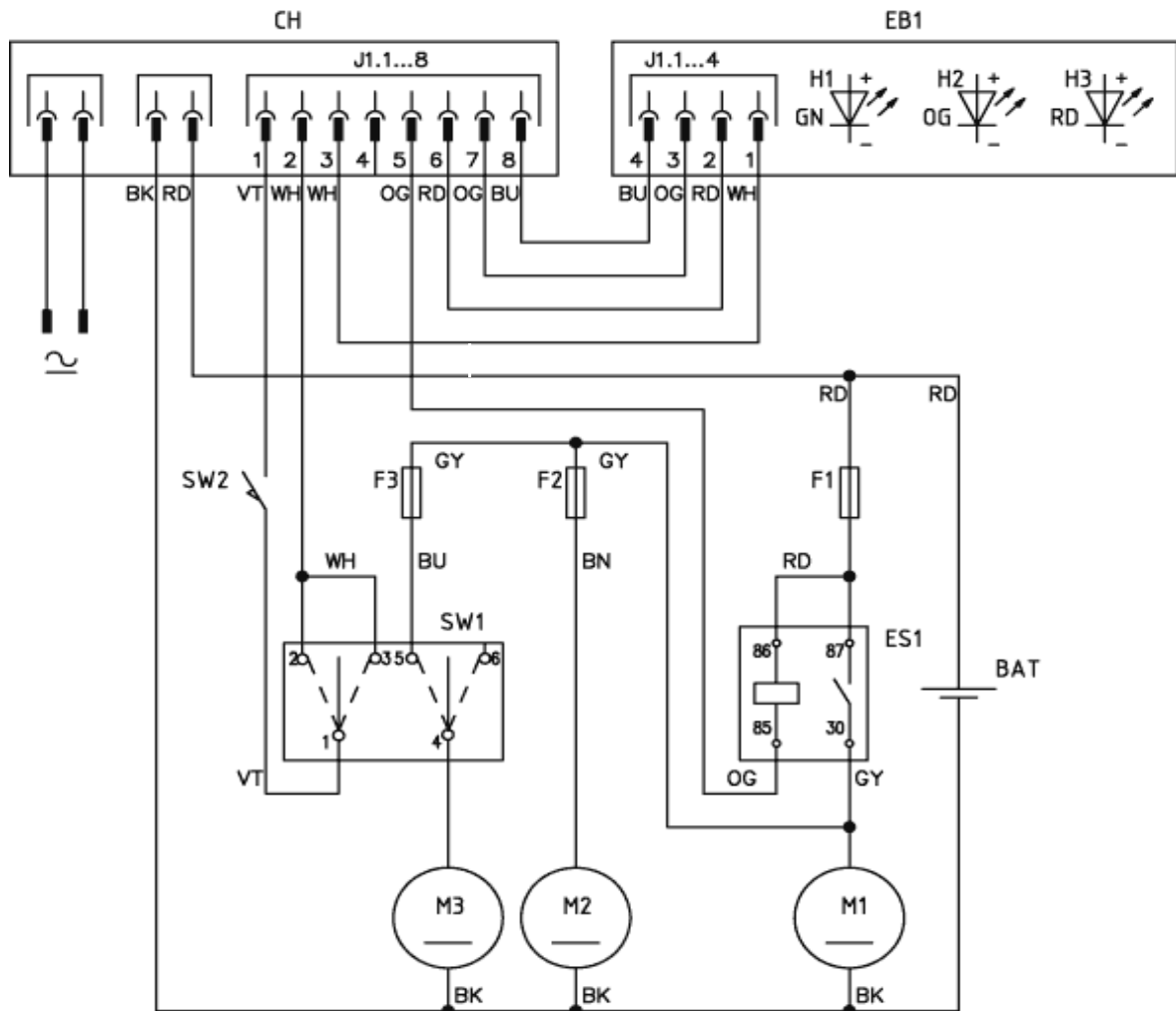
21-10-2009

Part List ID
FLOORTEC35022

23

WIRING DIAGRAM

146 3089 000 - Rev.B



COMPONENTS	
BAT	12V Battery
CH1	Batt. charger / Function controller
EB1	LED board
ES1	Relais
F1	Main circuit breaker
F2	Fan fuse
F3	Side broom circuit breaker
H1	Full charge led
H2	Half charge led
H3	Empty charge led
M1	Main motor
M2	Fan
M3	Side broom motor
SW1	Switch
SW2	Hopper microswitch

Wiring diagram

FLOORTEC 350

21-10-2009

Part List ID
FLOORTEC35022

24

Recommended spare parts and accessories

FLOORTEC 350

21-10-2009

Part List ID
FLOORTEC35024

25

No Drawing For Part List

Recommended spare parts and accessories

FLOORTEC 350

21-10-2009

Part List ID
FLOORTEC35024

26

Pos	Part no.	Qty	Description		EAN
1	1463166000	1	SKIRTS KIT	WEAR PARTS	5711140048
2	146 3035 000	1	BROOM SIDE 109X315 PPL0.5	WEAR PARTS	5715492038
3	1463174000	1	BROOM MAIN 200X500 PPL0.7PPL	WEAR PARTS	5715492038
4	146 3027 000	1	BELT	WEAR PARTS	5711140047
5	1463161000	1	FILTER POLY ESTER KIT	ORDINARY MAINTENANCE	5715492037
6	146 3009 000	1	BELT	ORDINARY MAINTENANCE	5711140047
7	1463305000	1	BELT	ORDINARY MAINTENANCE	5711140049
8	1463976000	1	WHEEL BLUE KIT	EXTRAORDINARY MAINTENANCE	7319519674
9	146 1804 000	1	FAN	EXTRAORDINARY MAINTENANCE	5711140041
10	909 5706 000	1	BREAKER CIRCUIT 30A	EXTRAORDINARY MAINTENANCE	5711140123
11	146 3051 000	1	CHARGER BATTERY 12V 6A	EXTRAORDINARY MAINTENANCE	5711140047
12	146 3049 000	1	BATTERY 12V 46 AH GEL	EXTRAORDINARY MAINTENANCE	5715492038
13	146 3113 000	1	RELAIS 12V 70 A TYCO	EXTRAORDINARY MAINTENANCE	5711140048
14	146 3090 000	1	CIRCUIT BREAKER 5A	EXTRAORDINARY MAINTENANCE	5711140048
15	1463183000	1	PANEL CONTROL W/DECAL KIT	EXTRAORDINARY MAINTENANCE	5711140048
16	146 3003 000	1	MOTOR ELECTRIC 200W 12V	EXTRAORDINARY MAINTENANCE	5711140047
17	145 9679 000	1	MICROSWITCH 16A 250V	EXTRAORDINARY MAINTENANCE	5711140008
18	146 3028 000	1	REDUCTION GEARMOTOR 40W 12V	EXTRAORDINARY MAINTENANCE	5711140047
19	1463254000	1	BATTERY 12V 80AH	ACCESSORY	5711140049
20	146 3016 000	1	BROOM MAIN 180X500 CARPET	ACCESSORY	5715492038
21	146 3015 000	1	BROOM MAIN 200X500 PPL0.3	ACCESSORY	5715492038
22	146 3036 000	1	BROOM SIDE 109X315 NYLON CARPE	ACCESSORY	5715492038
23	1463171000	1	CARPET KIT	ACCESSORY	5715492037
24	1463167000	1	SKIRTS NO MARKING KIT	ACCESSORY	5711140048
25	1463255000	1	SKIRT NEOP.SIDE BROOM KIT	ACCESSORY	5711140049