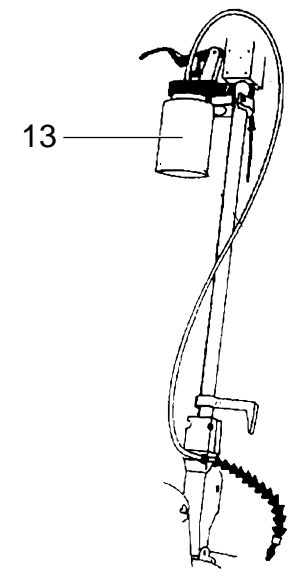
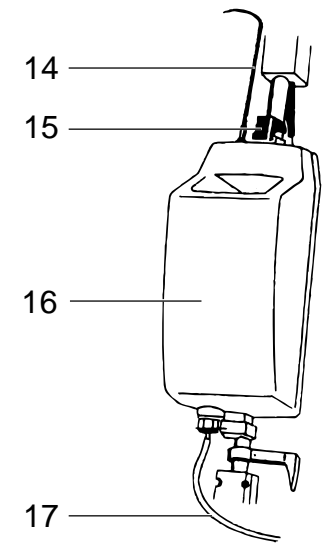
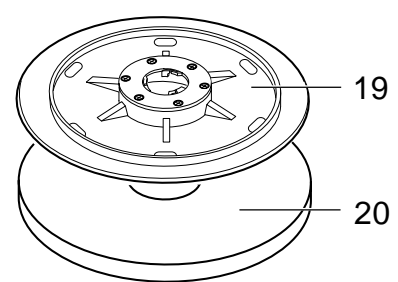
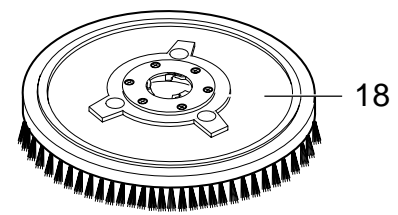
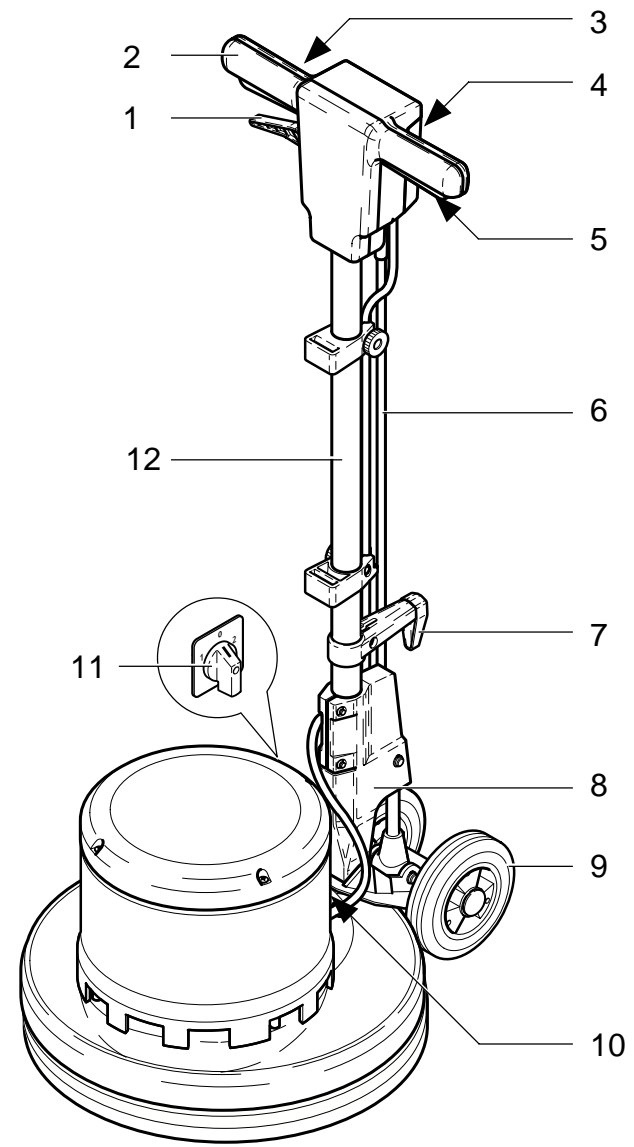


# SPIN 43 SPIN 43 HS SPIN 43 DS



**ALTO**<sup>®</sup>  
Total Cleaning  
Confidence<sup>™</sup>

Ⓚ	Betriebsanleitung .....	3
ⒼⒷ	Operating Instructions .....	16
Ⓕ	Notice d'utilisation .....	29
ⓃⓁ	Gebruiksaanwijzing .....	42
Ⓜ	Istruzioni sull'uso .....	55
Ⓝ	Driftsinstruks.....	69
Ⓢ	Bruksanvisning .....	81
ⒹⓀ	Driftsvejledning .....	94
ⓈⒻ	Käyttöohje .....	107
ⓈⓁⓞ	Navodilo za uporabo .....	120
ⒻⓇ	Uputstvo za rad .....	133
ⓈⓀ	Prevádzkový návod .....	146
ⒸⓏ	Provozní návod .....	159
Ⓟ	Instrukcja obsługi.....	172
Ⓕ	Kezelési utasítás.....	185
Ⓔ	Instrucciones de manejo.....	198
Ⓟ	Instruções de operação .....	211
ⒼⓇ	Οδηγίες λειτουργίας.....	224
ⓉⓇ	İşletme kılavuzu.....	237

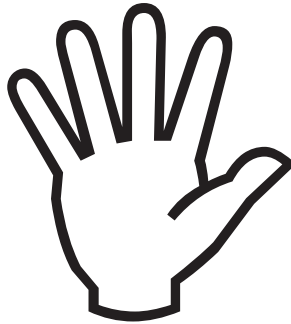


<b>Explanation of symbols</b>	.....	17
<b>1 Important safety instructions</b>	.....	17
<b>2 Description</b>	2.1 Purpose of the machine .....	19
	2.2 Product liability .....	19
	2.3 Operating elements .....	19
<b>3 Before starting the cleaner</b>	3.1 Assembly .....	20
	3.2 Transport .....	20
<b>4 Control/Operation</b>	4.1 Electrical connections .....	21
	4.2 Using accessories .....	21
	4.3 Manoeuvring the cleaner .....	22
	4.4 Supervising cleaning .....	22
<b>5 Applications and cleaning techniques</b>	5.1 Cleaning techniques .....	23
	5.2 Typical applications .....	24
<b>6 After cleaning</b>	6.1 Putting the shaft upright .....	25
	6.2 Removing accessories .....	25
	6.3 Rolling up the power cord .....	25
	6.4 Storage .....	25
<b>7 Maintenance</b>	7.1 Maintenance plan .....	26
	7.2 Maintenance work .....	26
<b>8 Troubleshooting</b>	.....	26
<b>9 Further information</b>	9.1 Recycling the cleaner .....	27
	9.2 Guarantee .....	27
	9.3 Accessories .....	27
	9.4 Technical data .....	28
	9.5 EC conformity declaration .....	28

## Explanation of symbols



Safety instructions marked with this symbol in these operating instructions must be observed to prevent danger to persons.



This symbol is used to mark safety instructions that must be observed to prevent damage to the cleaner and its performance.



This indicates tips and instructions to simplify work and to ensure safe operation.

# 1 Important safety instructions



These safety instructions are intended for users.

Before assembly, start-up and maintenance of the cleaner please read the information and recommendations in these operating instructions. This ensures that you are well acquainted with the cleaner and can use it efficiently.

Care and maintenance of the cleaner in accordance with these instructions increases your safety and retains the value of the cleaner.

The manufacturer accepts no liability for personal or material damage caused by improper handling of the cleaner.

Before starting up the cleaner, read these operating instructions thoroughly and keep them in an easily accessible place.

Only allow the cleaner to be used by persons who have been trained in its use and who have been explicitly authorized to use it.



## Workplace

The workplace is behind the cleaner.

## General

Use of the cleaner is subject to current national regulations.

Besides the operating instructions and binding accident prevention regulations valid in the country of use, observe recognized regulations for safe and proper work.

Never use unsafe cleaning techniques.

Do not use the cleaner on public paths and roads.

## Electrical connections



### CAUTION!

Never push the cleaner over power cords. Danger of electrocution!

Do not damage the power cord by riding over it, crushing or pulling it, etc.

Check the power cord regularly to detect signs of damage.

Do not use the cleaner if the condition of the power cord is poor.

When using or replacing power cords, do not use any other cords than those specified by the manufacturer.

When replacing couplings or power cords, ensure that splash water protection and mechanical strength are adequate.

Do not start the cleaner unless the power supply in the building to be cleaned complies with the specifications on the rating plate of the cleaner.

## Risks

### CAUTION!

The cleaner is not suitable to clean surfaces that release hazardous dust and liquids. Do not use on steps.

## Inclines

This cleaner is designed for use on level surfaces with a maximum incline of 2% only.

## Stationary cleaner

When the cleaner is stationary, switch off the brush unit immediately to prevent damage to the floor covering.

## Cleaning agents

Only use cleaning agents approved by Alto.

## Maintenance

Service and repair work should be carried out by persons with technical and legal authorization only.

When cleaning and servicing the cleaner, replacing parts or changing mode of operation, switch off the cleaner and unplug it.

## 2 Description

### 2.1 Purpose of the machine

All single-disc cleaners are designed to clean and care for floor coverings inside buildings only.

Any other use is considered as improper use. The manufacturer accepts no liability for any damage resulting from such use. The risk for such use is borne solely by the user.

The cleaners are suitable for commercial use, e.g. in hotels, schools, hospitals, etc.

Proper use also includes proper operation, servicing and repairs as specified by the manufacturer.

Observe the relevant accident prevention regulations and any other generally accepted safety and working regulations.

The manufacturer accepts no liability for damage resulting from any changes made to the cleaner by the user.

Before using the cleaner, check whether floor coverings are suitable for this cleaning technique. Beware of area compression in point-elastic floors, e.g. in gym halls.

The manufacturer accepts no liability for damage to the cleaner and the cleaned floor that is caused by the use of wrong brushes and cleaning agents.

### 2.2 Product liability

Please note that the cleaners may be used for their intended purpose only. If the cleaners are not used for their intended purpose, the user has the sole

responsibility. The manufacturer accepts no liability whatsoever.

### 2.3 Operating elements

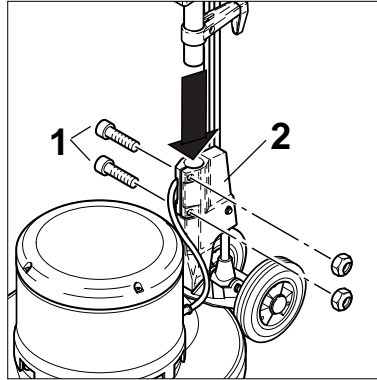


- 1 Shaft adjustment lever
- 2 Guide handle
- 3 Switch lock
- 4 Socket (SPIN 43 HS)
- 5 Brush motor switch
- 6 Power cord
- 7 Power cord hook
- 8 Shaft adjustment joint
- 9 Wheels
- 10 Connector for waste hose
- 11 Speed switch (SPIN 43 DS)
- 12 Shaft

- Accessories  
(not included):
- 13 Spraymaster
  - 14 Tank lever
  - 15 Tank bracket
  - 16 Liquid tank
  - 17 Waste hose
  - 18 Brush
  - 19 Drive plate for pad
  - 20 Pad

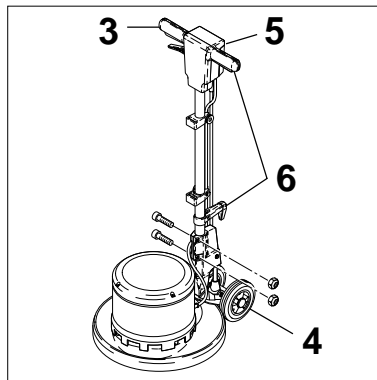
## 3 Before starting the cleaner

### 3.1 Assembly



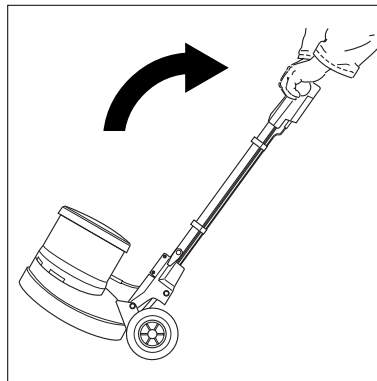
For transport reasons, the motor head and the shaft are supplied not assembled.

1. Loosen the hexagon socket screws (1) in the shaft adjustment joint (2).
2. Insert the shaft gently as far as possible into the shaft adjustment joint.



3. Align the handle (3) parallel to the wheels (4) so that the open side of the shaft upper housing faces the rear (5).
4. Retighten the hexagon socket screws in the shaft adjustment joint.
5. Wind the power cord around the handle and the power cord hook (6).

### 3.2 Transport



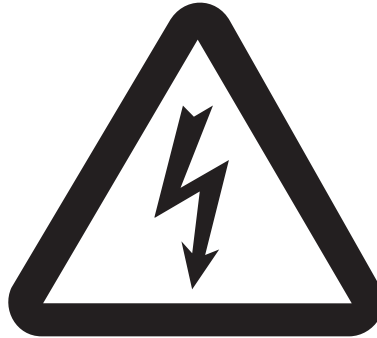
1. Grasp the handle with both hands and tip the cleaner until it stands on the two wheels.
2. Wheel the cleaner to where it is needed.

When transporting the cleaner in elevators, observe current safety regulations, in particular with regard to carrying capacity.

When transporting the cleaner in elevators, place the shaft in an upright position to prevent it from catching on elevator shaft walls.

# 4 Control/Operation

## 4.1 Electrical connections



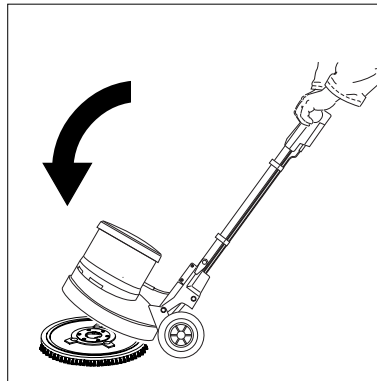
### CAUTION!

Connect the cleaner to a proper electrical installation only.

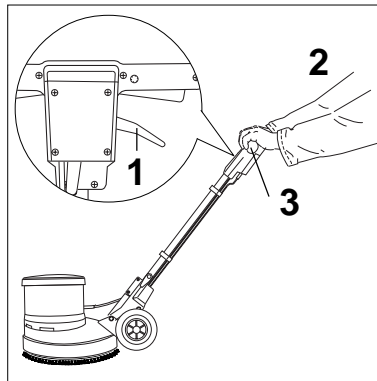
Follow safety instructions in Chapter 1.

1. Plug the cleaner into a socket.

## 4.2 Using accessories



1. Place the accessory (brush or drive plate with pad) on the floor.
2. Tip the cleaner on to its wheels and push it over accessory until the drive star and the brush flange are vertically aligned.

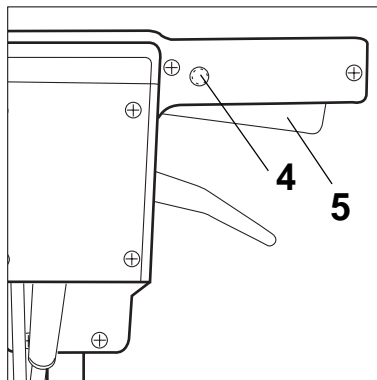


3. Lower the cleaner on to the accessory.
4. Pull the shaft adjustment lever (1) and lower the shaft into its cleaning position.

### NOTE!

Extend both arms loosely downwards (2). Always guide the cleaner with both hands on the handle (3).

5. Align the cleaner horizontally on the accessory.



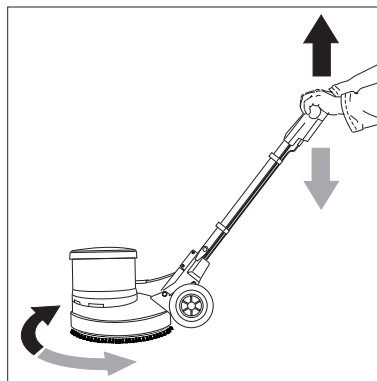
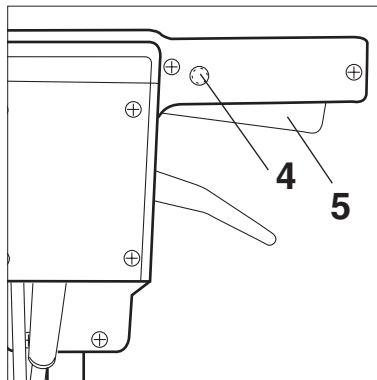
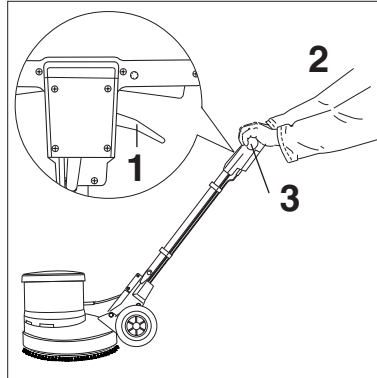
### NOTE!

When using the SPIN 43 DS, use low speed to fit the accessory.

6. Press the switch lock (4) and briefly press the brush motor switch (5). The brush motor runs and the accessory automatically engages.



### 4.3 Manoeuvring the cleaner



1. Pull the shaft adjustment lever (1) and lower the shaft into its cleaning position.

**NOTE!**

Extend both arms loosely downwards (2). Always guide the cleaner with both hands on the handle (3).

2. Switch on the motor: Press the switch lock (4) and operate the brush motor switch (5) (right and left).

3. Switch off the motor: Release the brush motor switch (5).

When the brush motor is running:

4. **Raise** the shaft slightly and the cleaner moves to the **right**.

5. **Lower** the shaft and the cleaner moves to the **left**.

6. Keep the shaft in the **centre** and the cleaner cleans **on the spot**.

### 4.4 Supervising cleaning



If foam or liquid emerges from the fresh water tank, switch off the cleaner immediately.

# 5 Applications and cleaning techniques

## 5.1 Cleaning techniques

Floors can be effectively cleaned by following a few rules in combination with your experience in special areas.

If used correctly, accessories and cleaning agents can enhance the cleaning effect. A few basic rules are stated below.

### 5.1.1 Thorough cleaning

Attached dirt and/or worn protective films or other residues that impair the appearance of the surface are removed.  
Generally, thorough cleaning is only necessary at long intervals.

Aim/results:  
The surface has

- no attached dirt
- no worn protective films
- no other residues

The surface has

- no smears or spots

### 5.1.2 Routine cleaning

Routine cleaning means cleaning work at defined intervals.

Aim/results:  
Different aim/results depending on the cleaning work concerned.

### 5.1.3 Shampooing

Cleaning of carpets with brushes using a suitable shampoo solution followed by removal of the dirty foam by vacuum action.

Aim/results:  
The surface has

- no attached dirt that penetrates into the pile
- no superficial dust or fluff

### 5.1.4 Spraying

A hand spray can or a spraying attachment on a floor cleaner is used to distribute the cleaning agent on to areas on the floor where there are stubborn stains and worn protective films. These areas are then polished by the cleaner using suitable cleaner pads.

Aim/results:  
The surface has

- no stubborn stains, rubber heel marks, scratches or drag marks

Areas with worn protective films are treated and made to match the surrounding surface. The appearance (polish) is uniform.

### 5.1.5 Polishing

Mechanical action with pads on floor coverings treated with care agents.  
Special polish effects depending on the type of care agent used.

Aim/results:  
The surface has

- no signs of use, heel marks, drink stains

The appearance of the care film is uniform.

## 5.2 Typical applications

### 5.2.1 PVC flooring

Application	Accessories	Cleaning agent	Comments
Thorough cleaning	(SPIN 43 and SPIN 43 DS only) brown pad	Alto Tornado	<ul style="list-style-type: none"> <li>PVC is sensitive to solvents.</li> <li>Strong acids can change the floor colour.</li> </ul>
Routine cleaning	Standard scrubbing brush	Alto Quick fresh	
Spraying	red pad		
Polishing	(SPIN 43 DS and SPIN 43 HS only) blue pad		

### 5.2.2 Elastomer flooring (rubber flooring)

Application	Accessories	Cleaning agent	Comments
Thorough cleaning	(SPIN 43 and SPIN 43 DS only) brown pad Std. scrubbing brush	Alto Tornado	
Routine cleaning	Std. scrubbing brush	Alto Quick fresh	
Spraying	red pad		

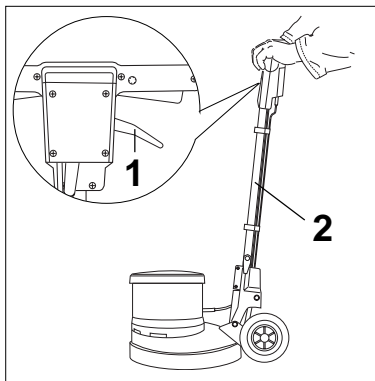
### 5.2.3 Linoleum

Application	Accessories	Cleaning agent	Comments
Thorough cleaning	(SPIN 43 and SPIN 43 DS only) blue pad	Alto Intensive	Linoleum is sensitive to <ul style="list-style-type: none"> <li>abrasive pads and cleaning agents</li> <li>strong alkalis (max. pH 9)</li> </ul> Do not use soft soap.
Routine cleaning	Std. scrubbing brush	Alto Quick fresh	
Spraying	red pad		
Polishing	blue pad		

These are just a few examples of applications. Every cleaning task is different. Please contact your Alto dealer for advice on the best solution for your cleaning task.

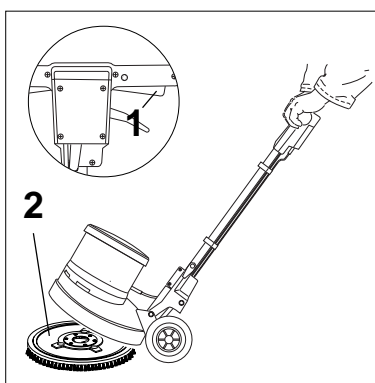
# 6 After cleaning

## 6.1 Putting the shaft upright



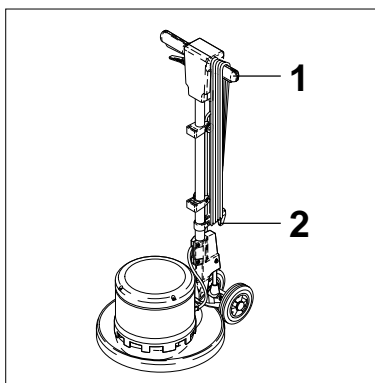
1. Pull the shaft adjustment lever (1) and move the shaft (2) to the upright position.

## 6.2 Removing accessories



1. Tip the cleaner on to its wheels and briefly operate the brush motor switch (1). The accessory (2) disengages.

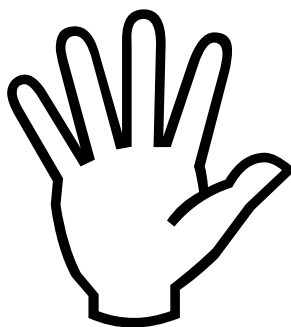
## 6.3 Rolling up the power cord



**Danger of tripping over power cord!**  
To prevent accidents, always roll up the power cord carefully.

1. Unplug the cleaner and roll the power cord around the handle (1) and the power cord hook (2) as shown in the illustration.

## 6.4 Storage



1. If the cleaner is not to be used, store it in a dry place with normal room conditions (not below 0°C).

# 7 Maintenance

## 7.1 Maintenance plan

	Every week	As required
Check power cord	●	
Clean cleaner, brush holder and accessories using a damp cloth		●

## 7.2 Maintenance work

Do the work described in the operating instructions only.

Before starting any work, unplug the cleaner.

Leave service and repair work, in particular repairs concerning electrical faults, to Alto customer service or authorized persons.

# 8 Troubleshooting

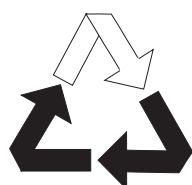
Fault	Cause	Remedy
≠ Brush motor does not start	> No power	<ul style="list-style-type: none"> <li>• Check power cord, electrical socket and fuse</li> </ul>
≠ Brush motor does not run fast enough	> Too much friction on the floor covering or the brush or pad do not fit the cleaner > Defective starting relay	<ul style="list-style-type: none"> <li>• Check combination of cleaning agent, floor covering and accessory</li> <li>• Contact Alto customer service</li> </ul>

# 9 Further information

## 9.1 Recycling the cleaner

Make the old cleaner unusable immediately.

of your local waste disposal site. Contact your local authorities or your nearest dealer for further information.



1. Unplug the cleaner and cut the power cord.

The cleaner contains valuable materials that should be recycled. Therefore, make use

## 9.2 Guarantee

Our general conditions of business are applicable with regard to the guarantee.

Subject to change as a result of technical advances.



## 9.3 Accessories

Description	Art.-No.	SPIN 43	SPIN 43 HS	SPIN 43 DS
Standard scrubbing brush, 0.6 PP	63239	x		x
Shampooing brush, 0.3 PP	63242	x		x
Abrasive grain brush	63238	x		x
Low-speed drive plate for pad	63240	x		x
High-speed drive plate for pad	63241		x	x
Cleaning agent tank	63237	x		x
Spray	63236	x	x	x
Pad, white	976052	x	x	x
Pad, red	976053	x	x	x
Pad, blue	976054	x	x	x
Pad, dark brown	976055	x		x
Pad, black	976158	x		x

### 9.4 Technical data

		SPIN 43	SPIN 43 HS	SPIN 43 DS
Voltage		230 V/ 50Hz	230 V/ 50Hz	230 V/ 50Hz
Fuse	A	10	16	16
Rated power	W	1200	1500	1200
Protective class/type		I /IP X4	I/IP X0	I/IP X4
Power cord H05VV-F 3G1,5	m	12.5	12.5	12.5
Brush speed	rpm	180	450	190/380
Brush diameter	mm	430	430	430
Dimensions LxWxH	mm	600 x 430 x 1200	600 x 430 x 1200	600 x 430 x 1200
Weight	kg	33	33	35,5
Working height	mm	330	330	330
Noise at a distance of 1 m (DIN 45635)	dB (A)	<70	<70	<70

### 9.5 EC conformity declaration

 <b>EC conformity declaration</b>	
ALTO Deutschland GmbH Guido-Oberdorfer-Straße 2-8 D-89287 Bellenberg	
<b>Product:</b>	Single-disc machine
<b>Model:</b>	SPIN 43, SPIN 43 HS, SPIN 43 DS
<b>Description:</b>	220/240V, 1-, 50 Hz IP X4 (SPIN 43/SPIN 43 DS) IP X0 (SPIN 43 HS)
<b>The design of the machine complies with the following regulations:</b>	EC machine regulations 98/37/EG EC low voltage regulations 73/23/EG EC EMC guidelines 89/336/EG
<b>Harmonized standards:</b>	EN 292-1, EN 292-2 EN 60335-1, EN 60335-2-67 EN 55014-1, EN 55014-2, EN 61000-3-2
<b>National standards and technical specifications:</b>	DIN EN 60335-1, EN 60335-2-67
 Dipl. Ing. Wolfgang Nieuwkamp Tests and Approvals	
Bellenberg, 01.04.2002	

**INTERNET**

<http://www.alto-online.com>

**ALTO HEADQUARTERS**

Incentive International A/S  
Kongens Nytorv 28  
P.O.Box 2064  
1013 Copenhagen K  
Tel.: +45 33 11 11 42  
Fax: +45 33 93 46 36  
E-mail: [incentive@incentive-dk.com](mailto:incentive@incentive-dk.com)

**SUBSIDIARIES****AUSTRALIA**

ALTO Overseas Inc.  
1B/8 Resolution Drive  
P.O.Box 797  
Caringbah, N.S.W. 2229  
Tel.: +61 2 95 24 61 22  
Fax: +61 2 95 24 52 56

**AUSTRIA**

ALTO Österreich GmbH  
Metzgerstr. 68  
5101 Bergheim/Salzburg  
Tel.: +43 6624 5 64 00-14  
Fax: +43 6624 5 64 00-55  
E-mail: [wap@salzburg.co.at](mailto:wap@salzburg.co.at)

**BRASIL**

Wap do Brasil Ltda.  
Rua 25 de Agosto, 608  
83323-260 Pinhais/Paraná  
Tel.: +55 4 16 67 40 26  
Fax: +55 4 16 67 47 99  
E-mail: [wap@wapltda.com.br](mailto:wap@wapltda.com.br)

**CANADA**

ALTO Canada  
24 Constellation Road  
Rexdale  
Ontario M9W 1K1  
Tel.: +1 41 66 75 58 30  
Fax: +1 41 66 75 69 89

**CROATIA**

Wap ALTO Strojevi za čišćenje, d.o.o.  
Siget 18a  
10020 Zagreb  
Tel.: +385 16 55 41 44  
Fax: +385 16 55 41 12

**CZECH REPUBLIC**

ALTO Česká Republika s.r.o.  
Zateckých 9  
14000 Praha 4  
Tel.: +420 2 41 40 84 19  
Fax: +420 2 41 40 84 39  
E-mail: [wap\\_p@mbox.vol.cz](mailto:wap_p@mbox.vol.cz)  
Web: [www.wap-alto.cz](http://www.wap-alto.cz)

**DENMARK**

ALTO Danmark A/S  
Industrivartheret  
9560 Hadsund  
Tel.: +45 72 18 21 00  
Fax: +45 72 18 21 05  
E-mail: [service@alto-dk.com](mailto:service@alto-dk.com)

ALTO Danmark A/S (food division)  
Blytækkervej 2  
9000 Aalborg  
Tel.: +45 72 18 21 00  
Fax: +45 72 18 20 99  
E-mail: [scanio.technology@alto-dk.com](mailto:scanio.technology@alto-dk.com)

**FRANCE**

ALTO France S.A.  
B.P. 44, 4 Place d'Ostwald  
67036 Strasbourg Cedex 2  
Tel.: +33 3 88 28 84 00  
Fax: +33 3 88 30 05 00  
E-mail: [info@alto-fr.com](mailto:info@alto-fr.com)

**GERMANY**

Wap ALTO Group  
ALTO Deutschland GmbH  
Guido-Oberdorfer-Straße 2-8  
89287 Bellenberg  
Tel.: +49 0180 5 37 37 37  
Fax: +49 0180 5 37 37 38  
E-mail: [info@wap-online.de](mailto:info@wap-online.de)

**GREAT BRITAIN**

ALTO Cleaning Systems  
(UK) Ltd.  
Bowerbank Way  
Gilwilly Industrial Estate, Penrith  
Cumbria CA11 9BN  
Tel.: +44 1 7 68 86 89 95  
Fax: +44 1 7 68 86 47 13  
E-mail: [sales@alto-uk.com](mailto:sales@alto-uk.com)

**HONG KONG**

ALTO Hong Kong  
RM 602, Tower B,  
Regent Ctr.  
70, Ta Chuen Ping Street  
Kwai Chung  
Hong Kong  
Tel.: +852 26 10 10 42  
Fax: +852 26 10 10 47  
E-mail: [waphk@netvigator.com](mailto:waphk@netvigator.com)

**JAPAN**

ALTO Danmark A/S Japan  
Representative Office  
Naruse-build 4F  
7-2 Shinbashi 1-Chome, Minato-Ku  
J-Tokyo 105-004  
Tel.: +81 3 35 69 38 07  
Fax: +81 3 35 69 38 08  
E-mail: [alto-jpn@nifty.com](mailto:alto-jpn@nifty.com)

**NETHERLANDS**

Wap ALTO Nederland B.V.  
Postbus 65  
3370 AB Hardinxveld-  
Giessendam  
Tel.: +31 18 46 67 72 00  
Fax: +31 18 46 67 72 01  
E-mail: [info@alto-nl.com](mailto:info@alto-nl.com)

**NORWAY**

ALTO Norge A/S  
Bjørnerudveien 24  
1266 Oslo  
Tel.: +47 22 75 17 70  
Fax: +47 22 75 17 71  
E-mail: [info@alto-no.com](mailto:info@alto-no.com)

**SINGAPORE**

ALTO DEN-SIN Singapore Pte Ltd.  
No. 17 Link Road  
Singapore 619034  
Tel.: +65 2 68 10 06  
Fax: +65 2 68 49 16  
E-mail: [densin@singnet.com.sg](mailto:densin@singnet.com.sg)  
Web: [www.densin.com](http://www.densin.com)

**SLOVENIA**

Wap čistilni sistemi, d.o.o.  
Letališka 33  
SLO-1110 Ljubljana  
Tel.: +368 15 24 23 06  
Fax: +368 15 40 42 94  
E-mail: [wap.prodaja@siol.com](mailto:wap.prodaja@siol.com)

**SLOWAKIA**

Wap čistiace systémy spol. s.r.o.  
Vajnorská 135  
83237 Bratislava  
Tel.: +421 7 44 25 96 64  
Fax: +421 7 44 25 79 44  
E-mail: [wap@gtinet.sk](mailto:wap@gtinet.sk)  
Web: [www.wap-alto.sk](http://www.wap-alto.sk)

**SPAIN**

ALTO Iberica S.L.  
Calle de la Majada No. 4  
28760 Tres Cantos - Madrid  
Tel.: +34 91 8 04 62 56  
Fax: +34 91 8 04 64 63  
E-mail: [info@alto-es.com](mailto:info@alto-es.com)

**SWEDEN**

ALTO Sverige AB  
Aminogatan 18  
S-431 04 Mölndal  
Tel.: +46 3 17 06 73 00  
Fax: +46 3 17 06 73 41  
E-mail: [info@alto-se.com](mailto:info@alto-se.com)

**SWITZERLAND**

ALTO Schweiz AG  
Allmendstr. 14  
5612 Villmergen  
Tel.: +41 56 618 85 00  
Fax: +41 56 618 85 10  
E-mail: [info@alto-ch.com](mailto:info@alto-ch.com)

**USA**

ALTO U.S.Inc  
16253 Swingley Ridge Road  
Suite 200  
Chesterfield, MO 63017-1544  
Tel.: +1 63 65 30 08 71  
Fax: +1 63 65 30 08 72  
E-mail: [info@alto-us.com](mailto:info@alto-us.com)

ALTO U.S.Inc  
2100 Highway 265  
Springdale, Arkansas 72764  
Tel.: +1 50 17 50 10 00  
Fax: +1 50 17 56 07 19  
E-mail: [info@alto-us.com](mailto:info@alto-us.com)

ALTO U.S.Inc  
1100 Haskins Road  
Bowling Green, Ohio 43402  
Tel.: +1 41 93 52 75 11  
Fax: +1 41 93 53 71 87  
E-mail: [info@alto-us.com](mailto:info@alto-us.com)