

# MD 8000



**Nilfisk  
ALTO**  
*Why Compromise*

## Operating Instructions

English

# Contents

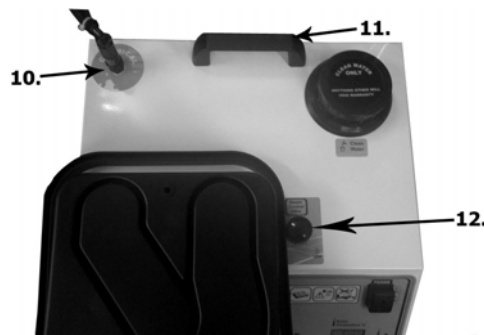
---

<b>Components</b>	Symbols used to mark instructions.....	4
<b>Attachments</b>	Included Attachments.....	5 & 6
<b>Guidance</b>	Congratulations.....	7
	Getting the best results.....	7
<b>Installation</b>	Assembly.....	8
	Warnings.....	8
<b>Operation</b>	Switching on the machine.....	9
	Using the machine.....	9 & 10
	During Use.....	10
<b>Maintenance</b>	Daily.....	11
	Weekly.....	11
<b>Precautions</b>	Do's & Don'ts.....	11
<b>Service</b>	Guarantee.....	12
<b>Technical</b>	Technical Data.....	13
<b>Troubleshooting</b>	Symptom, possible cause & action.....	14

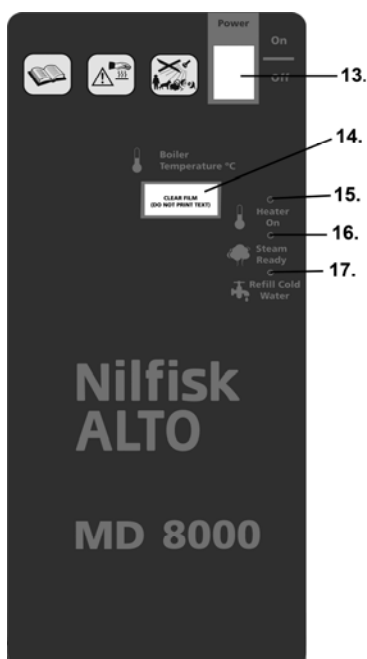
# Components

***Diagram A***

1. Collection Tank
2. Vacuum Hose Socket
3. Steam Hose Socket
4. Castor with Brake
5. Caster with No Brake
6. Serial Number
7. Cold Water Tank
8. Wire Basket
9. Tubular Handle
10. Chemical Connector
11. Carrying Handle
12. Steam Control Knob



***Diagram B***



13. On/Off Switch
14. Temperature Display LED
15. Heater On LED
16. Steam Ready LED
17. Cold Water Refill LED

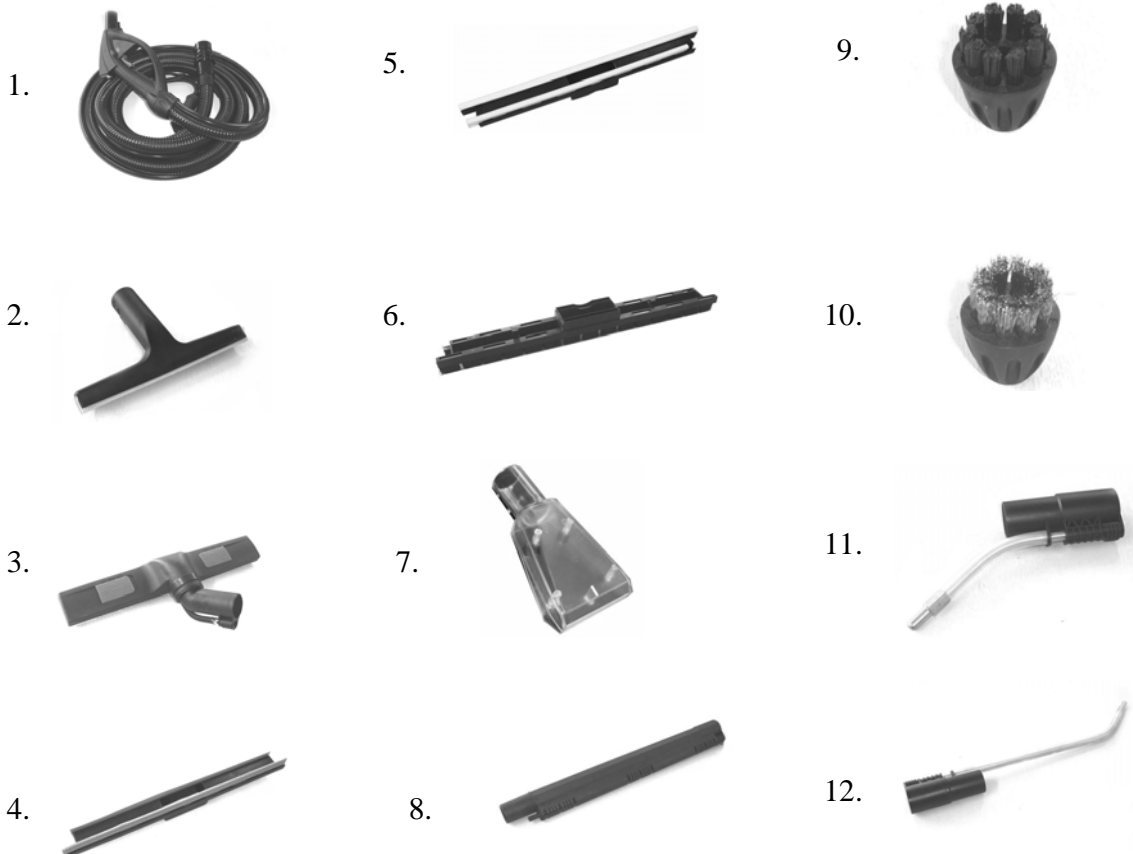
# Attachments

---

These Parts were carefully packed at Nilfisk ALTO. Please check all accessories on receipt. If any parts are missing or damaged please contact the company in which you purchased this machine, within 7 days of purchase quoting your serial number on the back of the machine.

- |   |                                     |
|---|-------------------------------------|
| 1. 4 Metre Steam, Detergent & Vacuum Hose | 2. Glass Washer                     |
| 3. Floor Nozzle 400mm                     | 4. Squeegee Insert for Floor Nozzle |
| 5. Carpet Insert for Floor Nozzle         | 6. Brush Insert for Floor Nozzle    |
| 7. Clear Upholstery Tool                  | 8. Extension Tubes x 2              |
| 9. Nylon Details Brush x 5                | 10. Brass Details Brush x 5         |
| 11. Short Steam Lance                     | 12. Long Steam Lance                |

***Diagram C***



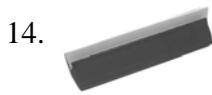
Also available is Stainless Steel detail brushes (Packs of 10)

# Attachments cont..

---

- 13. Suction Nozzle 150mm
- 15. Clip On Brush 150mm
- 17. Steam, Vacuum Nozzle (Small)
- 19. 95mm Triangular Brush
- 21. Ice Scraper

- 14. Clip on Squeegee 150mm
- 16. Accessory Service Kit
- 18. Short Steam Lance (Plastic)
- 20. Crevice Tool



## Diagram D

- Detergent Bottle



- Plastic Wing Nuts x 4



- Tubular Handle



- Wire Basket



# Guidance

---

## Congratulations

.....

We would like to take this opportunity to thank you for your purchase of the Nilfisk ALTO combined steam, detergent and vacuum cleaner.

### **The MD8000 is manufactured in the EU to the highest quality Standards**

This instruction manual contains all of the necessary information to operate and maintain this machine. Please read this instruction manual carefully before you start using or carrying out any maintenance on the machine.

If you use this machine correctly as stated in this instruction manual this machine will fulfil all your steam cleaning needs.

- This machine is intended for use in a commercial cleaning environment. If you do not follow the instructions contained in this manual, situations may arise which may be dangerous or harmful to the machine or the person operating the machine. Read this manual carefully so that you know when such situations can arise.
- Ensure that all operators of this machine are fully trained on how it works.
- Report any problems or damage to the machine immediately to the supplier or a Nilfisk ALTO approved supplier for this product. **Do not** operate the machine until the problem or damage has been resolved.

## Getting the Best Results

.....

- Operate the machine in accordance with the instruction manual
- Maintain the machine in accordance with instruction manual
- Use only parts supplied by Nilfisk ALTO approved distributors
- Use only detergents and cleaning products in the solution tank which have been approved by Nilfisk ALTO

**Keep this manual in a safe place for future reference and ordering of spare parts**

# Installation

---

- Place Tubular Handle (*Diagram D*) in position on the back of the machine and secure using the 4 x Plastic Wing Nuts (*Diagram D*).  
**!! Do not screw them all the way in at this point.**
- Place Wire Basket (*Diagram D*) over the Wing Nuts and tighten up to secure.
- Check all accessories are present in the box as shown in *Diagram C & D*.

## Warnings

.....

*This machine has been designed with your safety in mind, however it is important that you observe the following points for safe operation during the operating procedure*

- This is an electrical product – Do not use in wet weather or allow the machine to get wet.
- Do not discharge steam towards people, danger of scolding. Or towards equipment containing electrical components
- Never allow children to play with this appliance.
- Do not use the machine for other purposes that it was built for.
- Please remember that the steam cleaner operates at temperatures in excess of 150°C. Never use it on objects, which cannot resist the temperature (delicate materials, fabrics, plastics, wood etc). Where any doubt exists check carefully on a part of the material where minor marks will not matter.
- Do not operate the machine or carry out any maintenance out on it
  - Unless you are trained and authorised to do so
  - Unless you have read and thoroughly understand this instruction manual.



## Operating Procedure

.....

1. Fill the cold water tank (*Number 7 Diagram A*) with **clean cold** water only.  
**!! Anything other than clean cold water used in the water tank will void the manufacturers warranty.**
2. Connect the Detergent Bottle (*Diagram D*) to the detergent connection point (*Number 10 Diagram A*) on the machine.
3. Fill the detergent bottle (*Diagram D*) with Nilfisk approved detergent.  
**!! Unapproved detergent may be harmful or dangerous to the machine or the operator using the machine. This may cause irreparable damage to seals and will void the manufacturer's warranty**
4. Connect the Vacuum Hose to the front of the machine (*Number 2 Diagram A*) ensuring it locks into position. To release the vacuum hose from the socket slide the red button upwards at the same time as pulling the hose out.  
**!! If the Hose becomes damaged the complete hose must be replaced. Do not attempt this task yourself, contact a Nilfisk ALTO approved supplier for replacement.**
5. Connect the Steam Hose to the front of the machine (*Number 3 Diagram A*) ensuring it is pushed in all the way and the pin on the flap locks into the hole on the hose.  
**!! Grease "O" rings on steam pin before connecting.**  
**!! To release the steam hose, lift the flap and pull.**
6. Plug the power cable into a 240 Volt supply.  
**!! Inspect the electric cable before every use. If the cable becomes damaged at anytime the complete cable must be replaced by a Nilfisk ALTO approved distributor.**  
**!! Never touch the power cable or plug with wet hands**  
**!! Always unplug the machine when**
  - i. The machine is not in use
  - ii. Cleaning the machine
  - iii. Any maintenance work is being carried out
8. Switch the On/Off switch (*Number 13 Diagram B*) to the ON position. The Heater On light LED (*Number 15 Diagram B*) will illuminate.
9. Allow approximately 10 minutes for the boiler to heat the water
10. When the Steam Ready LED (*Number 16 Diagram B*) illuminates the machine is ready to be used.

## Operating Procedure cont....

.....

11. The handle controls are now active.

- The red trigger on the hose handle will release steam when pressed.
- The red button on the side of the handle will lock the steam trigger in the off position.
- Pressing the left hand switch on top of the handle will activate the vacuum.
- Pressing the right hand momentary switch located on the top of the handle will activate the detergent pump. Hold the switch as long as you need to dispense the detergent. Releasing the switch will stop the detergent supply.

12. The steam output can be adjusted by the steam control knob (*Number 12 Diagram A*)

13. Choose and fit the required accessory (*Diagram C*) to the hose handle. Lock the accessory in place by turning the accessory locking clip.

**!! When changing accessories during use please note these will be hot.**

## During Use

.....

### Cold Water Tank Empty(Number 7 Diagram A)

1. Refill the cold water tank when the refill cold water LED (*Number 17 Diagram B*) is illuminated. A buzzer will sound and the steam will no longer come out of the nozzle when the steam switch on the handle is pressed.
2. **Always empty the collection tank each time the cold-water tank is refilled.**
3. The pumps will not work when the cold-water tank is empty.
4. Once the cold water refill LED is illuminated the boiler heater will remain on for 30 minutes. If the cold-water tank is not refilled within 30 minutes and the machine is left powered on the boiler heater will switch off.

### Detergent Bottle Empty (Diagram D)

If the detergent does not come out of the nozzle when the detergent switch on the handle is pressed, refill the detergent bottle (*Diagram D*)

### Collection Tank Full (Number 1 Diagram A)

1. **Always empty the collection tank each time the cold-water tank is refilled**
2. The pitch of the motor noise changes and there is no suction at the nozzle
3. **Switch off the machine**, empty the collection tank and rinse clean

# Maintenance

---

**Warning:** Disconnect the machine from the mains before cleaning or carrying out any maintenance work.

## Daily Maintenance

.....

*To be carried out every day or every 8 hours of operation.*

1. Grease “O” rings on the steam pin in the steam hose.
2. Wash the hose by sucking one or two litres of water from a basin into the collection tank.
3. Empty the collection tank, rinse and wipe down.
4. Remove the foam filter, wash in water and re fit.
  - Take care not to damage the filter mesh. If it becomes torn do not use the machine and replace damaged parts immediately.
5. Rinse detergent bottle with clean water.
6. Wipe down the body of the machine with a clean damp cloth
7. Always wash the accessories in hot soapy water  
**DO NOT IMMERSE THE MACHINE OR HOSE IN WATER**
8. Wrap the power cable around the handle before storage.

## Weekly Maintenance

.....

*To be carried out every week or every 50 hours of operation.*

As for daily maintenance plus the following:

1. Inspect the power cable for any signs of damage. If damaged do not repair, contact the supplier of this product. Do not use until repaired.
2. Inspect the hose assembly for any signs of damage. If damaged do not repair, contact the supplier of this product. Do not use until repaired.
3. Inspect castors to ensure all securing bolts are fully tightened.

## Safety Precautions

.....

*This machine is to be used by trained operatives only*

### DO

- Check the cable and plug are safe and intact before plugging the machine in.
- Place cleaning in progress signs where necessary
- Point the steam nozzle away from your body during use
- Empty and clean machine after each use

### DON'T

- Use the machine near people, children or animals
- Point steam at electrical apparatus
- Use the machine to clean the machine down
- Do not use on Velvet, satin or leather
- Leave the machine unattended

# Service & Guarantee

---

## Service

.....

*If you require a service or advice on using or maintaining your machine please contact your Nilfisk ALTO approved distributor.*

## Guarantee

.....

Nilfisk ALTO guarantees that if within 12 months from the date of purchase this appliance, or any parts thereof, is proved to be defective by reason of faulty workmanship or materials, we will at our option repair or replace the same free of charge for labour and materials, provided that:

- The appliance has been installed and used in accordance with our operating and servicing instructions.
- If the appliance has been serviced, maintained, repaired, modified taken apart or tampered with by any person not authorised by us, then we will not be liable under this guarantee for any fault arising from their defective workmanship.
- We shall not be liable under this guarantee for any fault in the appliance arising from the use of spare parts not supplied and recommended by us.
- Excluded from this guarantee are parts that need replacement due to normal wear and tear such as hoses, nozzles and accessories.

# Technical

---

## Technical Information

.....

### **Boiler**

Wattage:	3000W – (2000 +1000)
Type:	Stainless Steel
Capacity:	3.3 Litres
Continuous Fill	Yes
Steam Pressure	8 Bar
Steam at source:	165°C >

### **Vacuum**

Type	Integral
Motor	850 Watt

### **Electrical**

Voltage	230V ~ single phase
Low Voltage Controls	5V
Cord length	10m

### **Capacities**

Boiler	3.3 Litres
Cold Water Tank	5 Litres (easy fill)
Detergent Tank	2.5 Litres (easy fill)
Collection Tank	12 Litres
Weight	25kg

# Trouble Shooting

---

<b>Symptom</b>	<b>Possible cause</b>	<b>Action</b>
No power	Not connected / Faulty socket	Check connection to wall socket and socket switch. Try in another wall socket
	On / Off switch not on	Press On / Off switch which will illuminate when on
	Fuse blown Unknown	Replace fuse with approved 13A fuse Call for service
No steam	Steam Control turned down fully clockwise	Turn the control to half way
	Steamer not ready	Wait for the "Ready to steam" light to illuminate
	Clean water tank is low (beeping sound & "refill" light is lit)	Pour water into the clean water tank until the beeper stops. The steam handle will work again.
	Unknown	Call for service
No steam, Just water	Steamer not ready	Wait for the "Ready to steam " light to illuminate
	Boiler at pressure and not heating (temperature less than 110°C)	Hold the steam switch on for approximately one minute, even if just water is coming out. This will result in the heater coming back on
	Unknown	Call for service
Steam Leaking from front socket	"O" Rings split	Change and re grease "O" Rings. To avoid this happening ensure "o" rings are greased before every use.
	"O" rings worn	Change and re grease "O" Rings. To avoid this happening ensure "o" rings are greased before every use.
Vacuum power low	High pitch motor noise	Switch the machine off and empty the collection tank.
	Unknown	Call for service
No detergent	Solution tank empty	Pour cleaning solution diluted in accordance with the manufacturer's instructions into the solution tank.



